



# EGD Grade 10

## Frame and Title Blocks

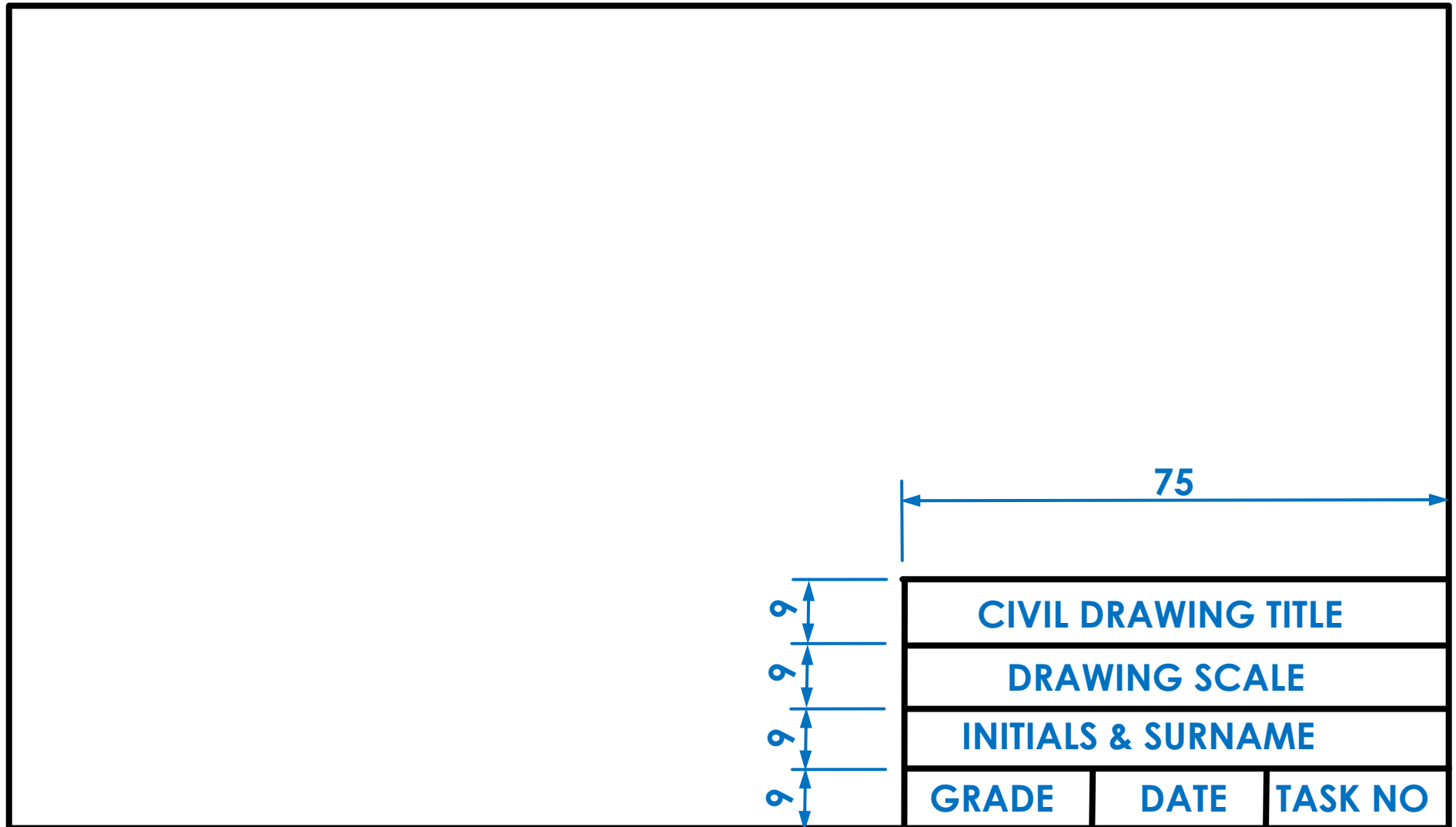
Developed by: PC Viljoen  
Senior Educational Specialist for  
Engineering Graphics and Design  
Free State Province



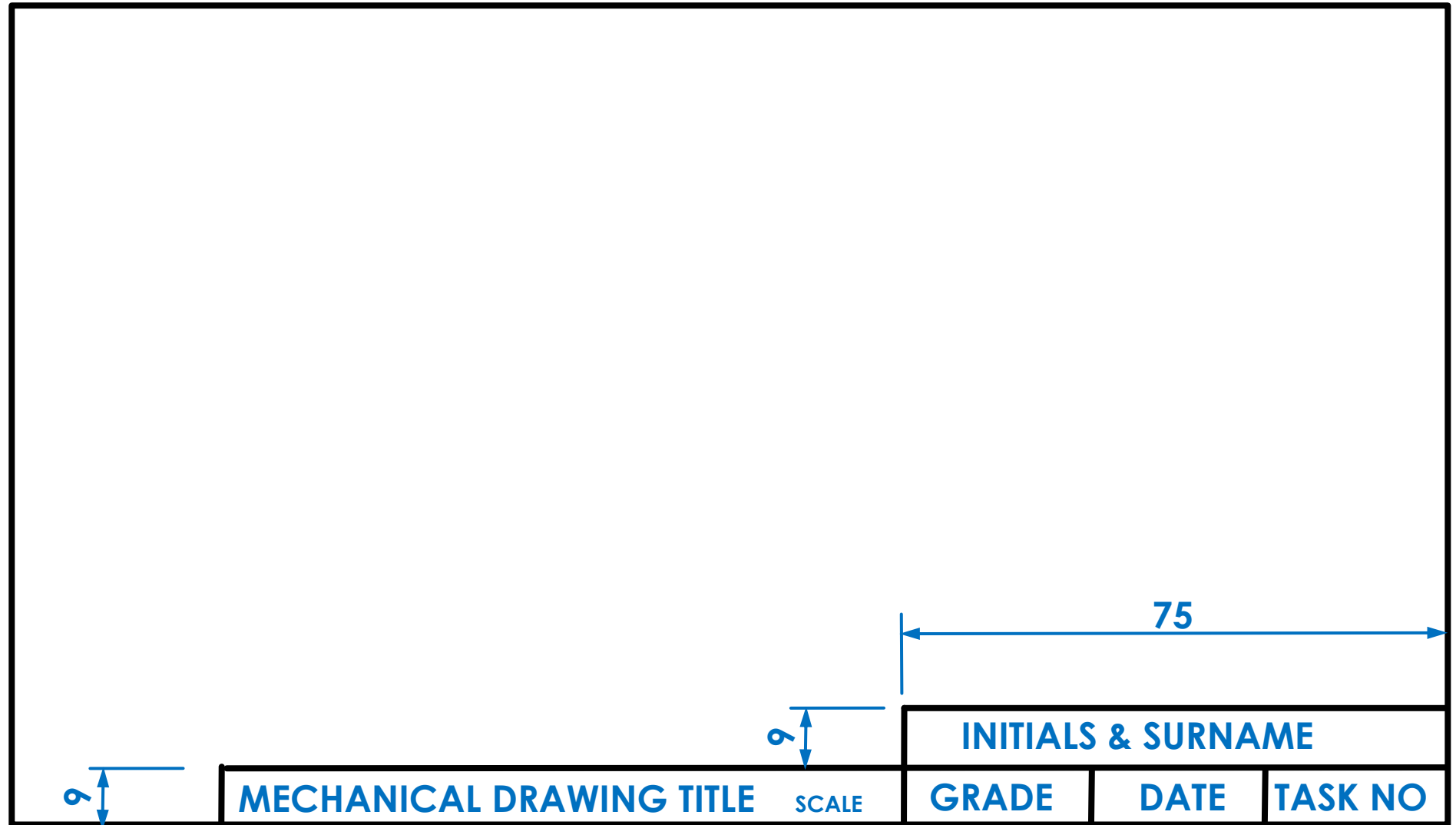
# Different name/title blocks

- There are two different name/title blocks namely...
  - Civil name/title blocks
  - Mechanical name/title blocks.

# Name/title block for civil drawings



# Name/title block for mechanical drawings



# Preparation of a name/title block

- ▶ How to prepare a civil or mechanical name/title block?

# Name/title block for civil drawings

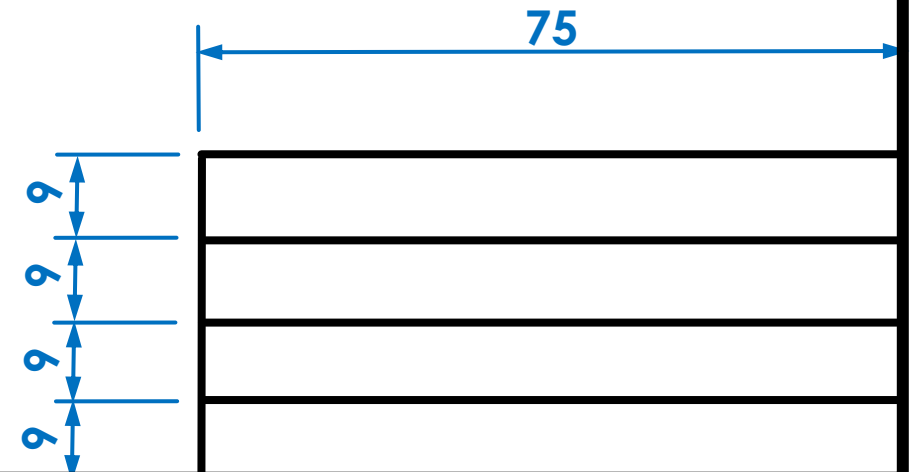
- Measure 15 mm from the sides of the drawing sheet

# Name/title block for civil drawings

- Join from corner to corner of your drawing sheet the four dots with each other with an A-type line.

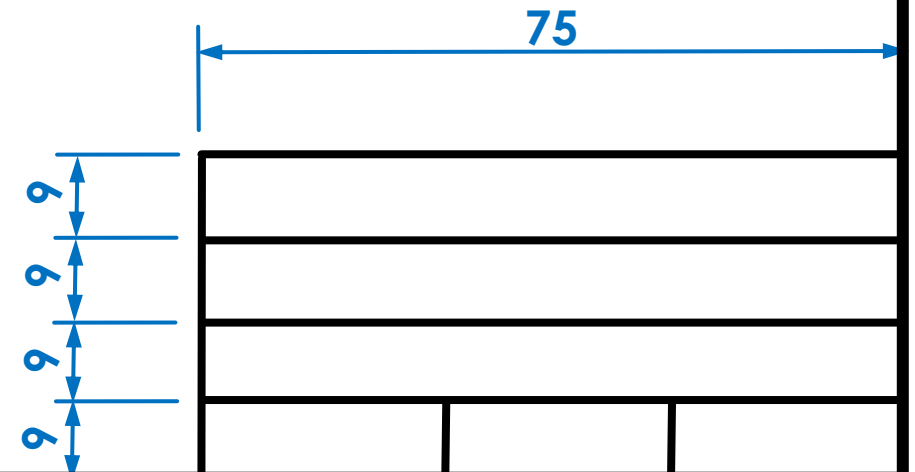
# Name/title block for civil drawings

- Draw 9 mm apart from each other, four 75 mm parallel A-type lines.



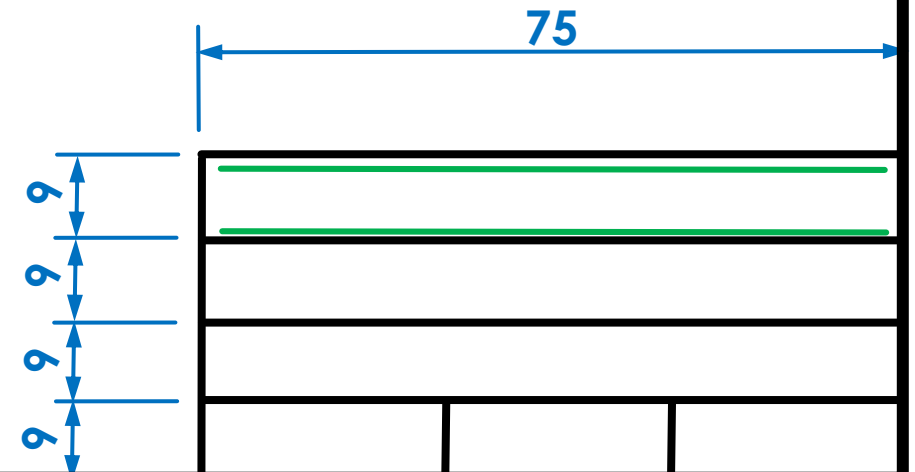
# Name/title block for civil drawings

- Divide the bottom row into three equal columns with parallel A-type lines.



# Name/title block for civil drawings

- ▶ In the top row, draw 7 mm C-type guide lines.



# Gothic Printing

- The style of lettering that is used in all disciplines of engineering drawings should be done according to the SANS Codes of Practice
  - **SANS 10111** for Engineering drawings
  - **SANS 10134** for building drawings

# Gothic Printing

A B C D E F G H I J K L

M N O P Q R S T U V W

X Y Z

0 1 2 3 4 5 6 7 8 9



# Gothic Printing

ALWAYS DRAW

GUIDELINES BEFORE

YOU START WITH

ANNOTATION



# Gothic Printing

ALWAYS USE UPPER

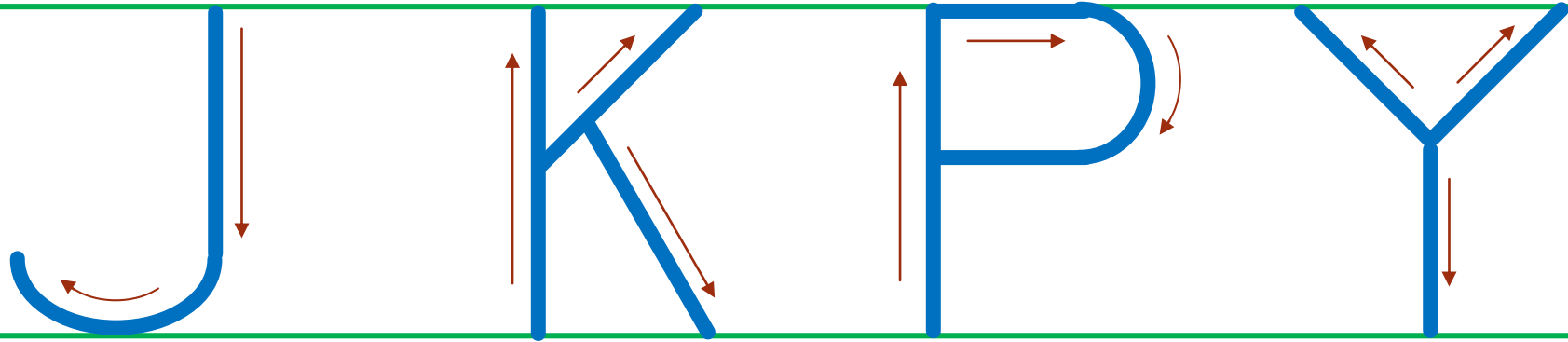
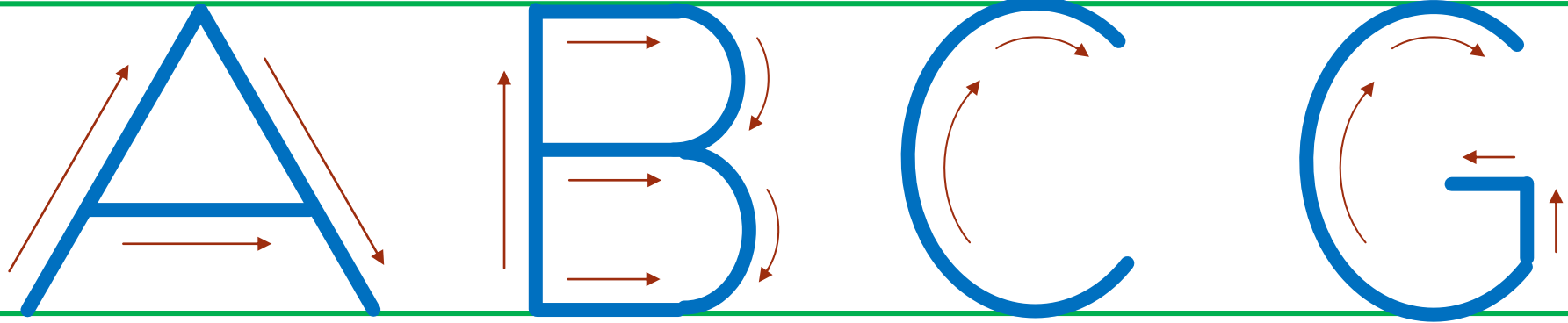
CASE ANNOTATION

UNLES OTHERWISE

STATED

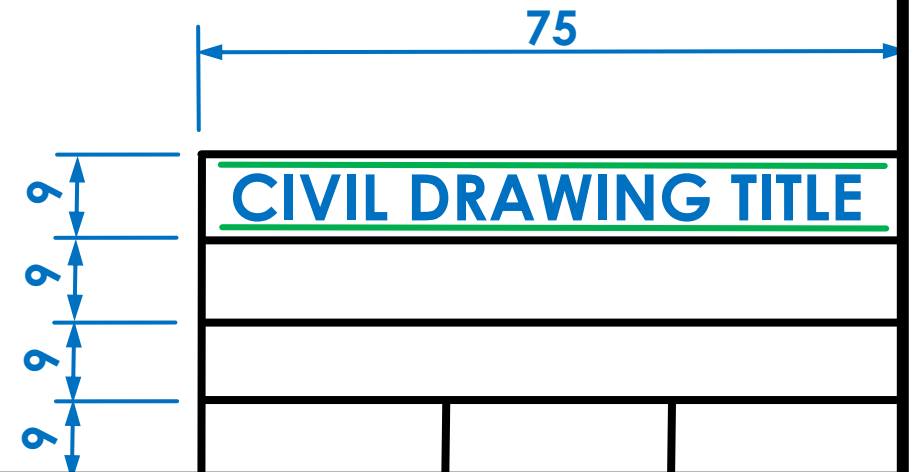


# Gothic Printing



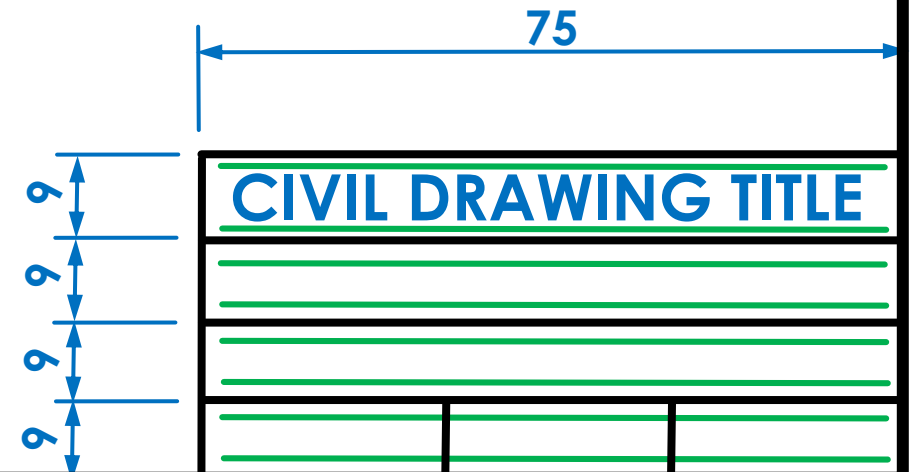
# Name/title block for civil drawings

- Between the 7 mm guide lines write CIVIL DRAWING TITLE.



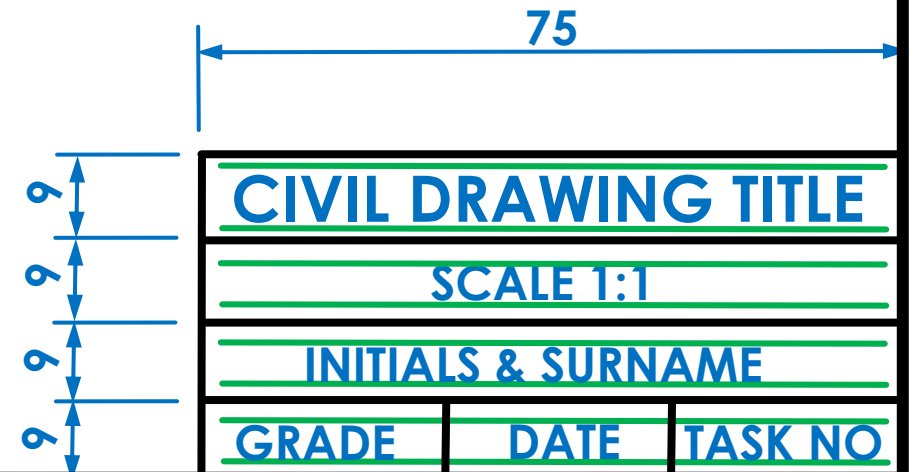
# Name/title block for civil drawings

- In the remaining three bottom rows, draw 4 mm C-type guide lines.



# Name/title block for civil drawings

- Between the 4 mm guide lines draw the
  - SCALE 1:1,
  - YOUR INITIALS AND SURNAME,
  - GRADE,
  - DATE AND
  - TASK NUMBER.



# Relevant line types

➤ With your knowledge of the different line types

➤ A-type lines



➤ B-type lines



➤ C-type lines



draw the following

# Gothic Printing



Task 1.1

- Set up an A4 drawing sheet with a border and a title block.
- Draw two guide lines, 7 mm apart from each other as well as two guide lines, 4 mm apart from each other.
- **Question:** Draw the alphabet as well as numbers 0 – 9 between the 7mm and 4 mm guide lines.
- Show all guide lines as soft construction lines.



# Gothic Printing

Task 1.1

A B C D E F G H I J K L M N O P Q R S  
T U V W X Y Z

0 1 2 3 4 5 6 7 8 9

A B C D E F G H I J K L M N O P Q R S T U V W X Y Z

0 1 2 3 4 5 6 7 8 9

GOTHIC PRINTING

INITIALS & SURNAME

GRADE

DATE

TASK 1,1