

QUESTION 2.1: SOLID GEOMETRY

Given:

- The front view of a equilateral square prism.
- The base side length of the equilateral square prism is 35 mm.

Instructions:

Draw to a scale of 1 : 1, the following views of the solid:

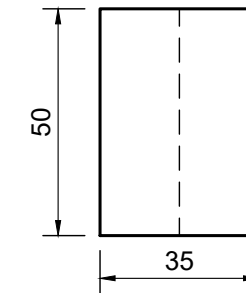
- 2.1 The given front view
- 2.2 The top view
- 2.3 The right view

Note:

- Planning is essential.
- Show all construction lines.
- Show all hidden detail.

ASSESSMENT CRITERIA

1	TOP VIEW	6		
2	FRONT VIEW	5		
3	RIGHT VIEW	5		
PENALTIES (-1)				
TOTAL		16		



QUESTION 2.2: SOLID GEOMETRY

Given:

- The front view of a equilateral triangular prism.
- The base side length of the equilateral triangular prism is 35 mm.

Instructions:

Draw to a scale of 1 : 1, the following views of the solid:

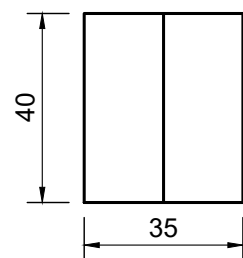
- 2.1 The given front view
- 2.2 The top view
- 2.3 The right view

Note:

- Planning is essential.
- Show all construction lines.
- Show all hidden detail.

ASSESSMENT CRITERIA

1	TOP VIEW	5		
2	FRONT VIEW	5		
3	RIGHT VIEW	5		
PENALTIES (-1)				
TOTAL		15		



QUESTION 2.1: SOLID GEOMETRY

Given:

- The front view of a equilateral triangular prism.
- The base side length of the equilateral triangular prism is 35 mm.

Instructions:

Draw to a scale of 1 : 1, the following views of the solid:

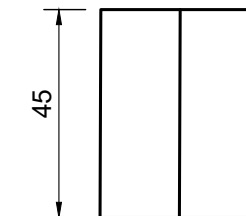
- 2.1 The given front view
- 2.2 The top view
- 2.3 The left view

Note:

- Planning is essential.
- Show all construction lines.
- Show all hidden detail.

ASSESSMENT CRITERIA

1	TOP VIEW	5		
2	FRONT VIEW	5		
3	LEFT VIEW	5		
PENALTIES (-1)				
TOTAL		15		



QUESTION 2.2: SOLID GEOMETRY

Given:

- The front view of a equilateral square prism.
- The base side length of the equilateral square prism is 25 mm.

Instructions:

Draw to a scale of 1 : 1, the following views of the solid:

- 2.1 The given front view
- 2.2 The top view
- 2.3 The left view

Note:

- Planning is essential.
- Show all construction lines.
- Show all hidden detail.

ASSESSMENT CRITERIA

1	TOP VIEW	7		
2	FRONT VIEW	5		
3	LEFT VIEW	5		
PENALTIES (-1)				
TOTAL		17		

