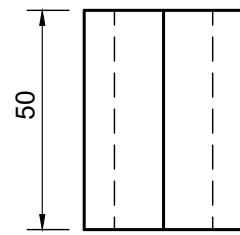


QUESTION 2.1: SOLID GEOMETRY



Given:

- The front view of an equilateral pentagonal prism.
- The base side length of the equilateral pentagonal prism is 21 mm.

Instructions:

Draw to a scale of 1 : 1, the following views of the solid:

- 2.1 The given front view
- 2.2 The top view
- 2.3 The left view

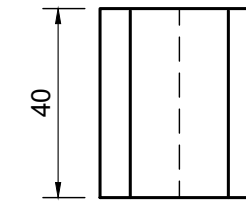
Note:

- Planning is essential.
- Show all construction lines.
- Show all hidden detail.

ASSESSMENT CRITERIA

| | | | | |
|----------------|------------|-----------|--|--|
| 1 | TOP VIEW | 10 | | |
| 2 | FRONT VIEW | 7 | | |
| 3 | LEFT VIEW | 6 | | |
| PENALTIES (-1) | | | | |
| TOTAL | | 23 | | |

QUESTION 2.2: SOLID GEOMETRY



Given:

- The front view of an equilateral pentagonal prism.
- The base side length of the equilateral pentagonal prism is 21 mm.

Instructions:

Draw to a scale of 1 : 1, the following views of the solid:

- 2.1 The given front view
- 2.2 The top view
- 2.3 The left view

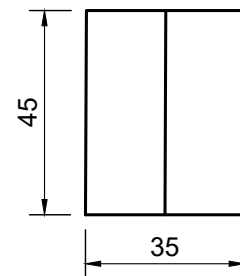
Note:

- Planning is essential.
- Show all construction lines.
- Show all hidden detail.

ASSESSMENT CRITERIA

| | | | | |
|----------------|------------|-----------|--|--|
| 1 | TOP VIEW | 10 | | |
| 2 | FRONT VIEW | 7 | | |
| 3 | LEFT VIEW | 6 | | |
| PENALTIES (-1) | | | | |
| TOTAL | | 23 | | |

QUESTION 2.3: SOLID GEOMETRY



Given:

- The front view of a equilateral hexagonal prism.
- The across distance at the base, from side to side of the equilateral hexagonal prism is 35 mm.

Instructions:

Draw to a scale of 1 : 1, the following views of the solid:

- 2.1 The given front view
- 2.2 The top view
- 2.3 The right view

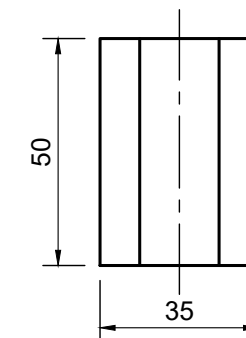
Note:

- Planning is essential.
- Show all construction lines.
- Show all hidden detail.

ASSESSMENT CRITERIA

| | | | | |
|----------------|------------|-----------|--|--|
| 1 | TOP VIEW | 11 | | |
| 2 | FRONT VIEW | 5 | | |
| 3 | RIGHT VIEW | 7 | | |
| PENALTIES (-1) | | | | |
| TOTAL | | 23 | | |

QUESTION 2.4: SOLID GEOMETRY



Given:

- The front view of a equilateral hexagonal prism.
- The distance at the base, from corner to corner of the equilateral hexagonal prism is 35 mm.

Instructions:

Draw to a scale of 1 : 1, the following views of the solid:

- 2.1 The given front view
- 2.2 The top view
- 2.3 The right view

Note:

- Planning is essential.
- Show all construction lines.
- Show all hidden detail.

ASSESSMENT CRITERIA

| | | | | |
|----------------|------------|-----------|--|--|
| 1 | TOP VIEW | 9 | | |
| 2 | FRONT VIEW | 7 | | |
| 3 | RIGHT VIEW | 5 | | |
| PENALTIES (-1) | | | | |
| TOTAL | | 21 | | |

