

QUESTION 2.1: SOLID GEOMETRY

Given:

- The front view of an equilateral pentagonal prism.
- The base side length of the equilateral pentagonal prism is 22 mm.

Instructions:

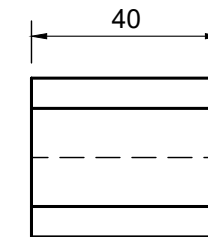
Draw to a scale of 1 : 1, the following views of the solid:

- 2.1 The given front view
- 2.2 The top view
- 2.3 The right view

Note:

- Planning is essential.
- Show all construction lines.
- Show all hidden detail.

ASSESSMENT CRITERIA			
1	RIGHT VIEW	10	
2	FRONT VIEW	7	
3	TOP VIEW	6	
PENALTIES (-1)			
TOTAL		23	



QUESTION 2.2: SOLID GEOMETRY

Given:

- The front view of an equilateral pentagonal prism.
- The base side length of the equilateral pentagonal prism is 25 mm.

Instructions:

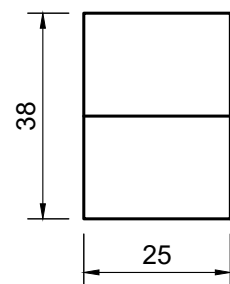
Draw to a scale of 1 : 1, the following views of the solid:

- 2.1 The given front view
- 2.2 The top view
- 2.3 The right view

Note:

- Planning is essential.
- Show all construction lines.
- Show all hidden detail.

ASSESSMENT CRITERIA			
1	RIGHT VIEW	10	
2	FRONT VIEW	7	
3	TOP VIEW	6	
PENALTIES (-1)			
TOTAL		23	



QUESTION 2.3: SOLID GEOMETRY

Given:

- The front view of a equilateral hexagonal prism.
- The across distance at the base, from side to side of the equilateral hexagonal prism is 38 mm.

Instructions:

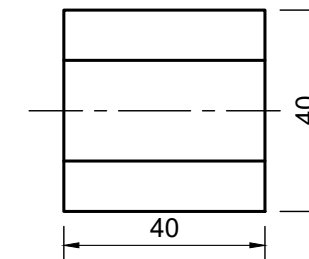
Draw to a scale of 1 : 1, the following views of the solid:

- 2.1 The given front view
- 2.2 The top view
- 2.3 The right view

Note:

- Planning is essential.
- Show all construction lines.
- Show all hidden detail.

ASSESSMENT CRITERIA			
1	RIGHT VIEW	11	
2	FRONT VIEW	5	
3	TOP VIEW	7	
PENALTIES (-1)			
TOTAL		23	



QUESTION 2.4: SOLID GEOMETRY

Given:

- The front view of a equilateral hexagonal prism.
- The distance at the base, from corner to corner of the equilateral hexagonal prism is 40 mm.

Instructions:

Draw to a scale of 1 : 1, the following views of the solid:

- 2.1 The given front view
- 2.2 The top view
- 2.3 The left view

Note:

- Planning is essential.
- Show all construction lines.
- Show all hidden detail.

ASSESSMENT CRITERIA			
1	TOP VIEW	10	
2	FRONT VIEW	7	
3	LEFT VIEW	5	
PENALTIES (-1)			
TOTAL		22	



SOLID GEOMETRY

ESTIMATED TIME FOR COMPLETION	30 MIN
YOUR TIME OF COMPLETION	MIN

GRADE
10

NAME &
SURNAME

TASK
7.4

PAGE
2.4