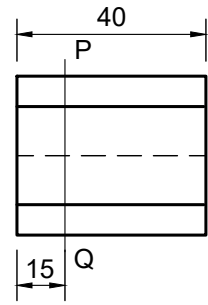


QUESTION 2: SOLID GEOMETRY



Given:

- The front view of an equilateral pentagonal prism with cutting plane PQ.
- The base side length of the equilateral pentagonal prism is 35 mm.

Instructions:

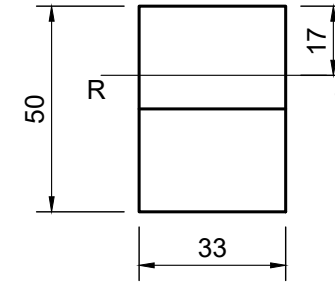
Draw to a scale of 1 : 1, the following views of the solid:

- 2.1 The given front view
- 2.2 The top view
- 2.3 A sectioned left view

Note:

- Planning is essential.
- Show all construction lines.
- Show all hidden detail.

QUESTION 2: SOLID GEOMETRY



Given:

- The front view of a equilateral hexagonal prism with cutting plane RS.
- The across distance at the base, from side to side of the equilateral hexagonal prism is 50 mm.

Instructions:

Draw to a scale of 1 : 1, the following views of the solid:

- 2.1 The given front view
- 2.2 A sectioned top view
- 2.3 The right view

Note:

- Planning is essential.
- Show all construction lines.
- Show all hidden detail.

| ASSESSMENT CRITERIA | | | |
|---------------------|---------------------|-----------|--|
| 1 | SECTIONAL LEFT VIEW | 9 | |
| 2 | FRONT VIEW | 8 | |
| 3 | TOP VIEW | 6 | |
| PENALTIES (-1) | | | |
| TOTAL | | 23 | |

| ASSESSMENT CRITERIA | | | |
|---------------------|--------------------|-----------|--|
| 1 | RIGHT VIEW | 8 | |
| 2 | FRONT VIEW | 5 | |
| 3 | SECTIONED TOP VIEW | 11 | |
| PENALTIES (-1) | | | |
| TOTAL | | 24 | |



| | | | | | | |
|----------------|-------------------------------|--------|--------------------|-------------------|--------------|--------------|
| SOLID GEOMETRY | ESTIMATED TIME FOR COMPLETION | 30 MIN | GRADE 10 | NAME & SURNAME | TASK 7.18 | PAGE 2.18 |
| | YOUR TIME OF COMPLETION | MIN | | | | |