

**QUESTION 2.1: SOLID GEOMETRY**

**Given:**

- The front view of a cylinder.
- The diameter of the cylinder is 60 mm (Ø60) and the height is 50 mm.

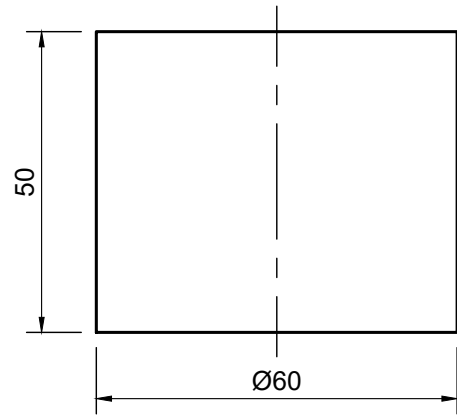
**Instructions:**

Draw to a scale of 1 : 1, the following views of the solid:

- 2.1 The given front view
- 2.2 The top view
- 2.3 The right view

**Note:**

- Planning is essential.



**QUESTION 2: SOLID GEOMETRY**

**Given:**

- The front view of a cylinder.
- The diameter of the cylinder is 50 mm (Ø50) and the width is 70 mm.

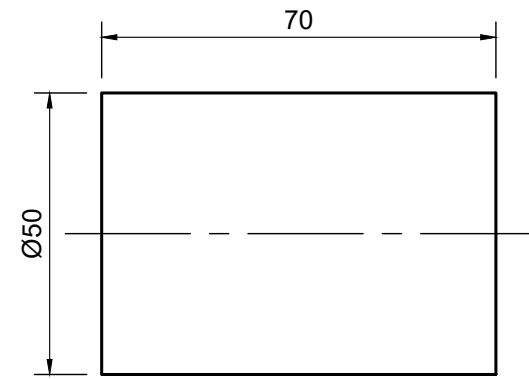
**Instructions:**

Draw to a scale of 1 : 1, the following views of the solid:

- 2.1 The given front view
- 2.2 The top view
- 2.3 The left view

**Note:**

- Planning is essential.



ASSESSMENT CRITERIA			
1	TOP VIEW	5	
2	FRONT VIEW	5	
3	RIGHT VIEW	5	
PENALTIES (-1)			
<b>TOTAL</b>		15	

ASSESSMENT CRITERIA			
1	LEFT VIEW	5	
2	FRONT VIEW	5	
3	TOP VIEW	5	
PENALTIES (-1)			
<b>TOTAL</b>		15	



SOLID GEOMETRY	ESTIMATED TIME FOR COMPLETION	30 MIN	GRADE	NAME & SURNAME	TASK	PAGE
	YOUR TIME OF COMPLETION	MIN	10			
					8.1	2.26