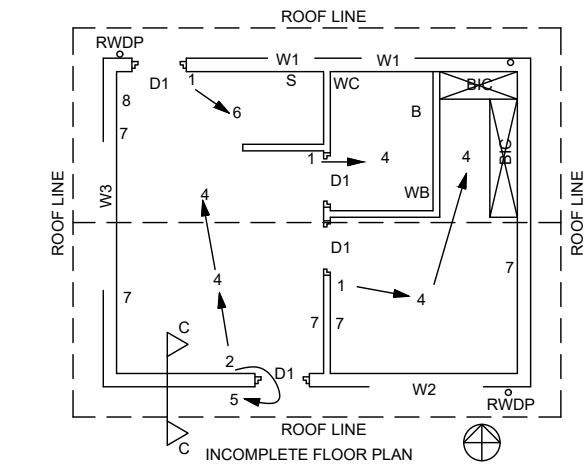


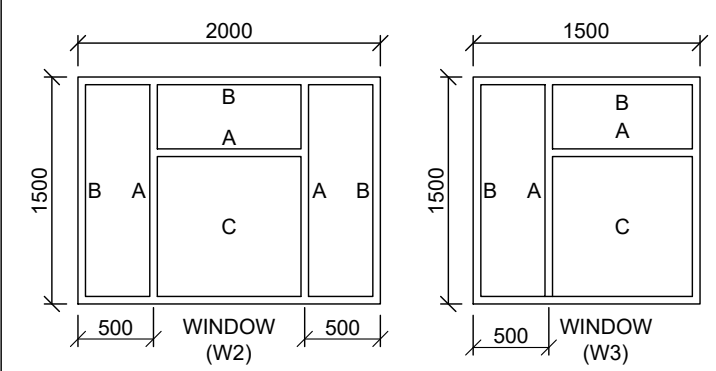
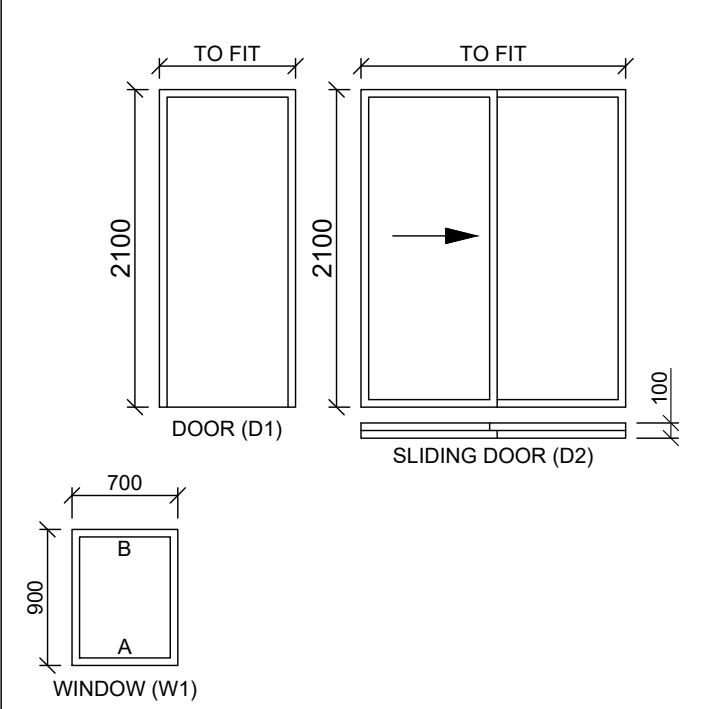
ROOM DESIGNATIONS AND FLOOR FINISHING
 ROOM 1: BEDROOM CARPET
 ROOM 2: BATHROOM TILES
 ROOM 3: KITCHEN TILES
 ROOM 4: LOUNGE WOOD



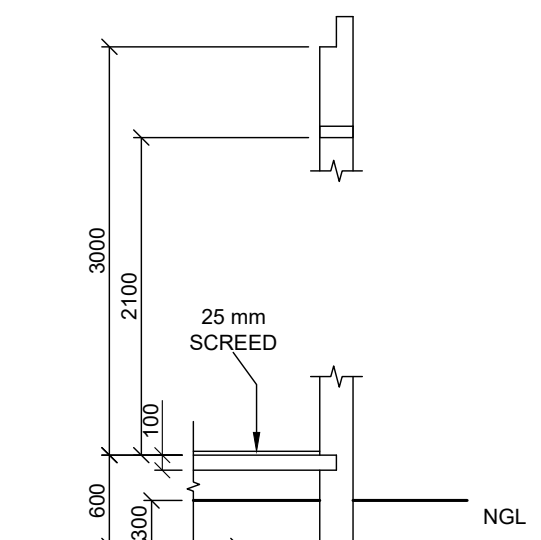
| ELECTRICAL SYMBOLS | | |
|--------------------|--------|-----------------------------|
| NUMBER | SYMBOL | DESCRIPTION |
| 1 | | SINGLE POLE SWITCH |
| 2 | | DOUBLE POLE SWITCH |
| 3 | | TRIPLE POLE SWITCH |
| 4 | | CEILING MOUNTED LIGHT |
| 5 | | WALL MOUNTED LIGHT |
| 6 | | 2 X 40 W FLUORESCENT LIGHTS |
| 7 | | SWITCH SOCKET OUTLET |
| 8 | | DISTRIBUTION BOARD |

NOTE: REPLACE EACH NUMBER ON THE FLOOR PLAN WITH THE CORRESPONDING SYMBOL AS INDICATED AT THE END POINTS OF THE FREEHAND LINE REPRESENTING THE POWER CABLE JOINING THE DIFFERENT COMPONENTS WITH EACH OTHER

DOOR AND WINDOW SCHEDULE

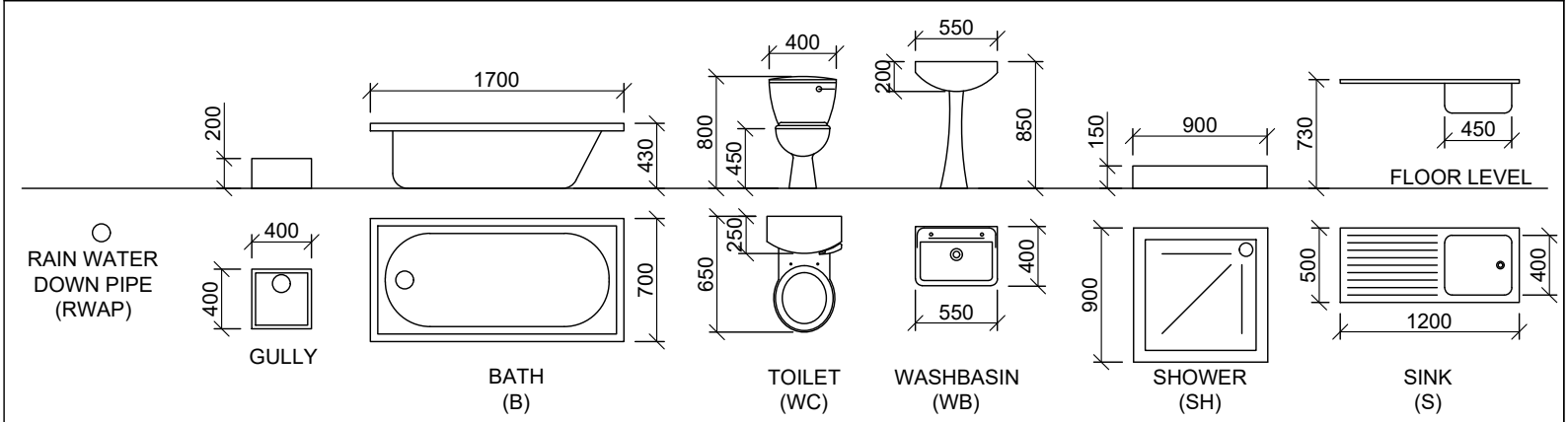


- DOOR AND WINDOW NOTES:**
- A = OPENING SIDE
 - B = HINGED SIDE
 - C = FIXED PANEL
 - 150 x 20 mm FIBRE CEMENT SILL (30°) UNDER ALL WINDOWS
 - 200 x 75 mm LINTEL ABOVE ALL DOOR & WINDOW OPENINGS
 - ALL LINTELS ARE AT THE SAME HEIGHT
 - ALL FRAMES 50mm THICK



LOAD BEARING WALLS = 200mm
 NON LOAD BEARING WALLS = 110mm

FIXTURES



QUESTION 4: CIVIL DRAWING

- Given:**
- The incomplete floor plan showing the walls, position of the doors, windows, fixtures and electrical layout
 - The incomplete south elevation showing the walls, window openings and roof
 - The incomplete foundation and external wall detail
 - Room designations and floor finishes
 - A door and window schedule
 - A table of electrical features
 - A table of features and fixtures
 - The incomplete floor plan and south elevation of the new house, drawn to scale 1 : 50 and the incomplete foundation, roof detail and break line of the detailed section view, drawn to scale 1 : 20 on page 4.2

Instructions:
 Answer this question on page 4.2.
 4.1 Use the given incomplete floor plan, incomplete elevation view and incomplete section view and draw, in first-angle orthographic projection and to a **required scale**, the following views of the new house:

- 4.1.1 THE COMPLETE FLOOR PLAN.**
Add the following features to the drawing:
- ALL doors and windows
 - ALL hatching detail.

- 4.1.2 THE COMPLETE SOUTH ELEVATION.**
Show the following features on the drawing:
- The outside walls, door detail and window detail
 - The natural ground level and finished floor level

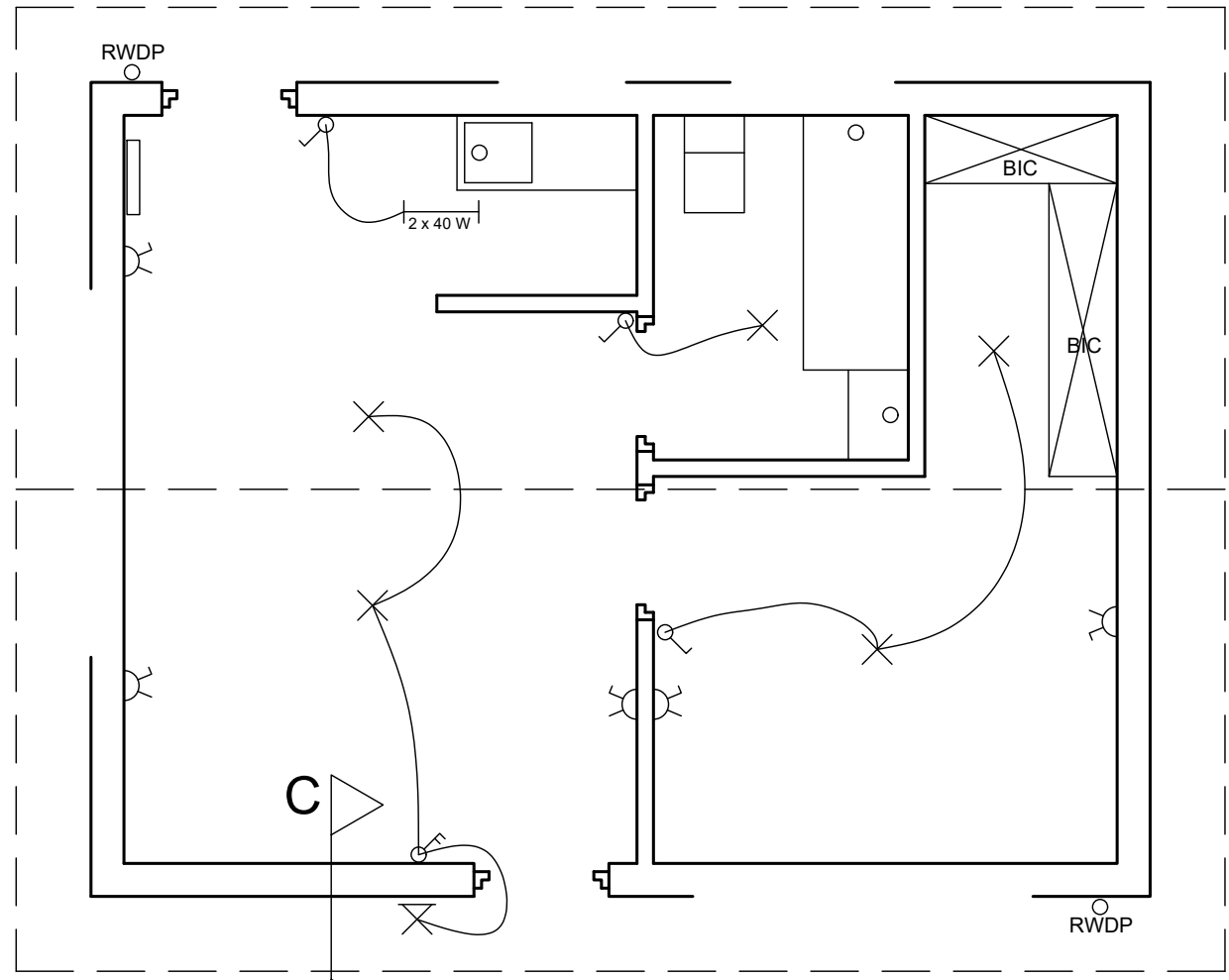
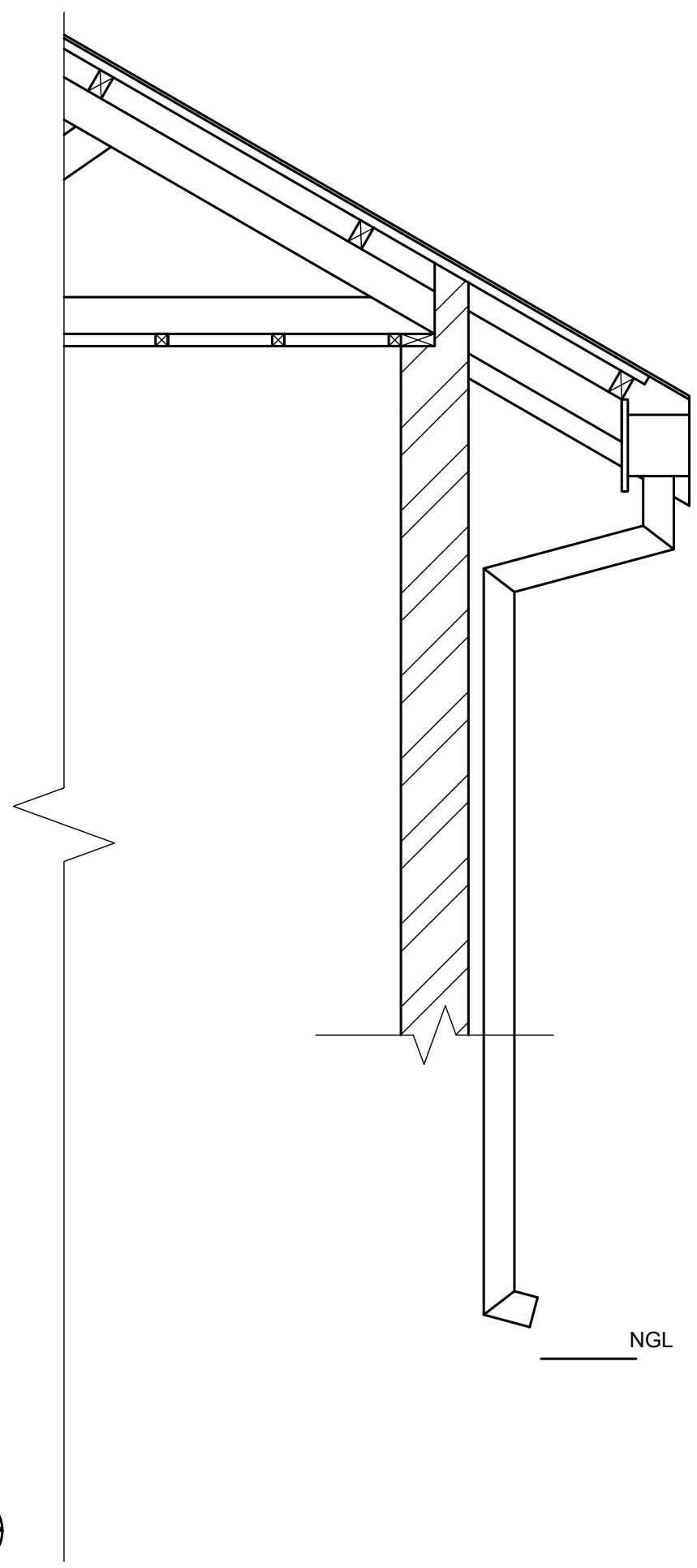
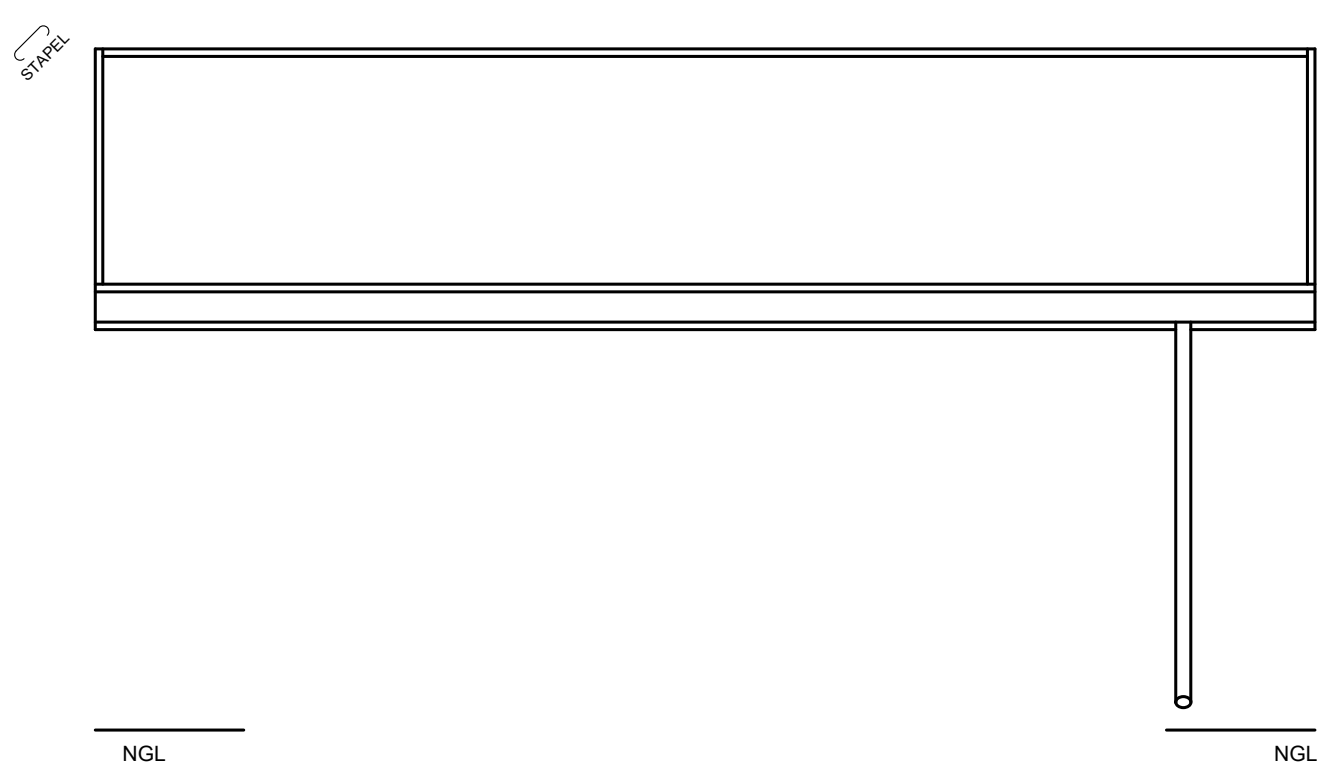
- 4.2** Use the incomplete wall detail and break line on page 73 and draw, to scale 1 : 20, a detailed section view on cutting plane C-C of the area in the ellipse shown on the incomplete floor plan.
 Show the following features on the drawing:
- The complete detail of the foundation and wall
 - ALL hatching detail. Only the substructure hatching may be drawn in neat free hand

- Label the following:**
- The appropriate title and scale of each view
 - The room designations and floor finishes
 - Ground level, finished floor level and damp prove coarse as abbreviations on all relevant views

NOTE:
 - ALL drawings must comply with the guidelines and graphical symbols as contained in the *SANS 10143*.
 [44]



| | | | | | | |
|-------|-------------------------------|--------|----------|--------------------|------|------|
| CIVIL | ESTIMATED TIME FOR COMPLETION | 40 MIN | GRADE 10 | INITIALS & SURNAME | TASK | PAGE |
| | YOUR TIME FOR COMPLETION | MIN | | | 11.1 | 5.4 |



| PENALIZING FOR OFFICE USE ONLY | |
|--------------------------------|----|
| INCORRECT SCALE(S) USED | -2 |
| NON-ALIGNMENT OF VIEWS | -2 |
| VIEW(S) ROTATED | -2 |
| SECTION VIEWED INCORRECTLY | -2 |
| INCORRECT LETTERING | -1 |
| TOTAL | |

| ASSESSMENT CRITERIA | | | |
|---------------------|--------------------------|-------------|--|
| FLOOR PLAN | | | |
| 1 | DOORS + WINDOWS | 13 | |
| 2 | HATCHING | 4 | |
| 3 | LABELS | 5 | |
| SUB TOTAL 1 | | 22 | |
| SOUTH ELEVATION | | | |
| 1 | WALLS + FFL + NGL | 2 | |
| 2 | DOOR + WINDOW | 7.5 | |
| 3 | LABELS | 1 | |
| SUB TOTAL 2 | | 10.5 | |
| DETAILED SECTION | | | |
| 1 | FOUNDATION + WALL + SLAB | 6.5 | |
| 2 | HATCHING | 3 | |
| 3 | LABELS | 2 | |
| SUB TOTAL 3 | | 11.5 | |
| TOTAL | | 44 | |
| TOTAL PENALTIES (-) | | | |
| GRAND TOTAL | | | |



| | | | | | | | |
|---------------------------|-------------------------------|--------|--------------------|--------------------|--|-------------|------------|
| CIVIL WORK DRAWING | ESTIMATED TIME FOR COMPLETION | 40 MIN | GRADE 10 | INITIALS & SURNAME | | TASK | PAGE |
| | YOUR TIME FOR COMPLETION | MIN | | | | 11.1 | 5.5 |