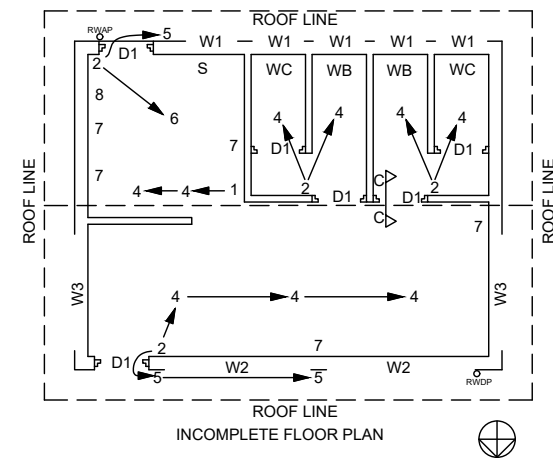
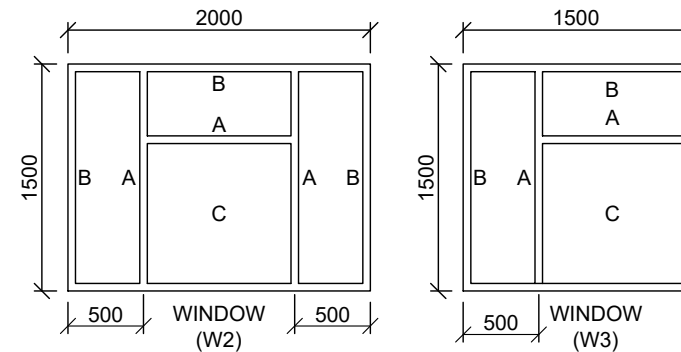
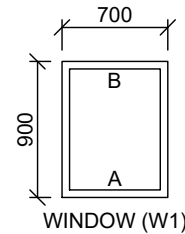
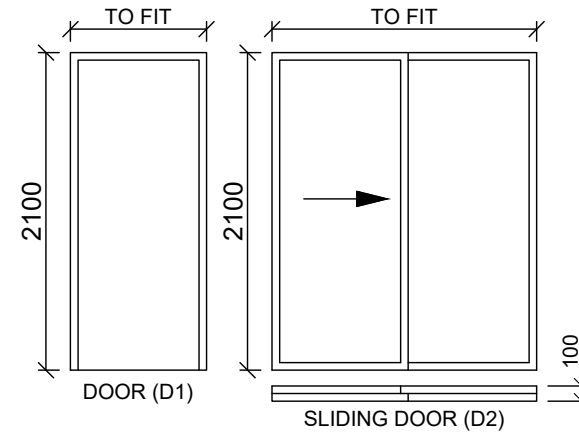


ROOM DESIGNATIONS & FLOOR FINISHING

ROOM 1: RESTAURANT	TILES
ROOM 2: KITCHEN	TILES
ROOM 3: MALE TOILET	TILES
ROOM 4: FEMALE TOILET	TILES



DOOR AND WINDOW SCHEDULE



DOOR AND WINDOW NOTES:

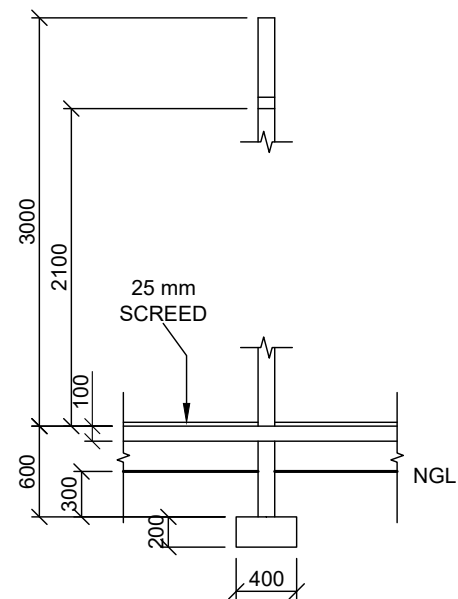
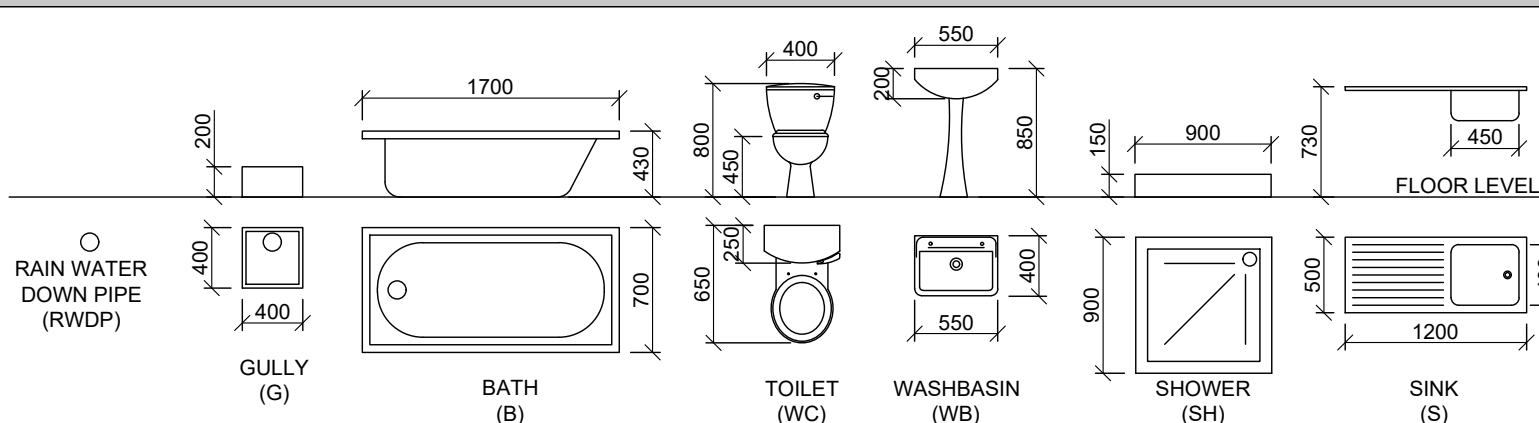
- A = OPENING SIDE
- B = HINGED SIDE
- C = FIXED PANEL
- 150 x 20 mm FIBRE CEMENT SILL (30°) UNDER ALL WINDOWS
- 200 x 75 mm LINTEL ABOVE ALL DOOR & WINDOW OPENINGS
- ALL LINTELS ARE AT THE SAME HEIGHT
- ALL FRAMES 50mm THICK

ELECTRICAL SYMBOLS

NUMBER	SYMBOL	DESCRIPTION
1		SINGLE POLE SWITCH
2		DOUBLE POLE SWITCH
3		TRIPLE POLE SWITCH
4		CEILING MOUNTED LIGHT
5		WALL MOUNTED LIGHT
6		2 X 40 W FLUORESCENT LIGHTS
7		SWITCH SOCKET OUTLET
8		DISTRIBUTION BOARD

NOTE: REPLACE EACH NUMBER ON THE FLOOR PLAN WITH THE CORRESPONDING SYMBOL AS INDICATED AT THE END POINTS OF THE FREEHAND LINE REPRESENTING THE POWER CABLE JOINING THE DIFFERENT COMPONENTS WITH EACH OTHER

FIXTURES



LOAD BEARING WALLS = 200mm
NON LOAD BEARING WALLS = 110mm

QUESTION 4: CIVIL DRAWING

Given:

- The incomplete floor plan showing the walls, position of the doors, windows, fixtures and electrical layout
- The incomplete north elevation showing the walls, window openings and roof
- The incomplete foundation and external wall detail
- Room designations and floor finishes
- A door and window schedule
- A table of electrical features
- A table of features and fixtures
- The incomplete floor plan and north elevation of the restaurant, drawn to scale 1 : 50 and the incomplete foundation, roof detail and break line of the detailed section view, drawn to scale 1 : 20 on page 4.6.

Instructions:

Answer this question on page 4.6.

4.1 Use the given incomplete floor plan, incomplete elevation view and incomplete section view and draw, in first-angle orthographic projection and to a **required scale**, the following views of the restaurant:

4.1.1 THE COMPLETE FLOOR PLAN.

Add the following features to the drawing:

- ALL doors and windows
- ALL hatching detail.

4.1.2 THE COMPLETE NORTH ELEVATION.

Show the following features on the drawing:

- The outside walls, door detail and window detail
- The natural ground level and finished floor level

4.2 Use the incomplete wall detail and break of continuity line on page 4.6 and draw, to scale 1 : 20, a detailed section view on cutting plane C - C of the area in the ellipse shown on the incomplete floor plan.

Show the following features on the drawing:

- The complete detail of the foundation and wall
- ALL hatching detail. Only the substructure hatching may be drawn in neat free hand

Label the following:

- The appropriate title and scale of each view
- The room designations and floor finishes
- Ground level, finished floor level and damp prove coarse as abbreviations on all relevant views

NOTE:

- ALL drawings must comply with the guidelines and graphical symbols as contained in the *SANS 10143*. [62]



CIVIL

ESTIMATED TIME FOR COMPLETION

40 MIN

GRADE

INITIALS & SURNAME

TASK

PAGE

YOUR TIME FOR COMPLETION

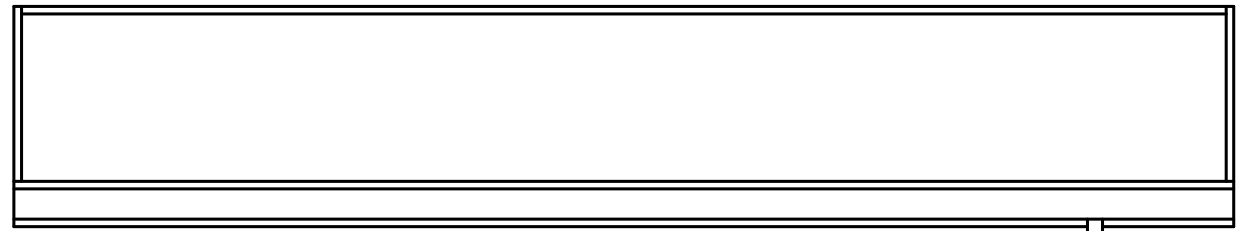
MIN

10

11.3

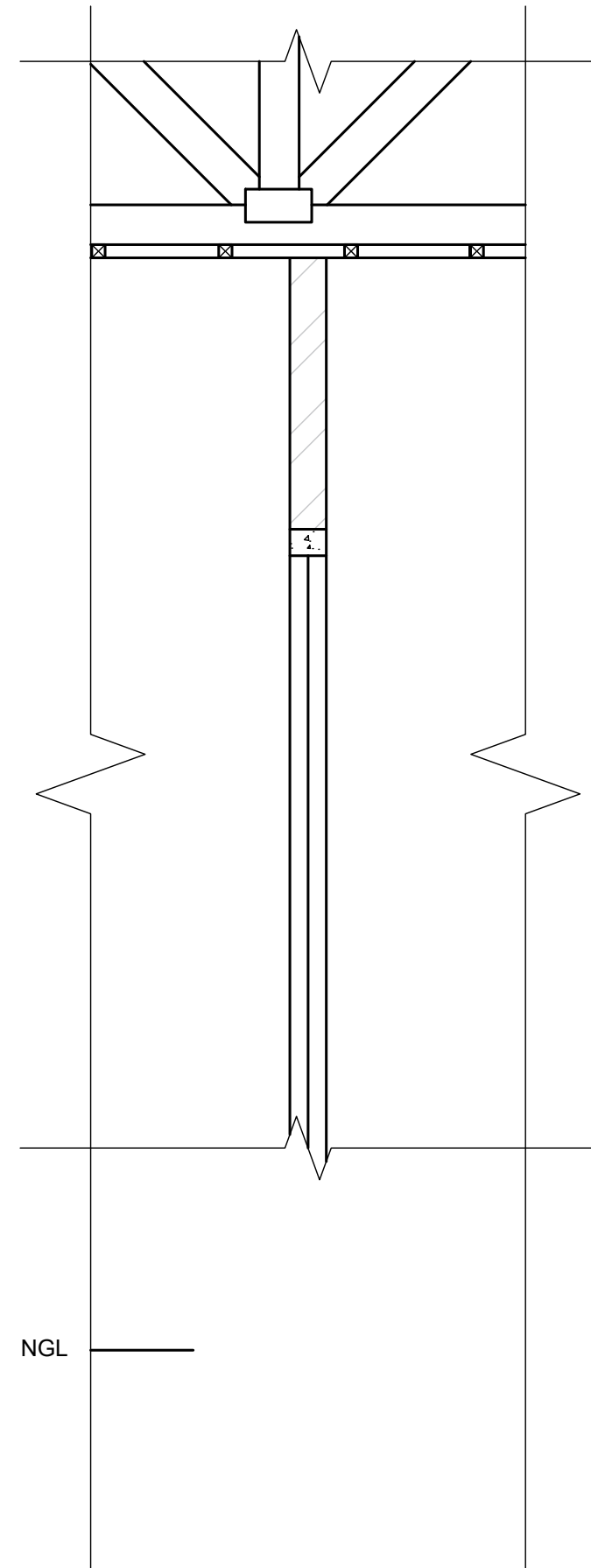
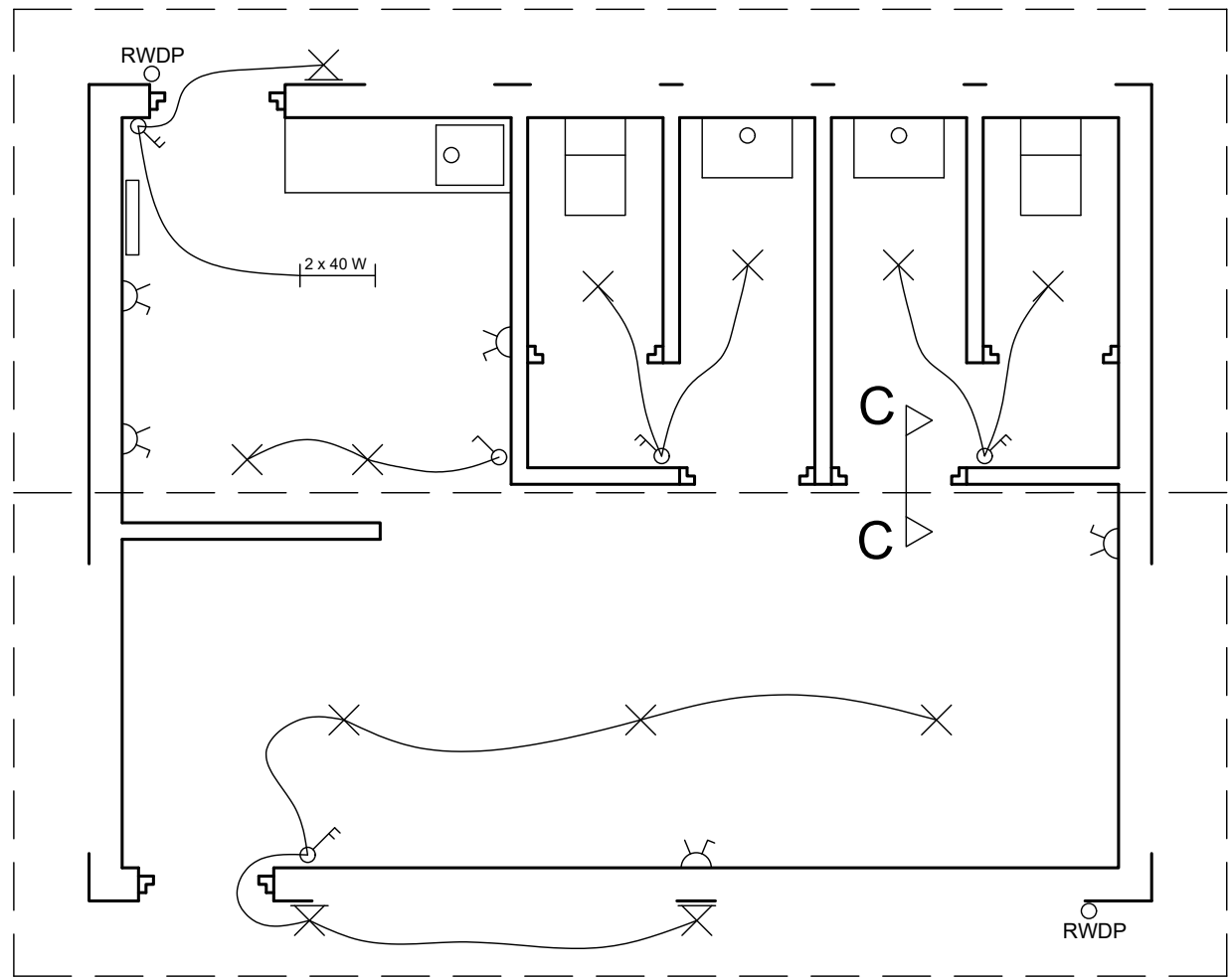
5.8

STAPEL



NGL

NGL



NGL

PENALIZING FOR OFFICE USE ONLY	
INCORRECT SCALE(S) USED	-2
NON-ALIGNMENT OF VIEWS	-2
VIEW(S) ROTATED	-2
SECTION VIEWED INCORRECTLY	-2
INCORRECT LETTERING	-1
TOTAL	

ASSESSMENT CRITERIA				
FLOOR PLAN				
1	DOORS + WINDOWS	25		
2	HATCHING	4		
3	LABELS	5		
SUB TOTAL 1		34		
NORTH ELEVATION				
1	WALLS + FFL + NGL	2		
2	DOOR + WINDOW	14		
3	LABELS	1		
SUB TOTAL 2		17		
DETAILED SECTION				
1	FOUNDATION + WALL + SLAB	7		
2	HATCHING	3		
3	LABELS	2		
SUB TOTAL 3		12		
TOTAL		63		
TOTAL PENALTIES (-)				
GRAND TOTAL				



CIVIL WORK DRAWING

ESTIMATED TIME FOR COMPLETION
YOUR TIME FOR COMPLETION

40 MIN
MIN

GRADE
10

INITIALS &
SURNAME

TASK
11.3

PAGE
5.9