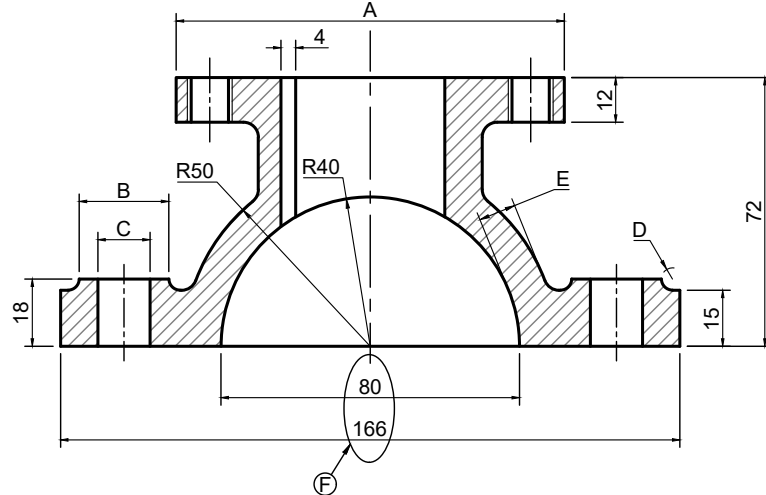
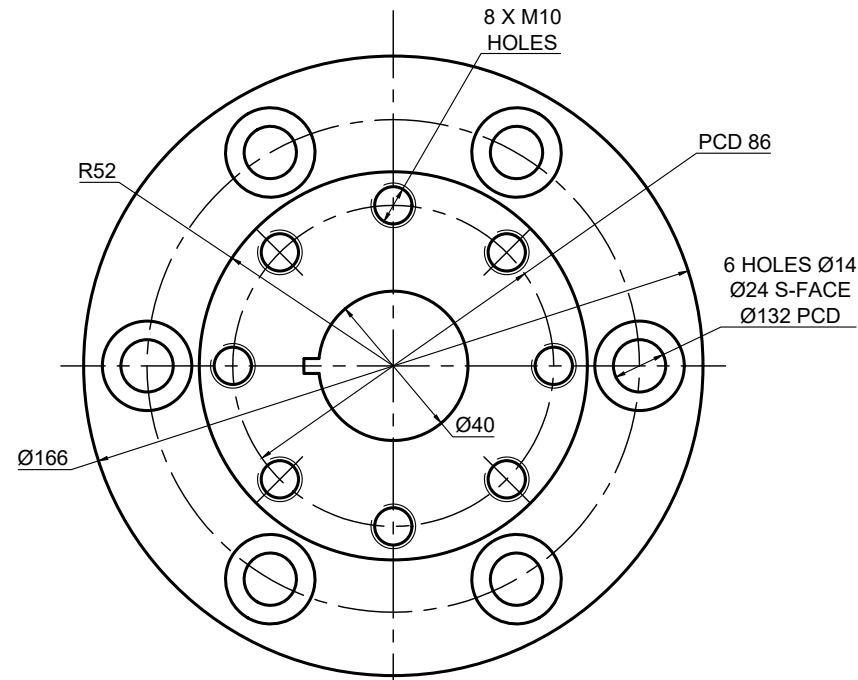


VIEW 1



VIEW 2

NOTES

ALL SIZES IS IN MILLIMETERS.
ALL RADUIS NOT GIVEN IS R3.

ACCEPTED: N.J. MULL

DATE: 21/07/2010

CHECKED: W. WILLIAMS

DATE: 13/05/2010

DRAWN: DAVID

DATE: 27-04-2010

PROJECTION SYSTEM
T.A.O.P.

DEP EDU(PTY) LTD

125 Mulner
Bloemfontein
9460
pcv@edu.ac.za

COMPONENTS	MATERIAL
1 FLANGE COUPLING	CAST IRON
2 BOLT	MILD STEEL (NOT SHOWN)
3 WASHER	MILD STEEL (NOT SHOWN)
4 NUT	MILD STEEL (NOT SHOWN)

HEAT TREATMENT: HARDENED
QUANTITY: 260
FILE NAME : DEP EDU-2010
DRAWING NUMBER: EDU/0537
CAD SYSTEM: AUTOCAD 2008
TITLE: SUB ASSEMBLY OF A FLANGE COUPLING



QUESTION 1: ANALYTICAL (MECHANICAL)

Given:

The working drawings of a diaphragm regulator with a title block and a table of questions.

Instructions:

With a pencil, complete the table by neatly printing the correct answers in the corresponding answer column. All the questions refer to the accompanying drawings and the title block on diagram sheet A. [23]

QUESTIONS		ANSWERS	
1	On what date was the drawing first completed?	1	
2	Who checked the drawing?	1	
3	What is the name of the manufacturing company?	1	
4	What is the drawing number?	1	
5	How many M10 holes are shown?	1	
6	How many parts must be manufactured?	1	
7	What is the file name?	1	
8	How many parts are shown on this diagram sheet?	1	
9	Who drew the drawing?	1	
10	Name view 1	1	
	Name view 2	1	
11	Calculate the following dimensions? A: B: C: D: E:	5	
12	What is the scale of this drawing?	1	
13	What is wrong at the dimensions marked F?	1	
14	What orthographic projection system has been used?	1	
15	Draw in free hand, the orthographic system symbol that has been used in the space provided.	4	
TOTAL		23	

MECHANICAL ANALYTICAL	ESTIMATED TIME FOR COMPLETION	15 MIN	GRADE 11	NAME & SURNAME		TASK 1.1	PAGE 1
	YOUR TIME OF COMPLETION	MIN					