

**QUESTION 3: PERSPECTIVE**

**Given:**

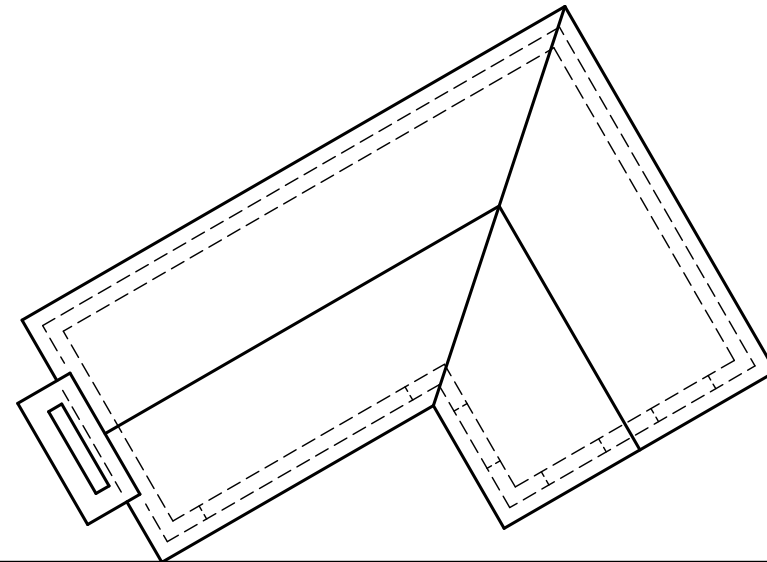
Top view and front view of a dwelling with an incomplete roof and all information to draw the two point perspective drawing.

- PP - Picture plane
- HL - Horizon line
- GL - Ground line
- SP - Station point

**Instructions:**

Complete the perspective drawing.

- Align the drawing sheet with the ground line (GL).
- Determine and label the vanishing points,
- Show internal lines seen through the doorway and windows.
- Show all construction.
- No hidden detail is required.

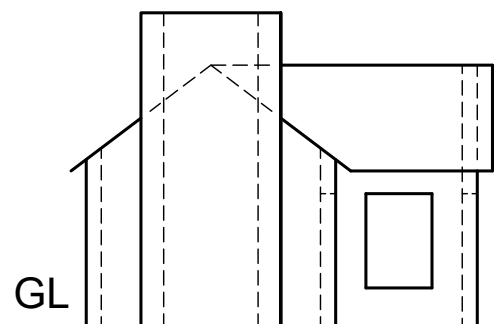


PP

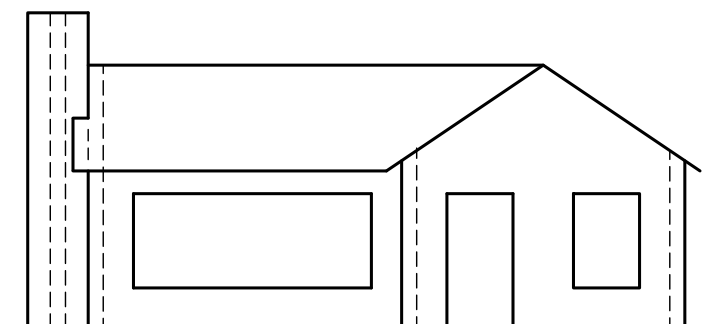
[38]  
PP

HL

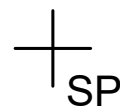
HL



GL



GL



ASSESSMENT CRITERIA			
1	CONSTRUCTION	3	
2	WALLS	13	
3	DOORS & WINDOWS	13	
4	ROOF	9	
PENALIZING			
<b>TOTAL</b>		<b>38</b>	



PERSPECTIVE DRAWING	ESTIMATED TIME FOR COMPLETION	40 MIN	GRADE	NAME & SURNAME	TASK	PAGE
	YOUR TIME OF COMPLETION	MIN	11			