

QUESTION 3: PERSPECTIVE

Given:

Top view and front view of a dwelling with an incomplete roof and all information to draw the two point perspective drawing.

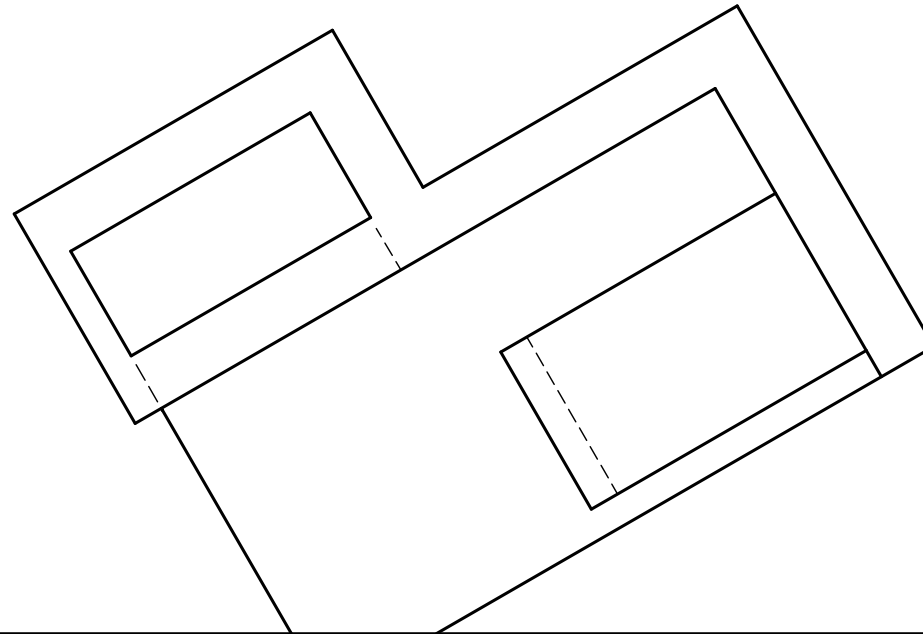
- PP - Picture plane
- HL - Horizon line
- GL - Ground line
- SP - Station point

Instructions:

Complete the perspective drawing.

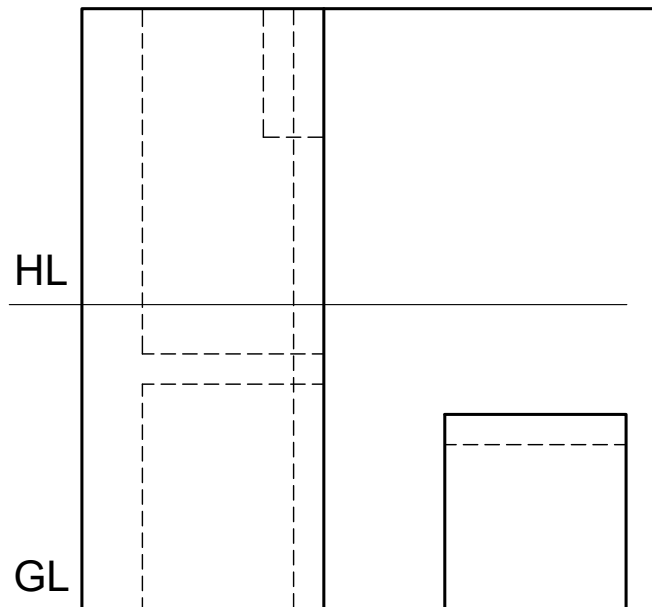
- Align the drawing sheet with the ground line (GL).
- Determine and label the vanishing points,
- Show internal lines seen through the doorway and windows.
- Show all construction.
- No hidden detail is required.

[33]



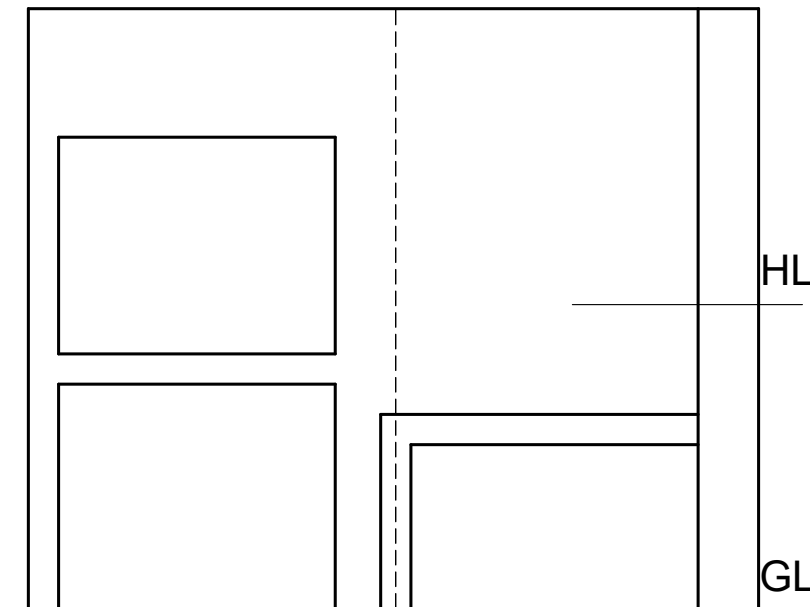
PP

PP



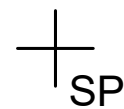
HL

GL



HL

GL



ASSESSMENT CRITERIA			
1	CONSTRUCTION	3	
2	WALLS	10.5	
3	DOORS & WINDOWS	8	
4	ROOF	11.5	
PENALIZING			
TOTAL		33	



PERSPECTIVE DRAWING	ESTIMATED TIME FOR COMPLETION	40 MIN	GRADE	NAME & SURNAME	TASK	PAGE
	YOUR TIME OF COMPLETION	MIN	11			