

2.2.1 THE
CONSTRUCTION
INDUSTRY
CIVIL DRAWINGS
(Floor plan)

Developed by: PC Viljoen
Senior Educational Specialist for
Engineering Graphics and Design
Free State Province

PRESCRIBED CONTENT FOR GRADE 10, 11 & 12

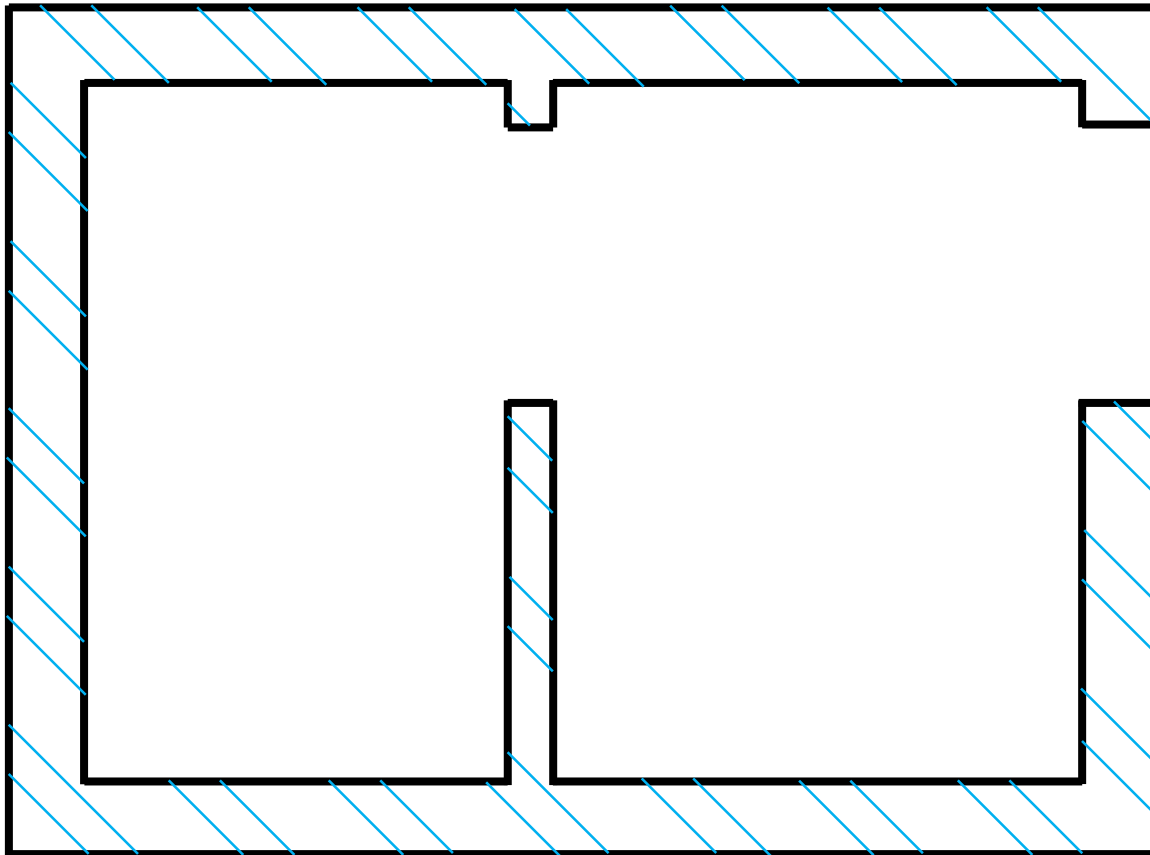
- **The floor plan showing the windows and doors.**
- Elevation drawings.
- Sectional elevations showing the detail from the foundation to the roof ceiling.

FLOOR PLAN

- The walls of a house can be
 - load bearing (220mm)
 - or
 - non-load bearing (110mm)

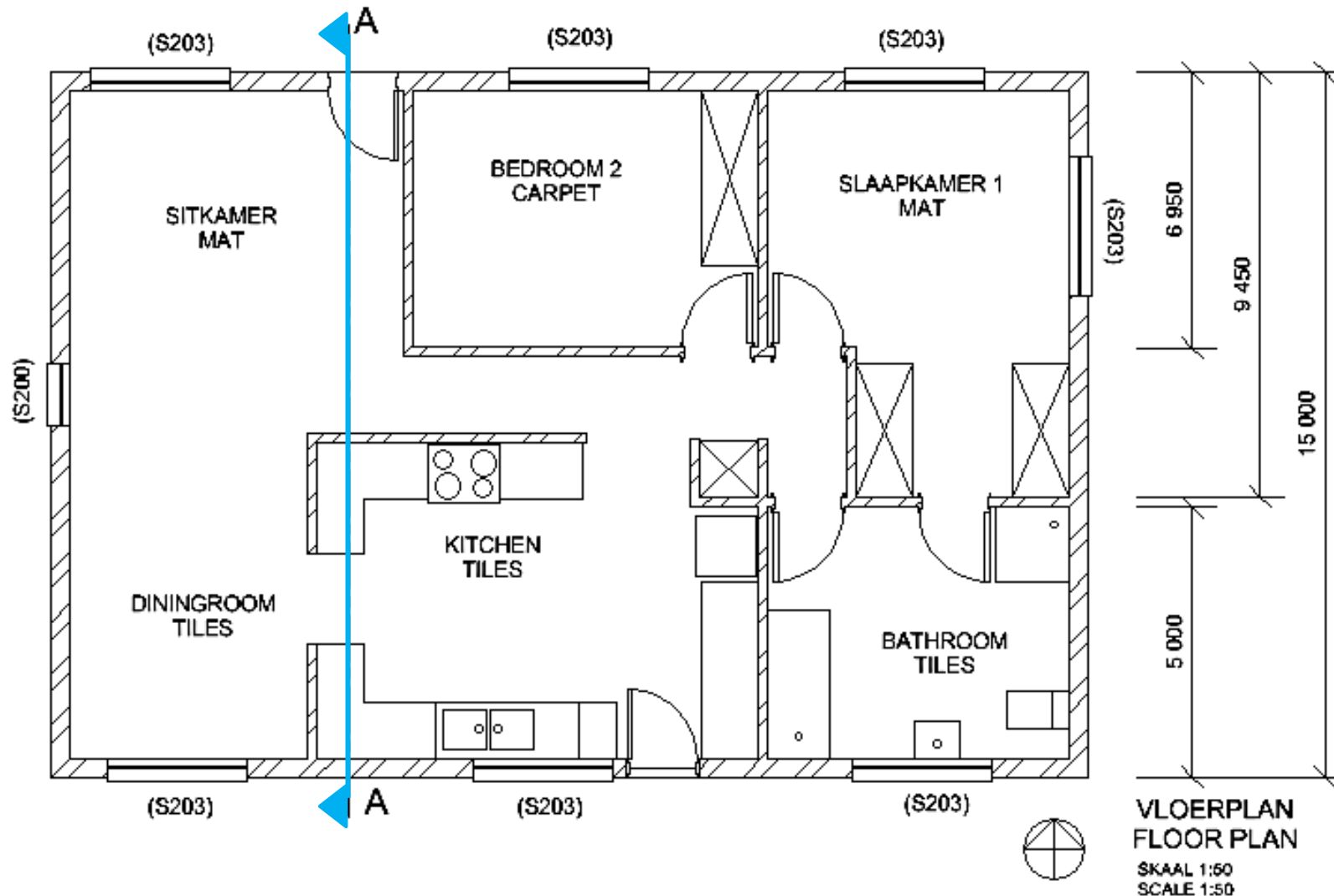
FLOOR PLAN

- The walls of a house



FLOOR PLAN

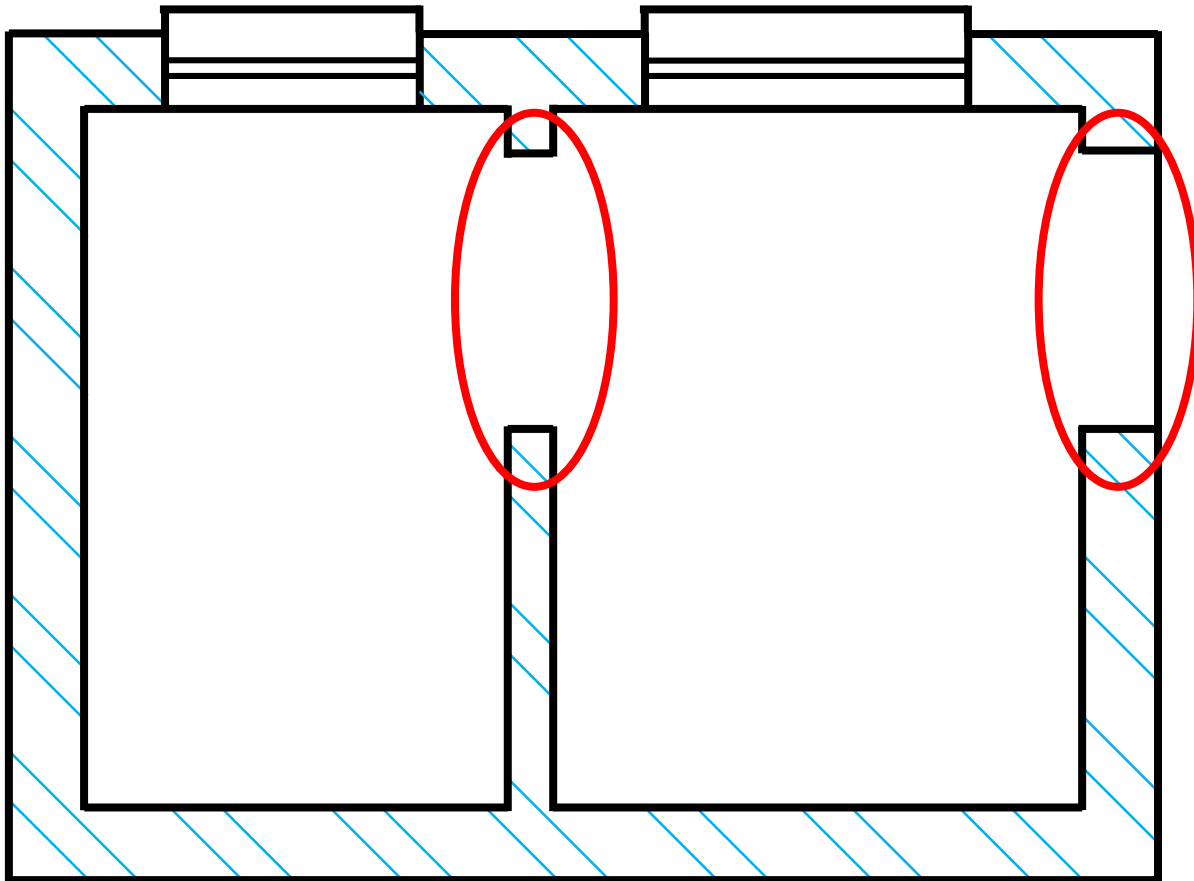
- The walls of the house



VLOERPLAN
FLOOR PLAN
SKAAL 1:50
SCALE 1:50

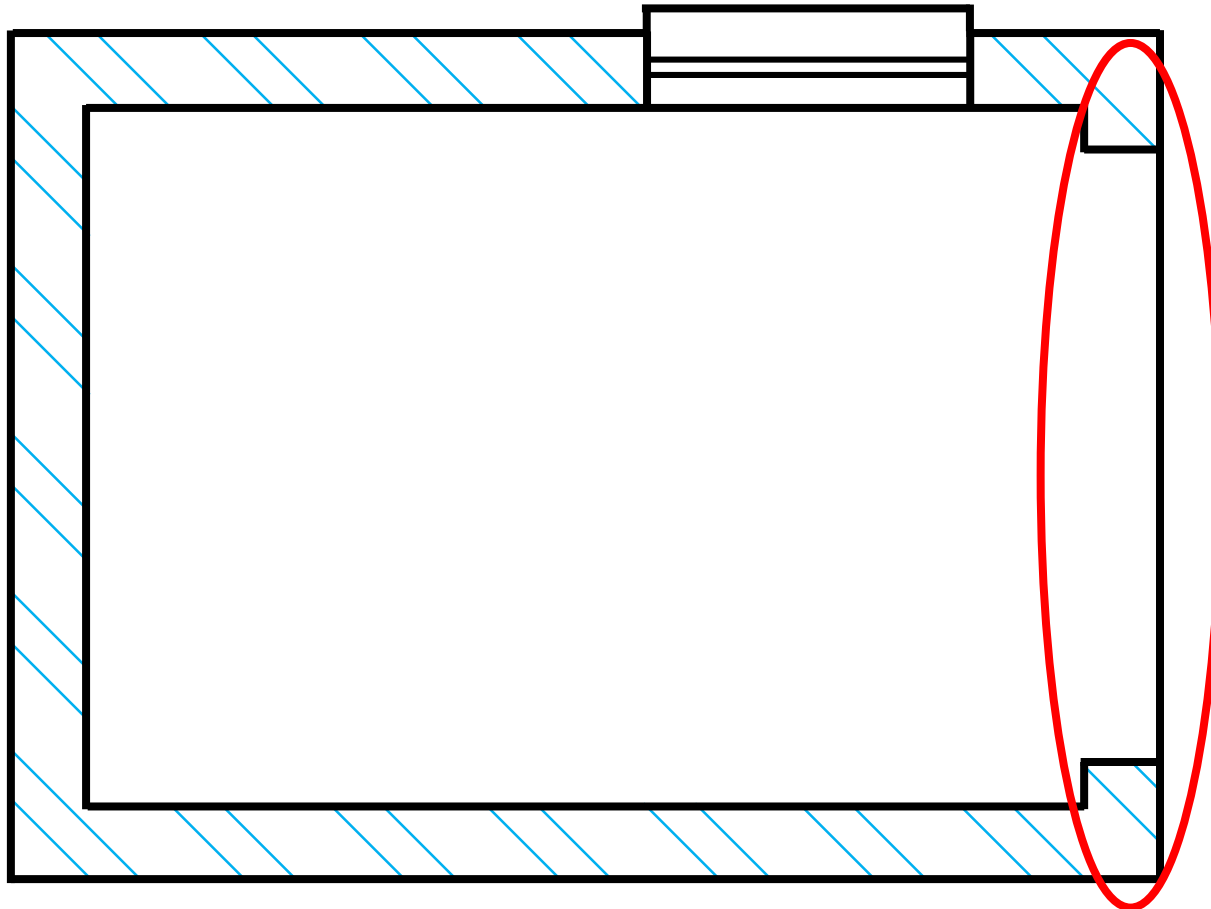
FLOOR PLAN

- Interior & exterior door openings.



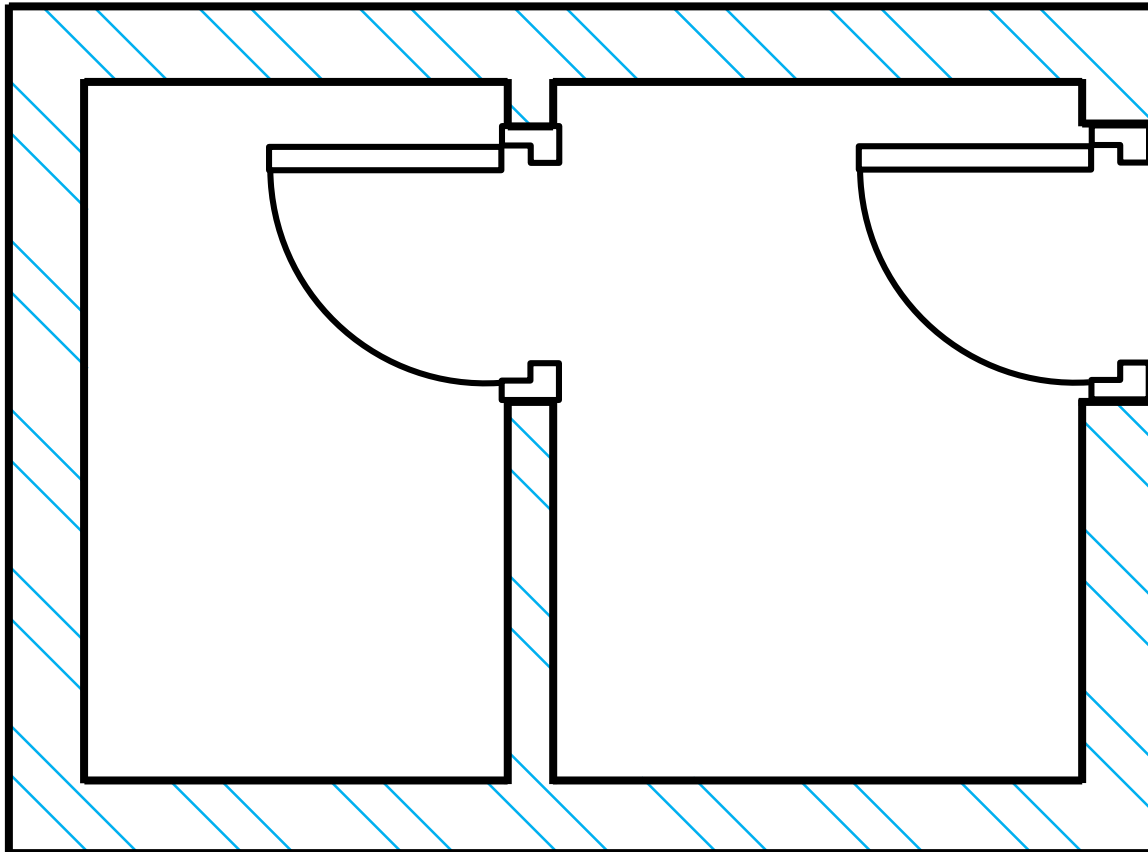
FLOOR PLAN

- Exterior garage door openings.



FLOOR PLAN

- The doors of a house

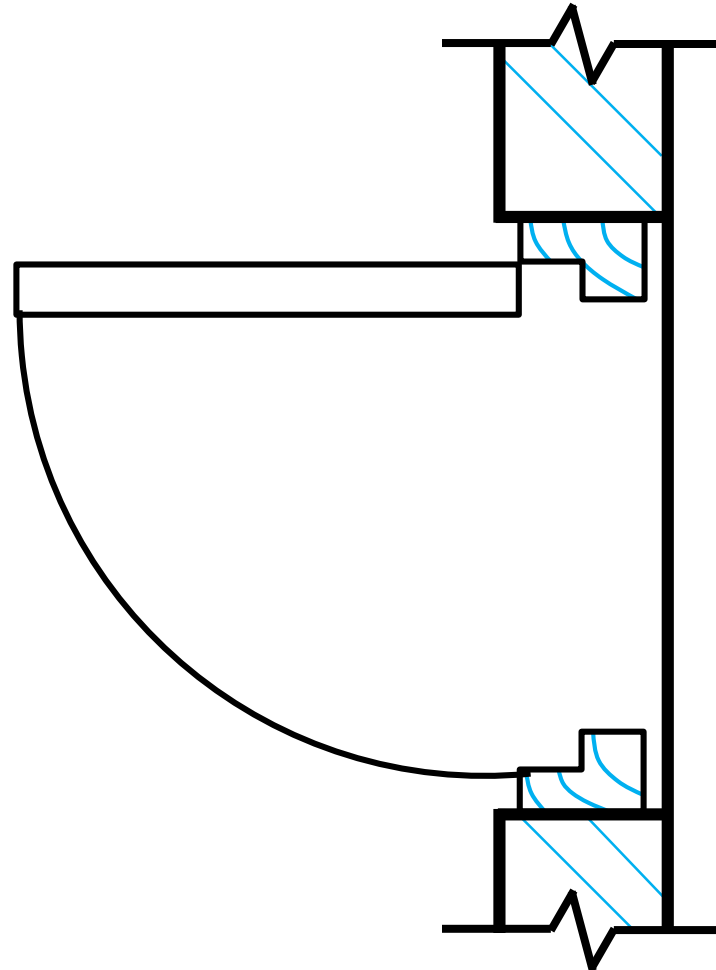


FLOOR PLAN

- The door frames of a house can be manufactured from...
 - Wood
 - Steel or
 - Aluminum

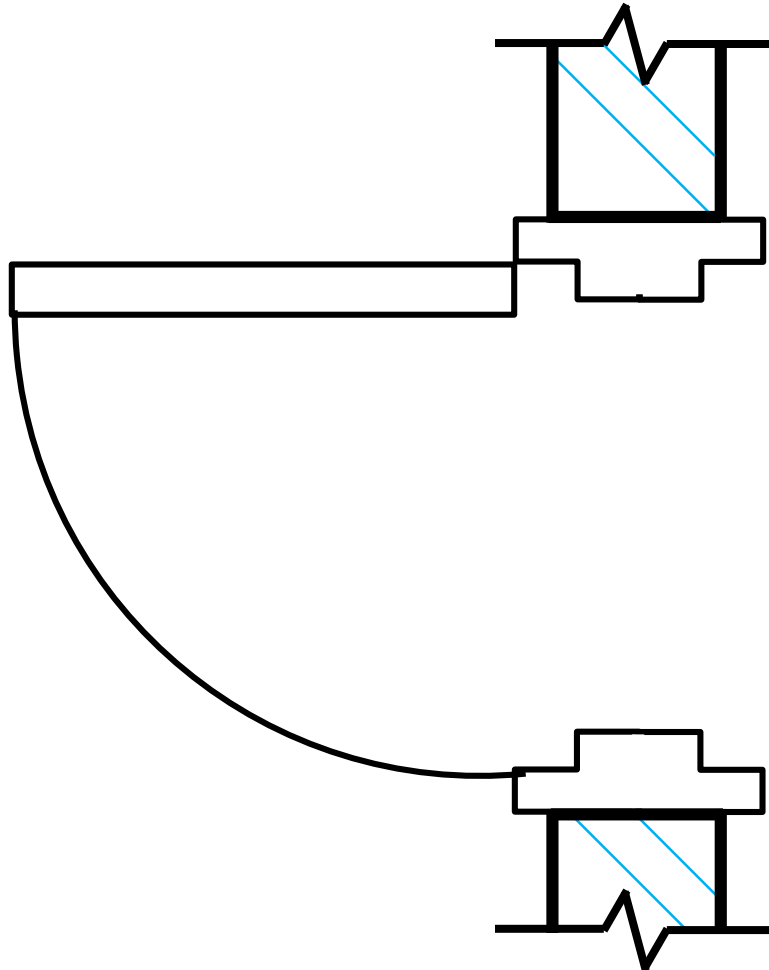
FLOOR PLAN

- Wooden door frame



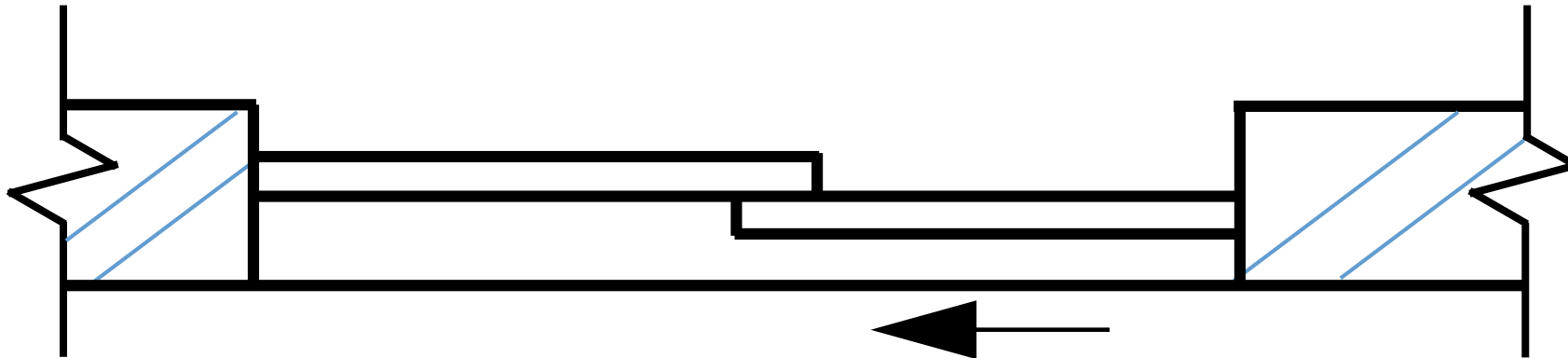
FLOOR PLAN

- Steel door frame



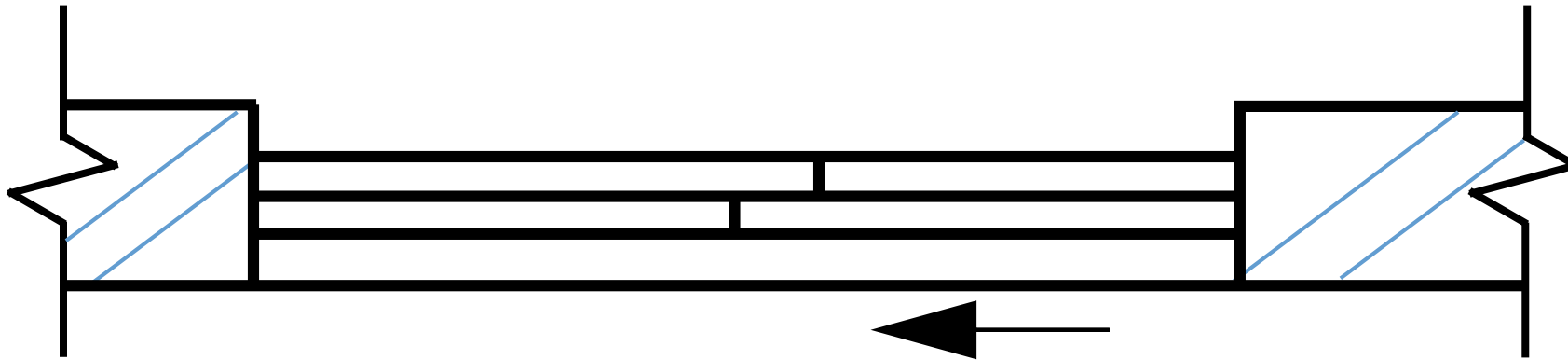
FLOOR PLAN

- Aluminum door frame
 - The arrow indicate the sliding direction of the door.



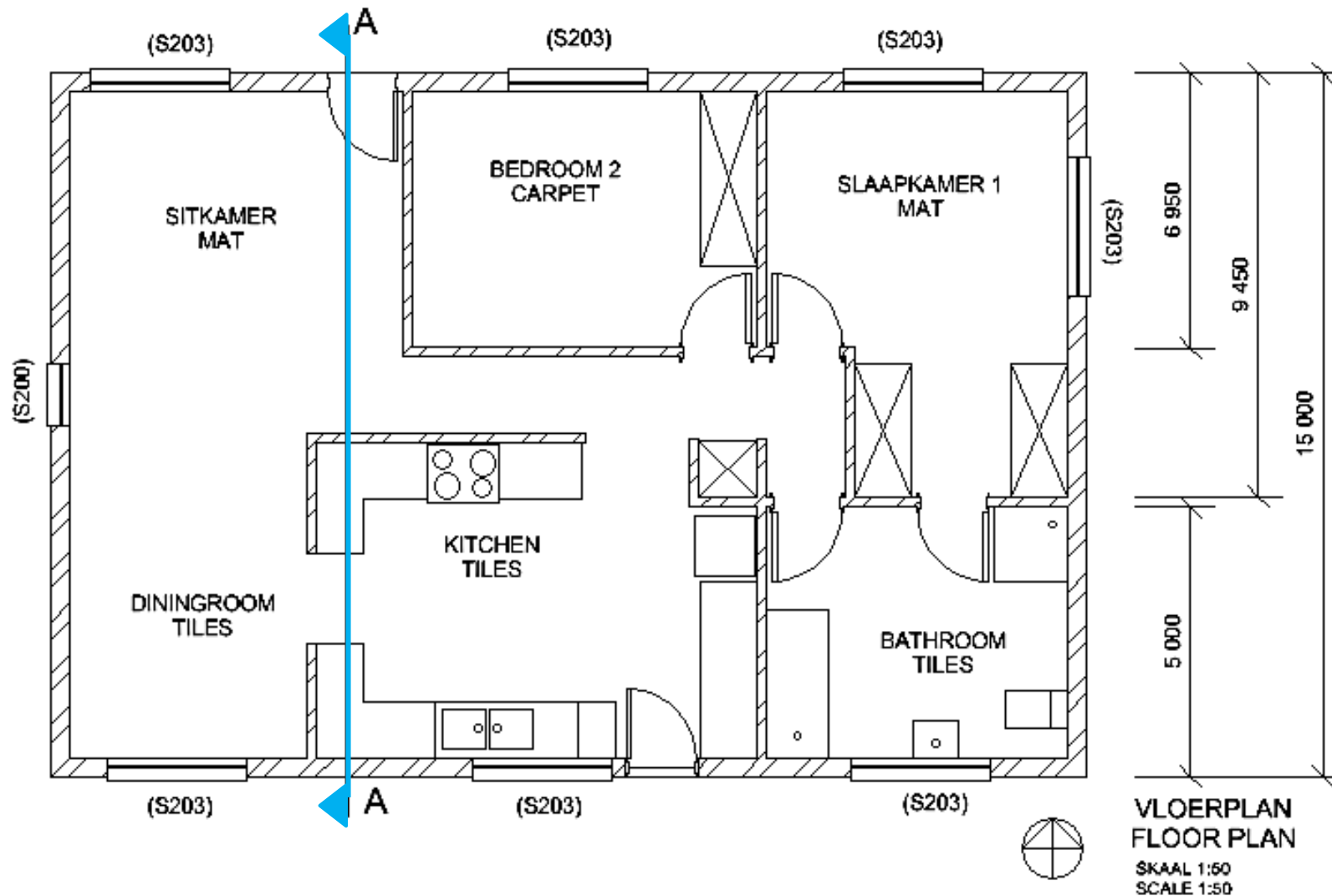
FLOOR PLAN

- Aluminum door frame
 - The arrow indicate the sliding direction of the door.

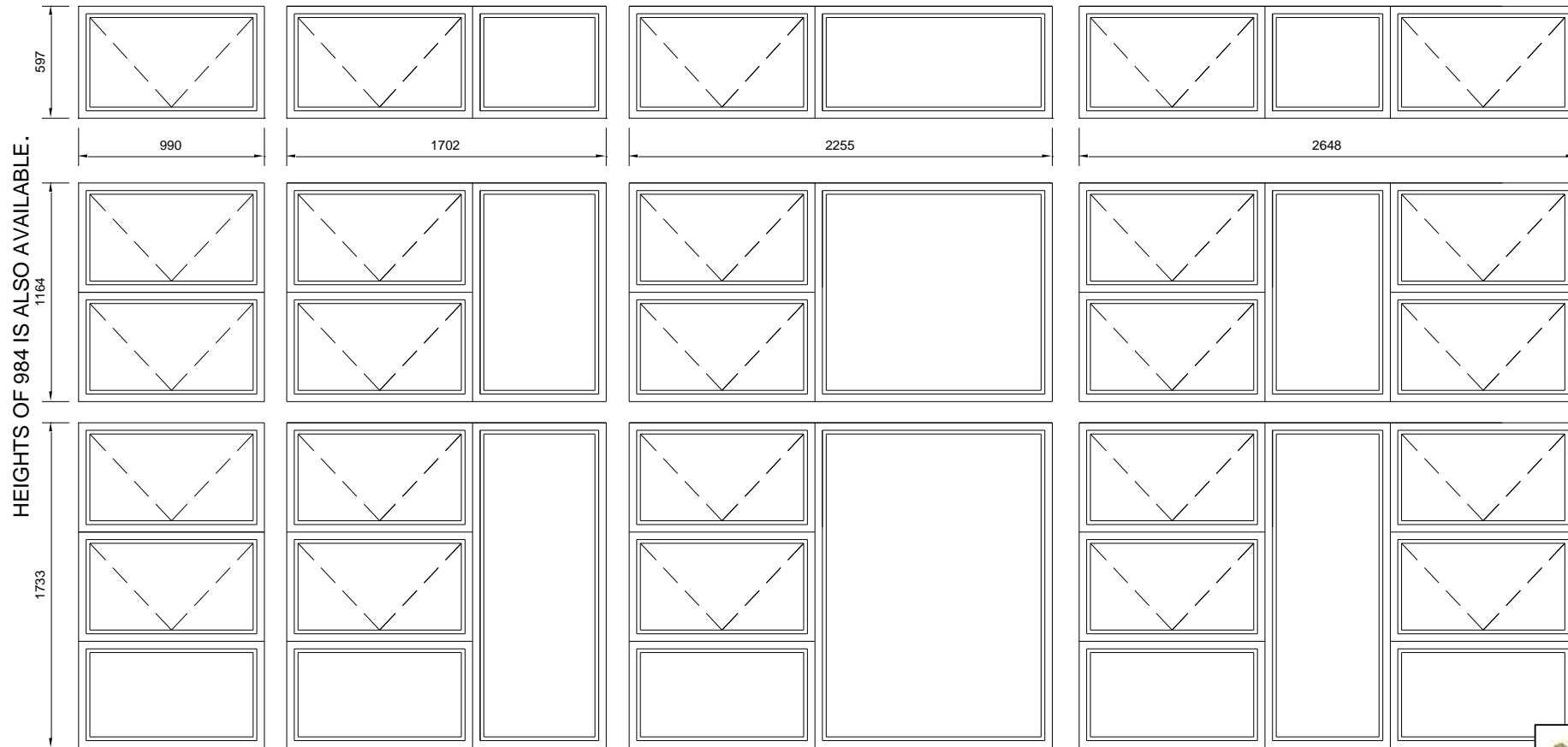


FLOOR PLAN

- All door openings (functionality & privacy)

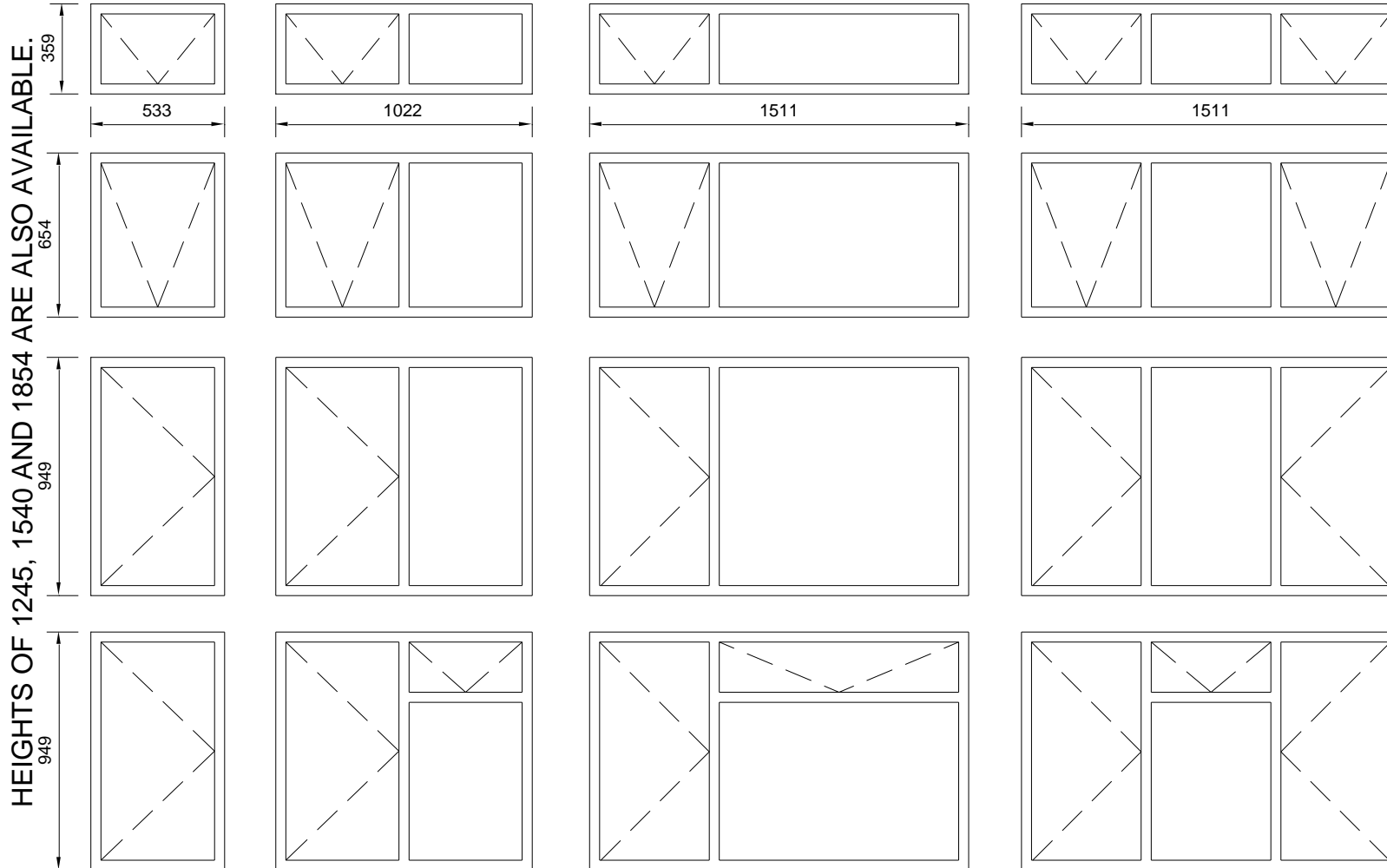


WINDOWS ARE AVAILABLE IN DIFFERENT SHAPES & SIZES



WIDTHS OF 3200 IS ALSO AVAILABLE.

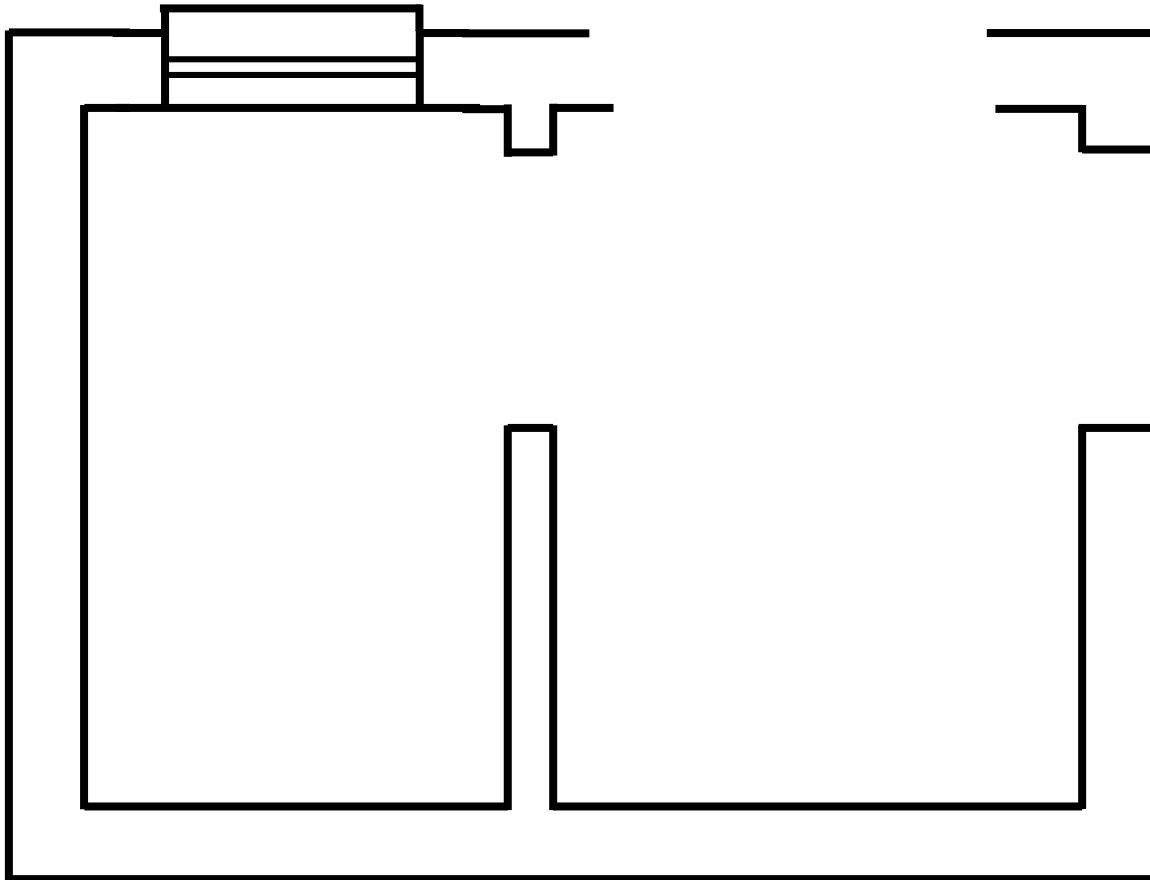
WINDOWS ARE AVAILABLE IN DIFFERENT SHAPES & SIZES



WIDTHS OF 305, 2000 AND 2489 ARE ALSO AVAILABLE.

FLOOR PLAN

- Drawing a window with a window sill

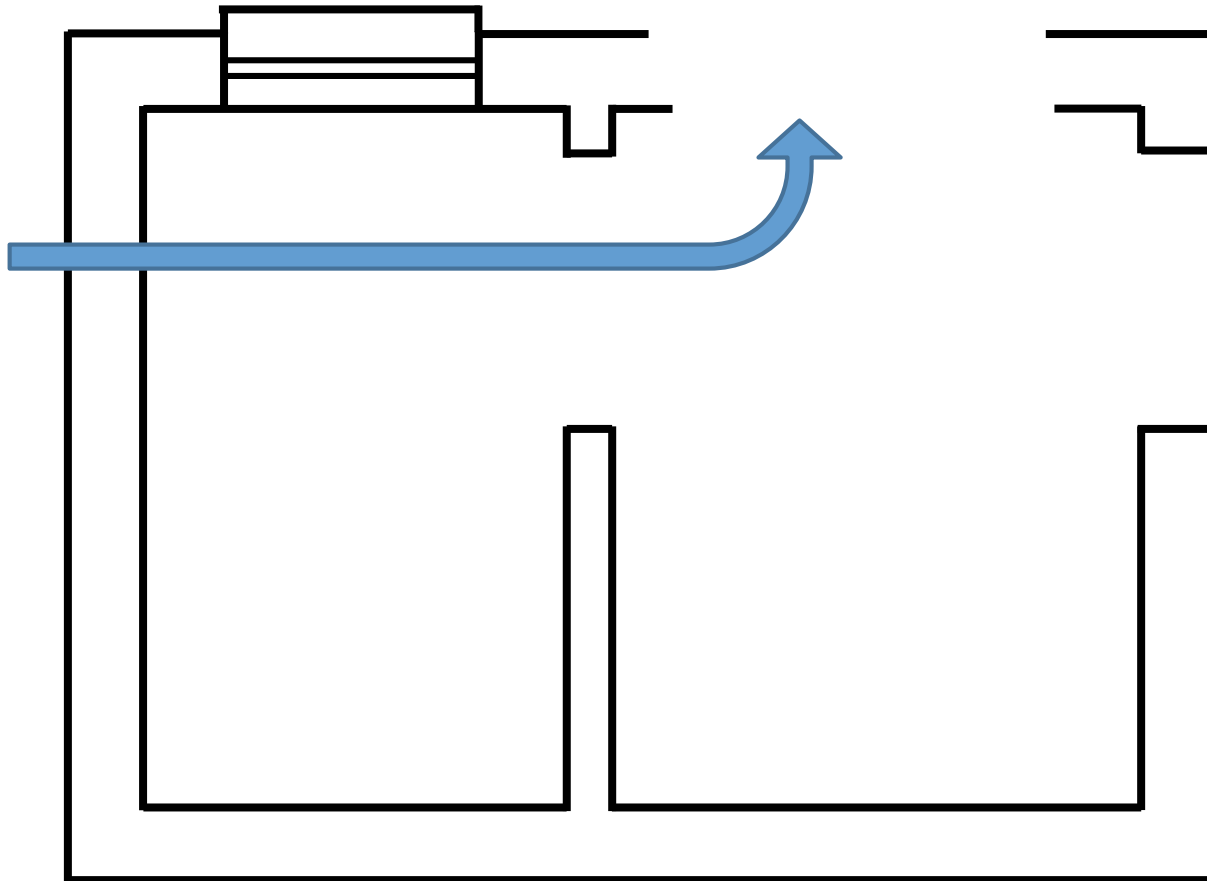
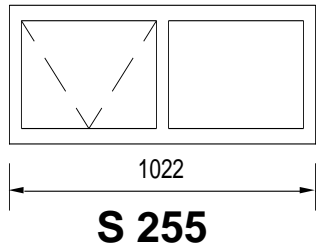


Scale 1:40



FLOOR PLAN

- The window placement on exam scripts



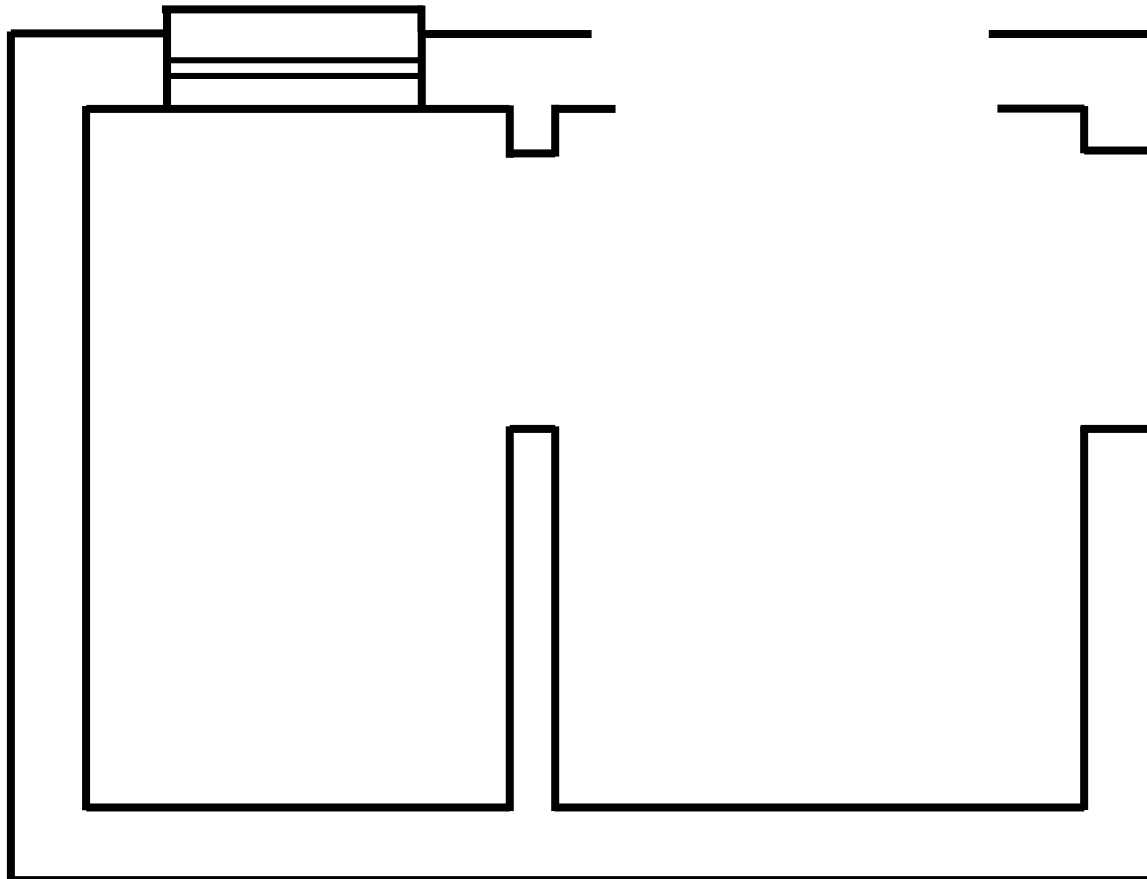
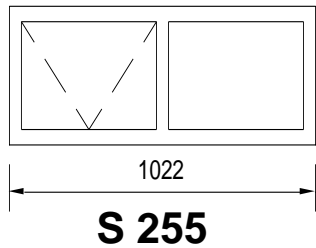
On an exam question paper, the gaps for window placement will be given larger than the size of the window.

Scale 1:40



FLOOR PLAN

- The window placement on exam scripts



On an exam question paper, the gaps for window placement will be given larger than the size of the window.

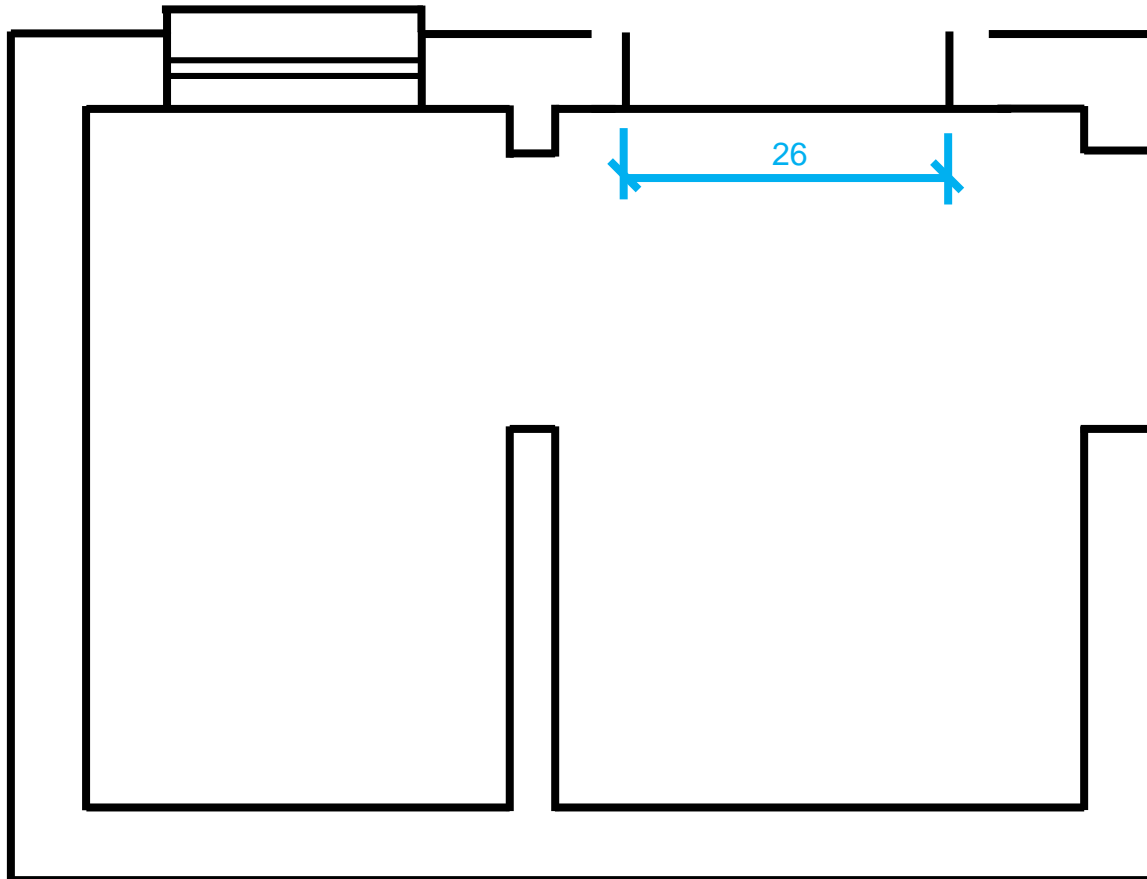
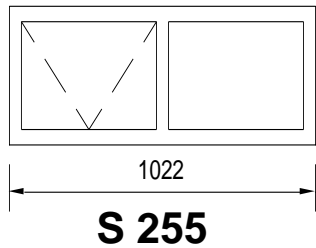
According to the given scale,
determine the size of the window
 $1022 \text{ mm} \div 40$
 $= 25,55 \text{ mm}$
 $= 26 \text{ mm}$

Scale 1:40



FLOOR PLAN

- The window placement on exam scripts



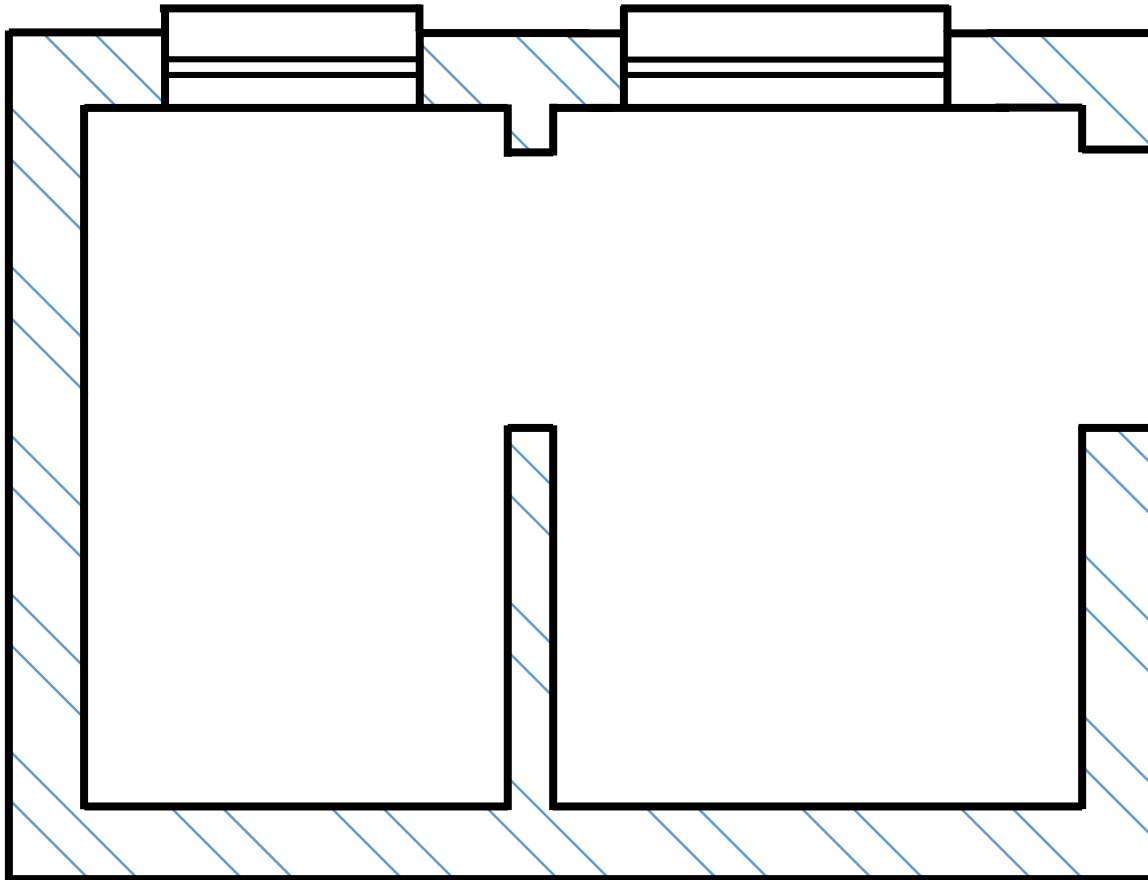
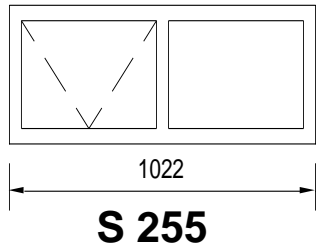
According to the given scale,
determine the size of the window
 $1022 \text{ mm} \div 40$
 $= 25,55 \text{ mm}$
 $= 26 \text{ mm}$

Scale 1:40



FLOOR PLAN

- The window placement on exam scripts



Scale 1:40

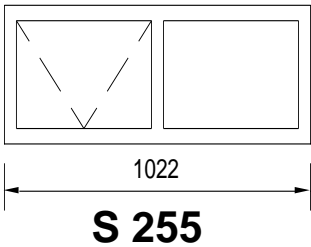
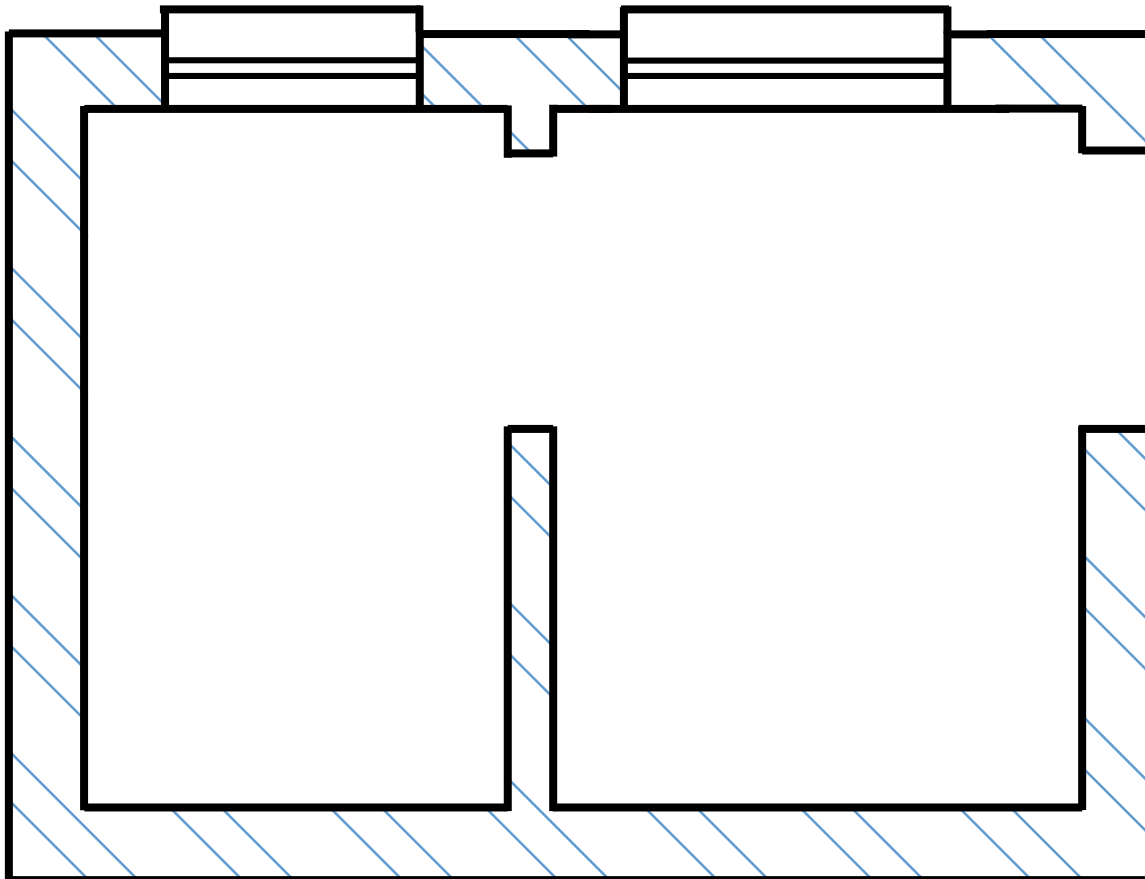


FLOOR PLAN

- The window placement on exam scripts

S 118

S 255

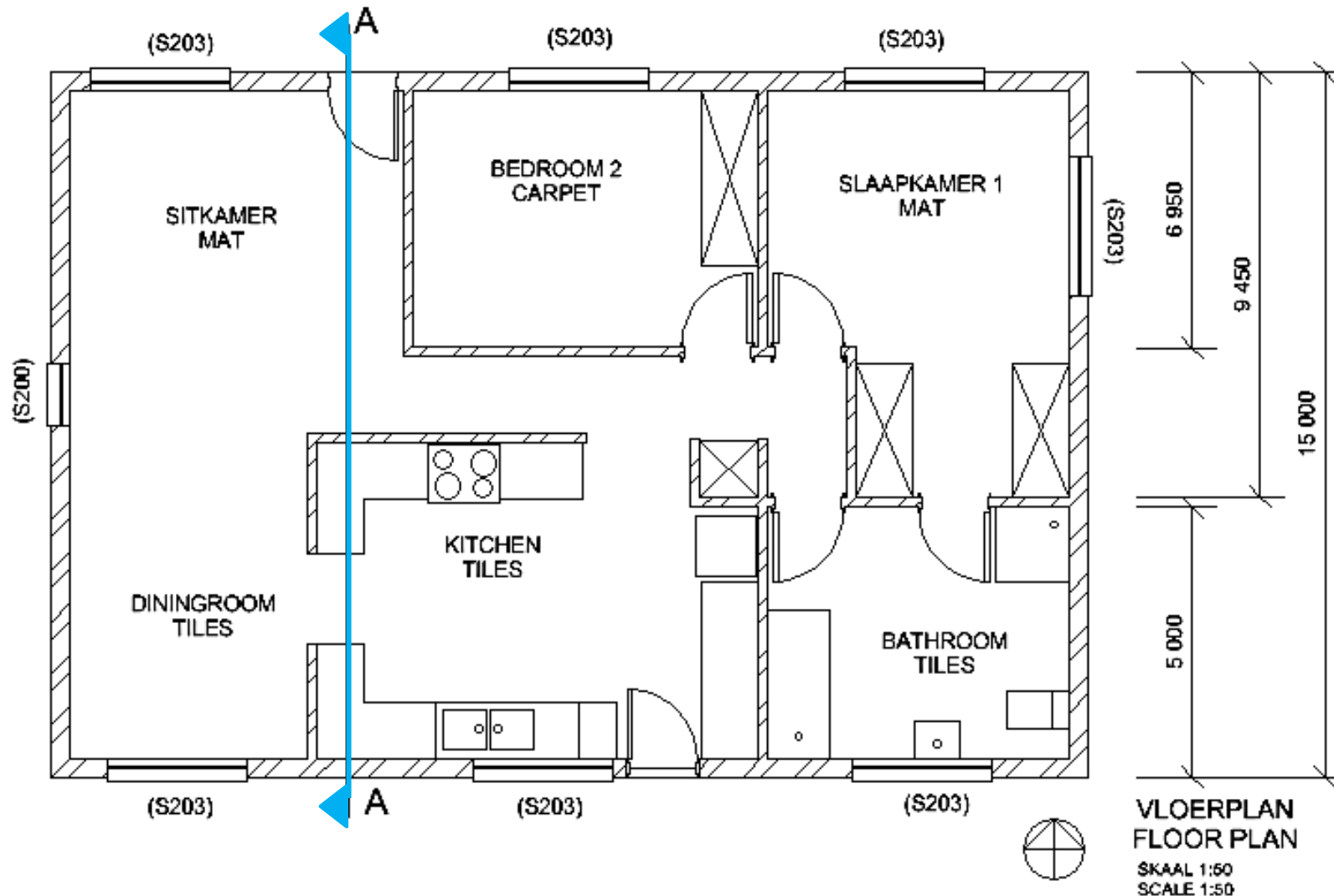


Scale 1:40



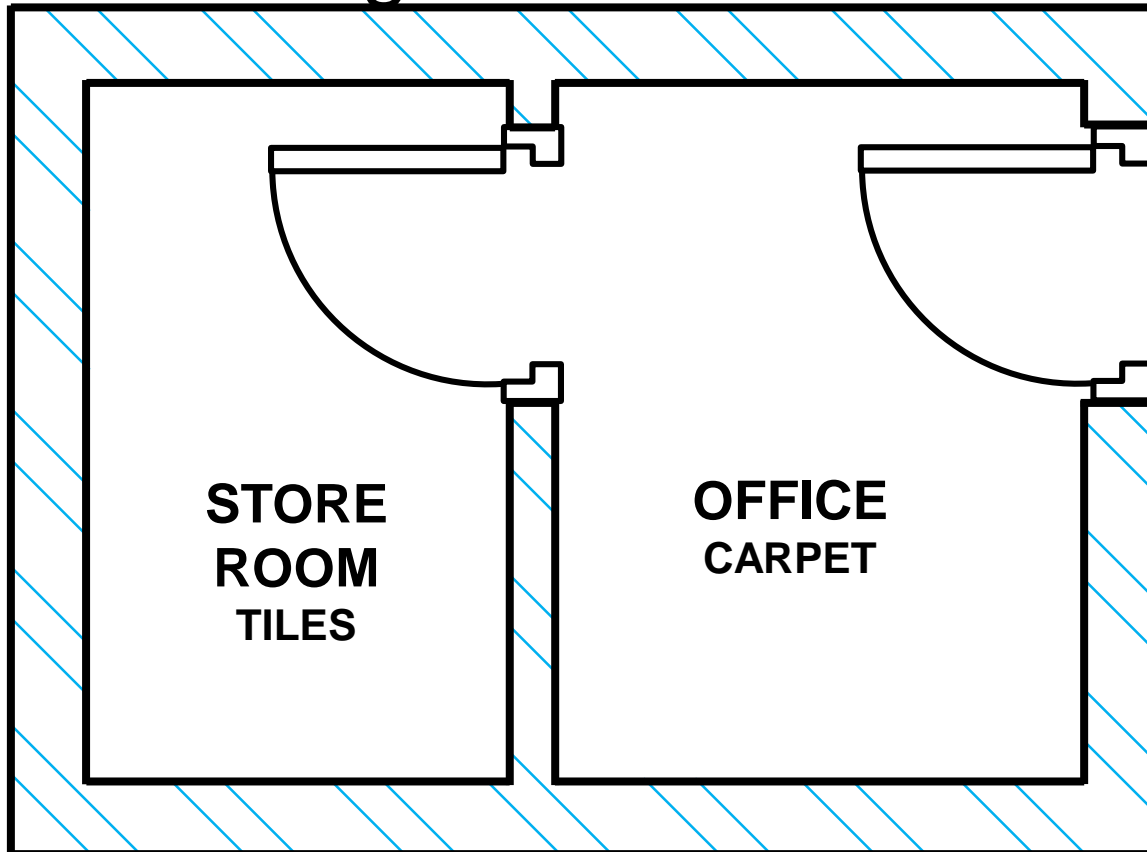
FLOOR PLAN

- The windows of a house



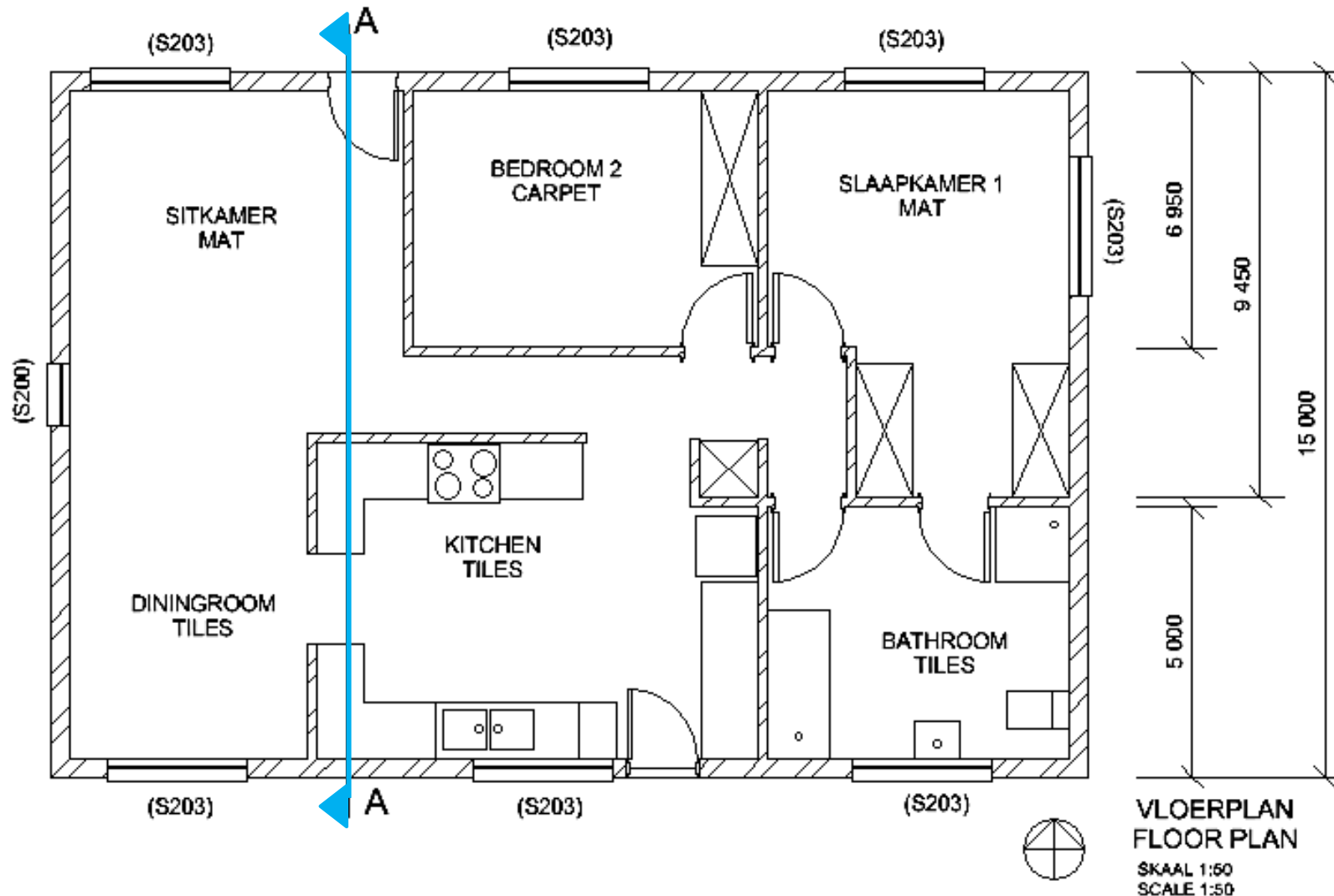
FLOOR PLAN

- Label room designations & floor coverage



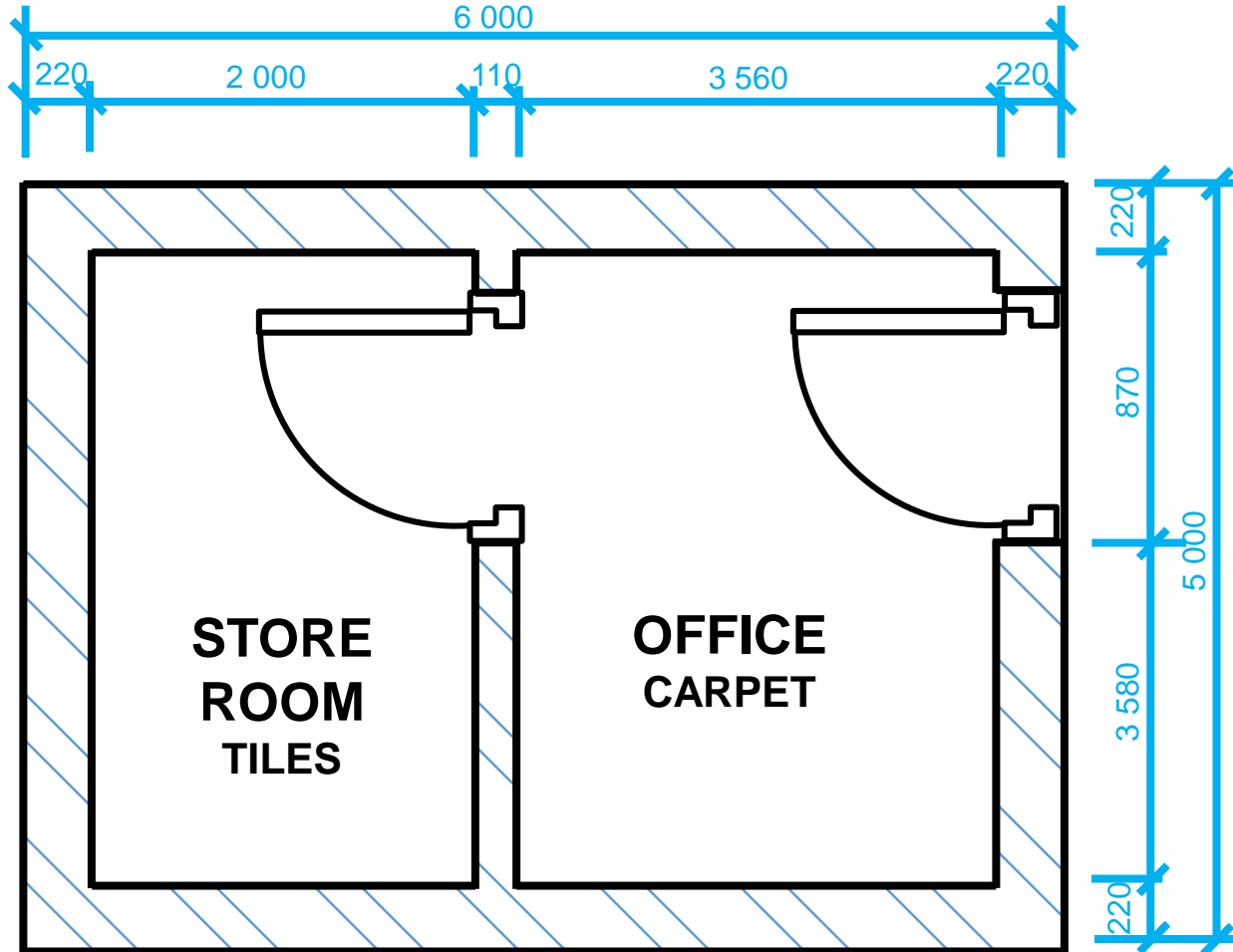
FLOOR PLAN

- Label room designations & floor coverage



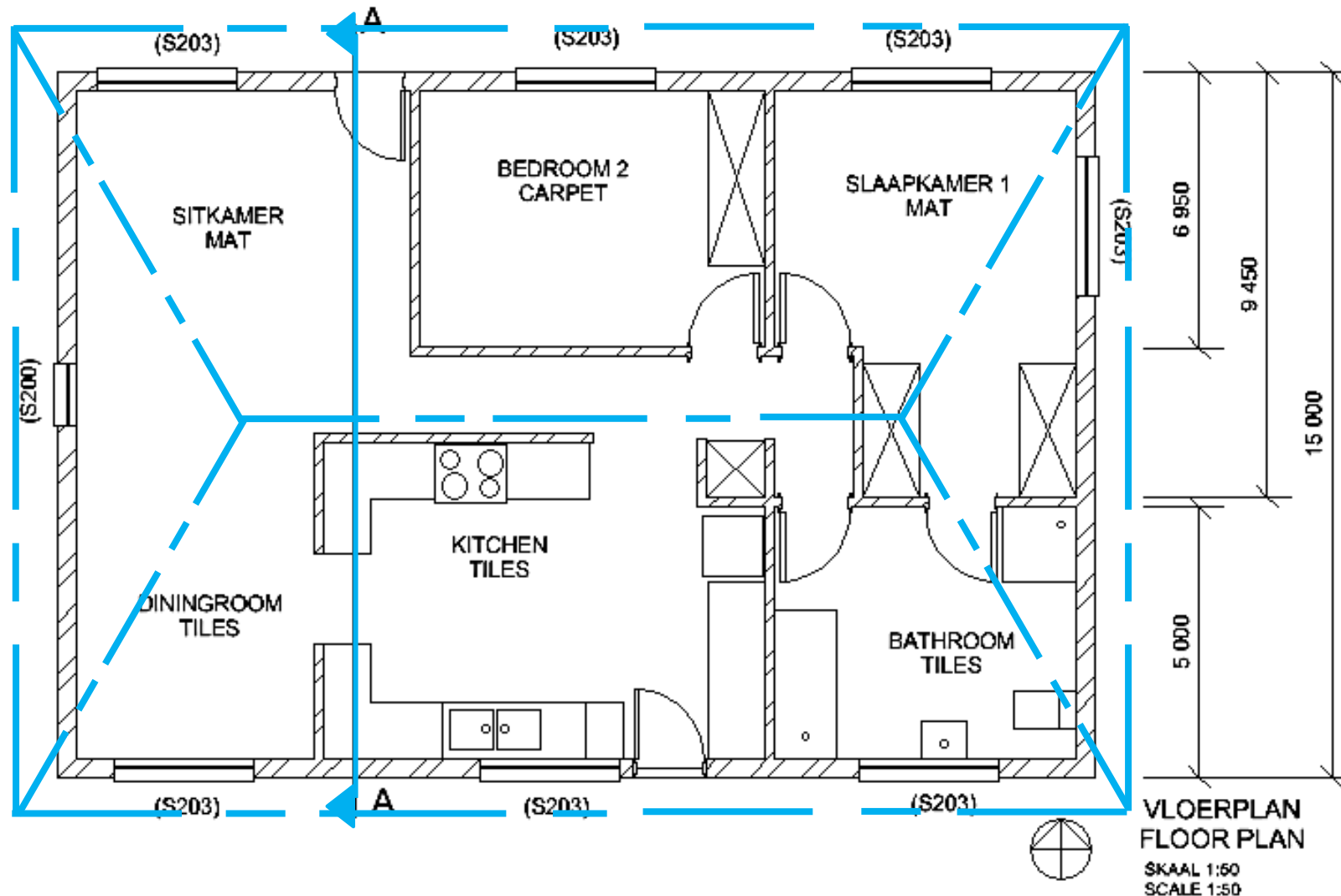
FLOOR PLAN

■ Dimensions



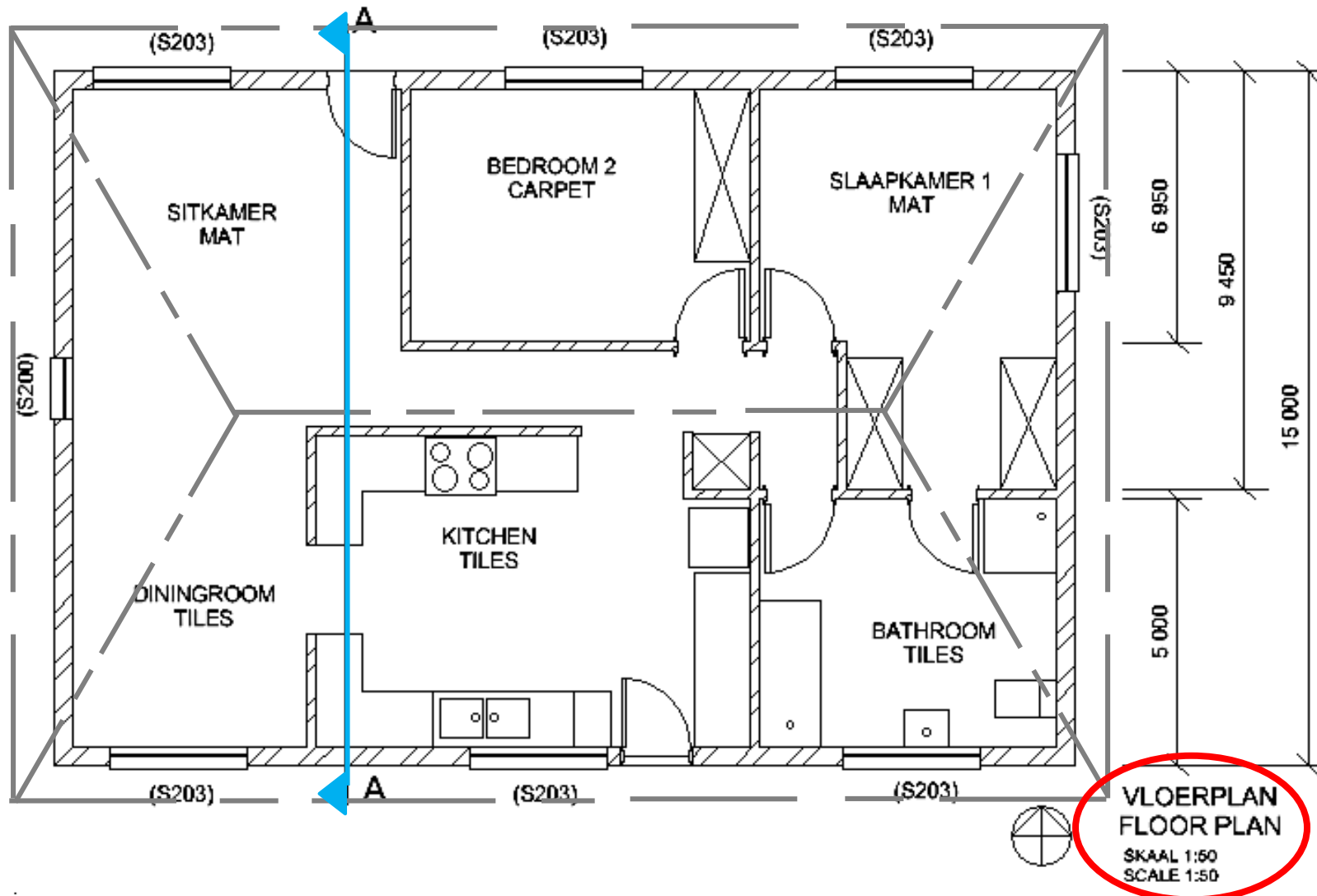
FLOOR PLAN

- The roof line



FLOOR PLAN

- The scale of the drawing



FLOOR PLAN

- The North arrow of the drawing

