



Grade 11 PAT

Two possible freehand drawings

Developed by: PC Viljoen
Senior Educational Specialist for
Engineering Graphics and Design
Free State Province

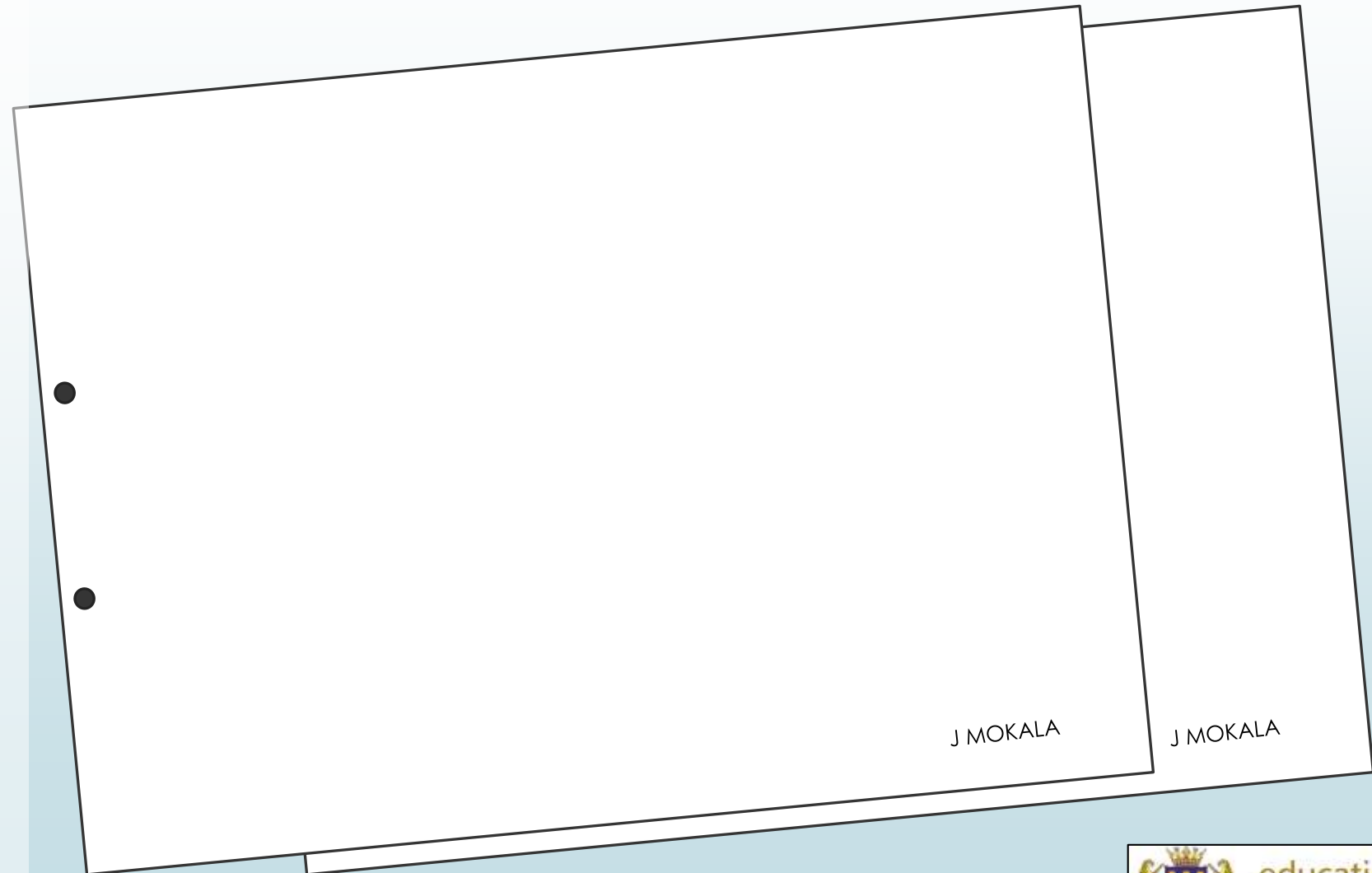


PAT Strategies

- ▶ Use two of the 7 x A3 pages received, for the following.

PAT Strategies

- ▶ 2 x A3 pages is for the **freehand drawings** (Only the learner's initials and surname and no frame is required)



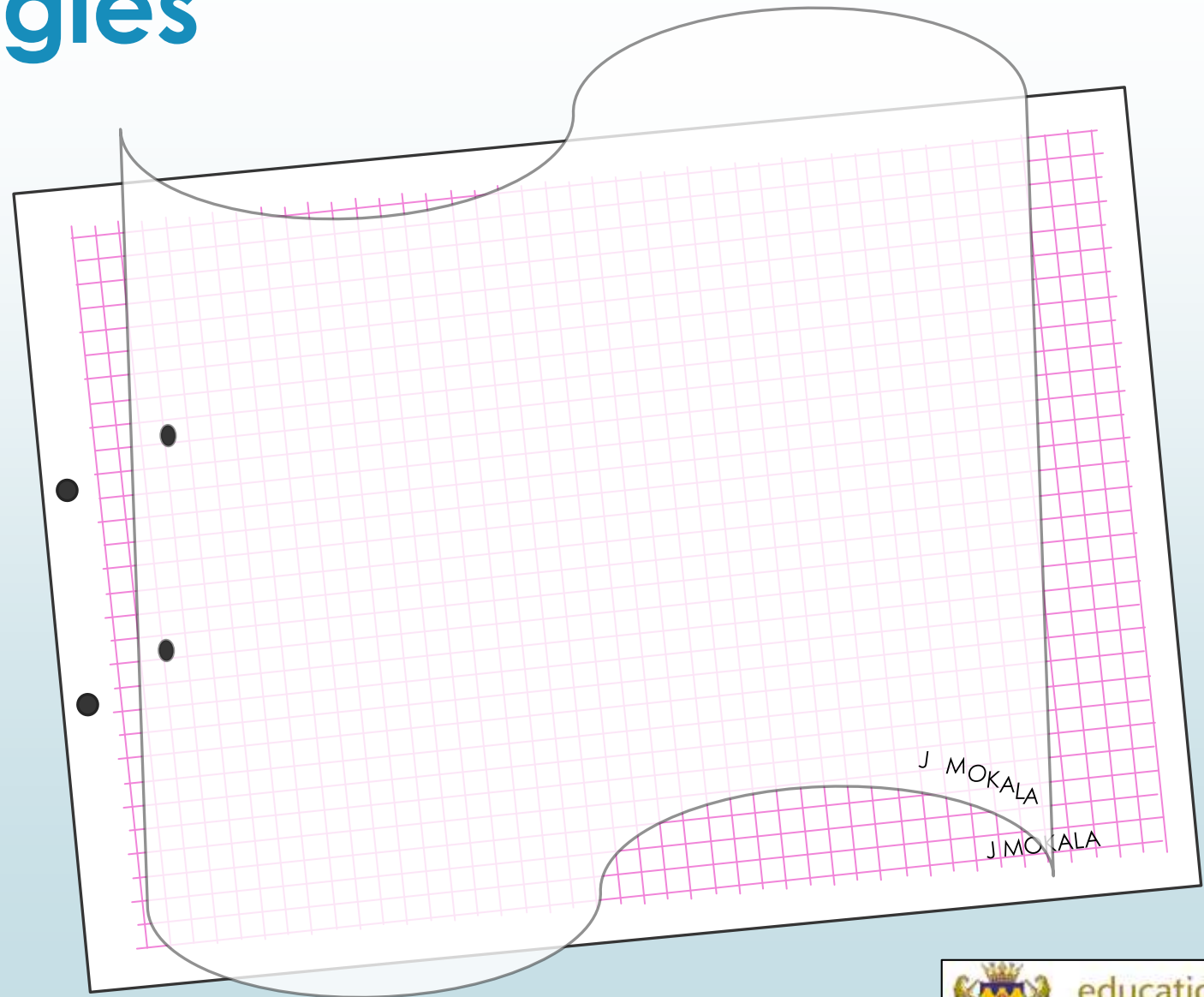
PAT Strategies

- ▶ Use the prepared A3 grid page as evidence for the method used for the freehand drawing



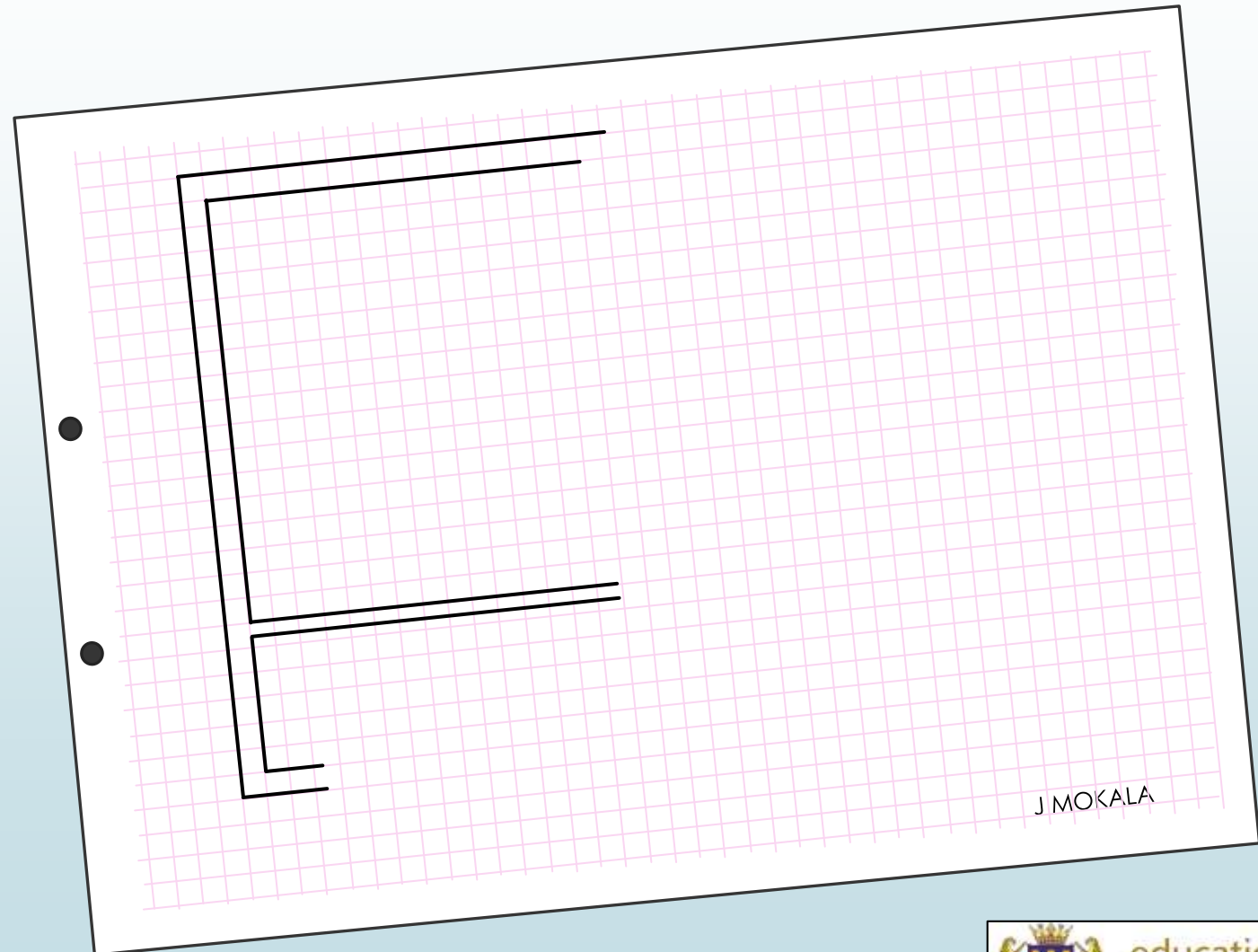
PAT Strategies

- Slide the grid page behind the clean freehand page to enable an accurate freehand drawing.



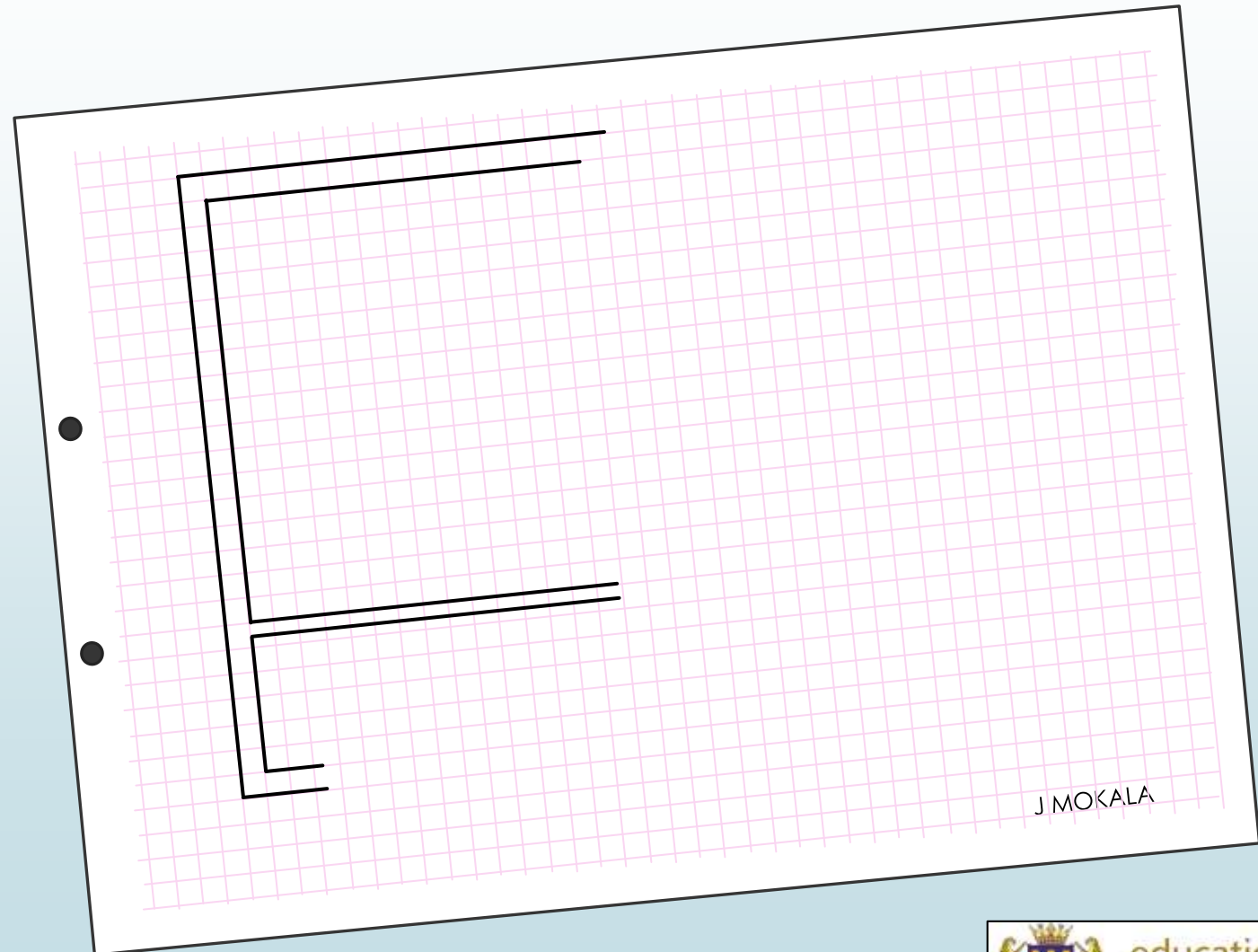
PAT Strategies

- Draw **different freehand solutions** on each of the two A3 pages



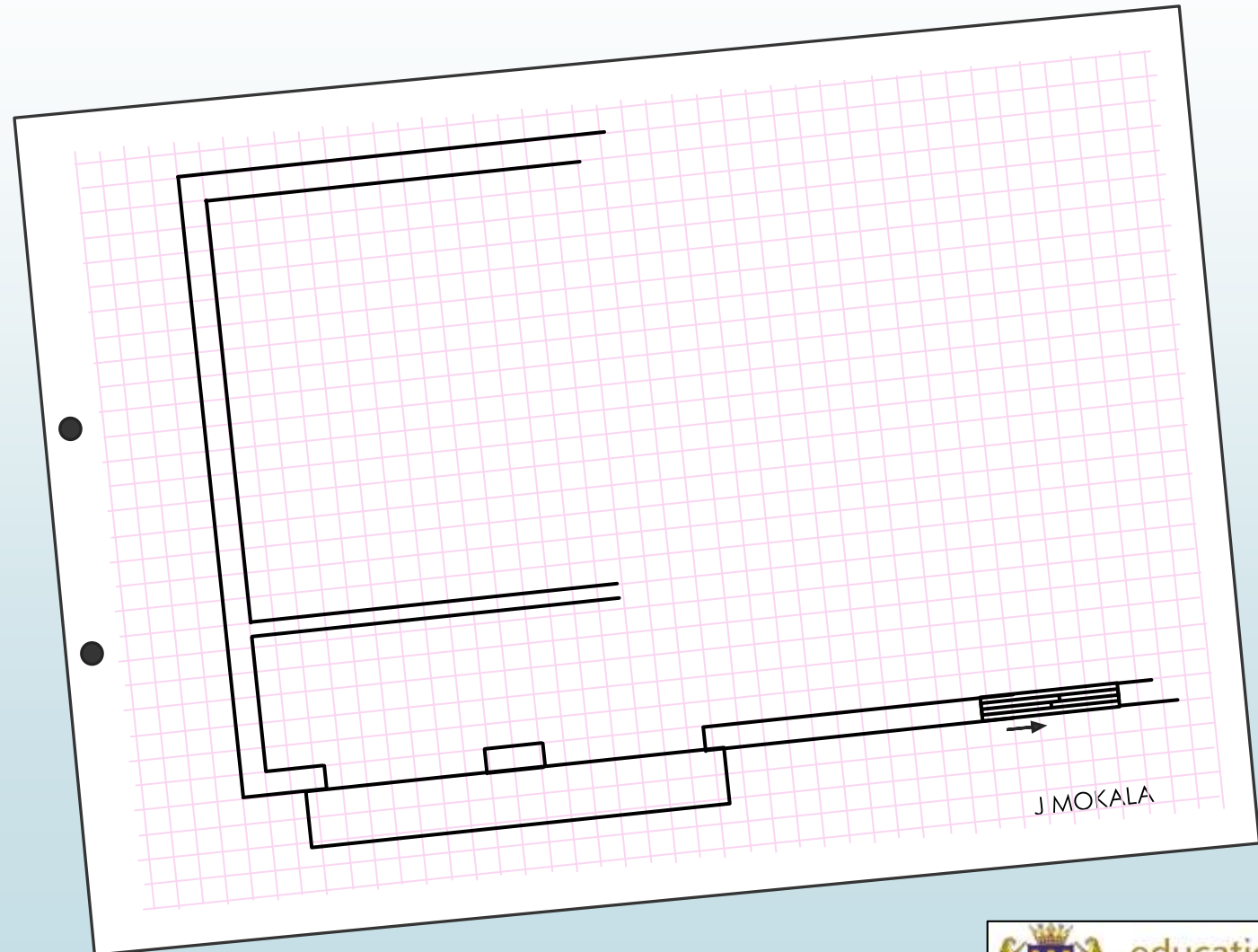
PAT Strategies

- Include:
 - ALL the building features & fixtures
 - Differentiate between **load bearing walls & non-load bearing walls**



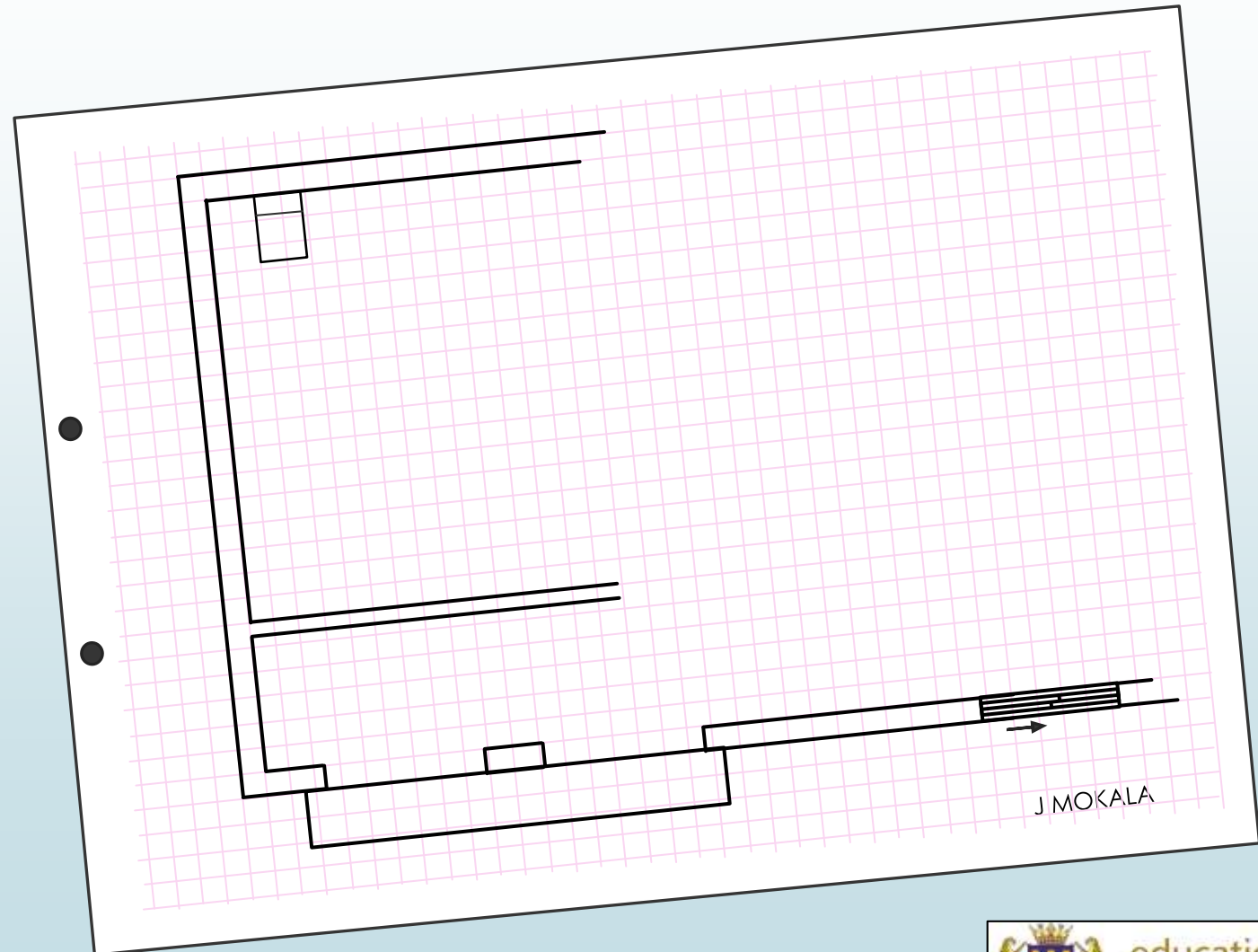
PAT Strategies

- Include:
 - The sliding doors



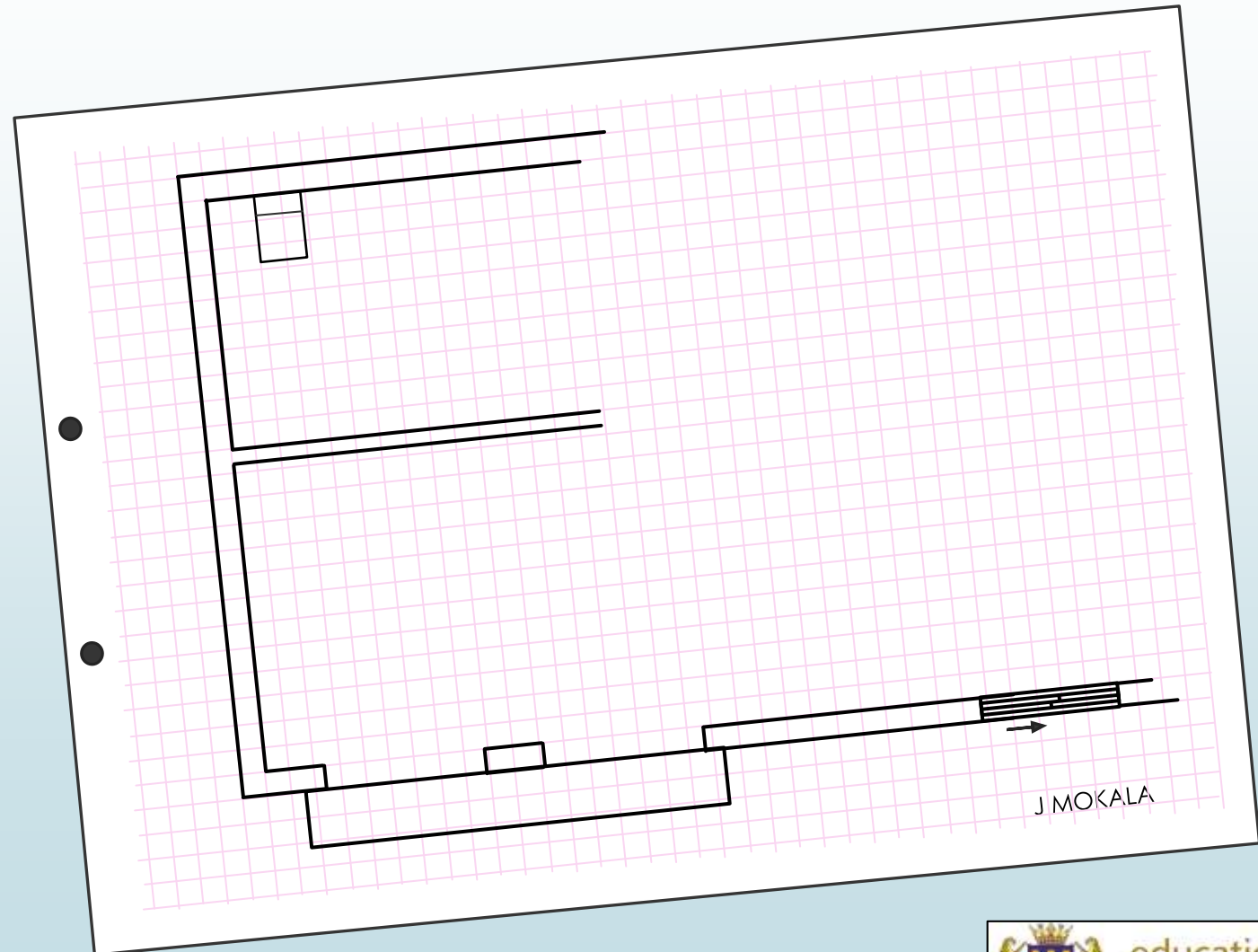
PAT Strategies

- Include:
 - Correct presentation of all building features according to SANS 10143



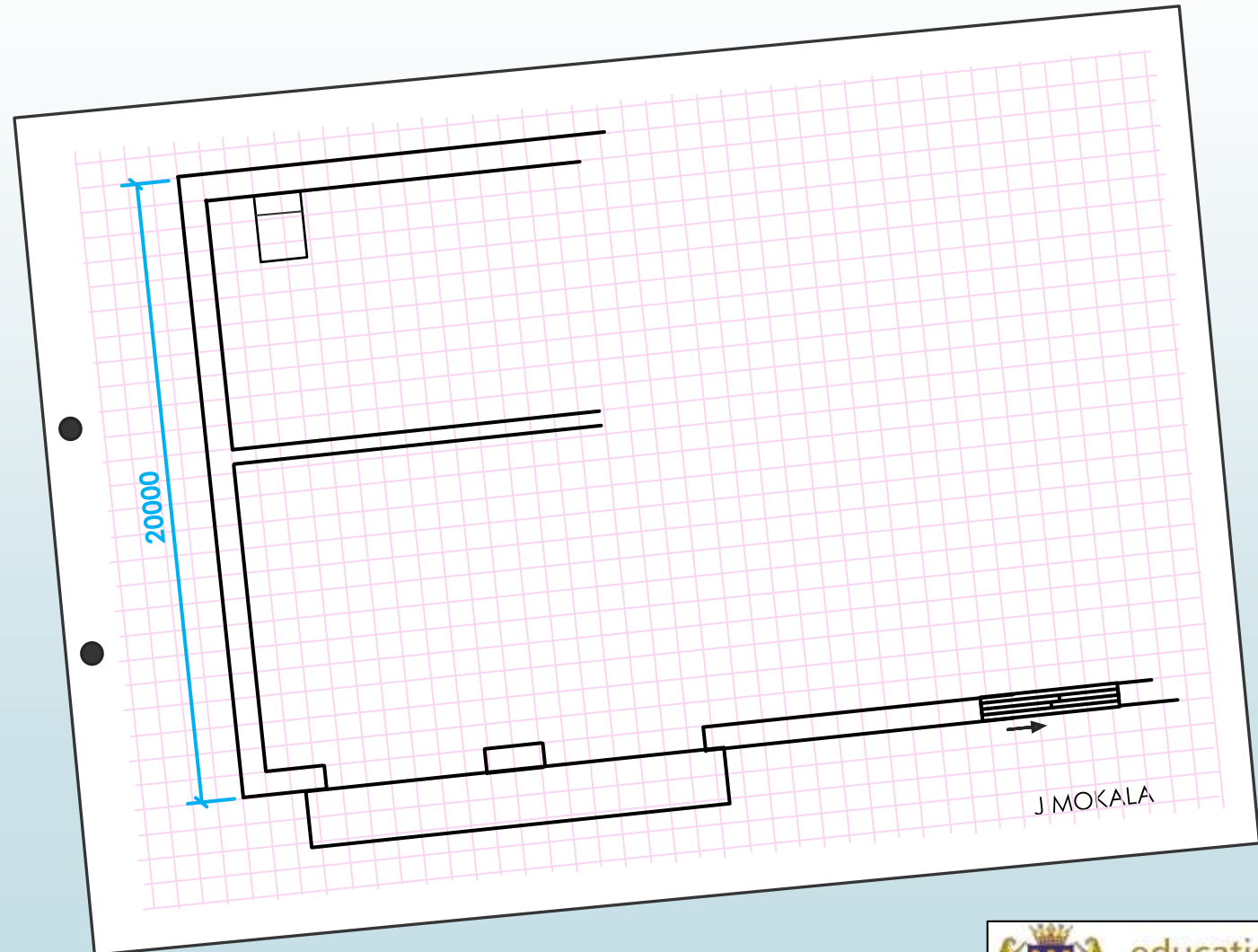
PAT Strategies

- Include:
 - Relative size/proportion of features to each other (use the size of a WC towards a door width)



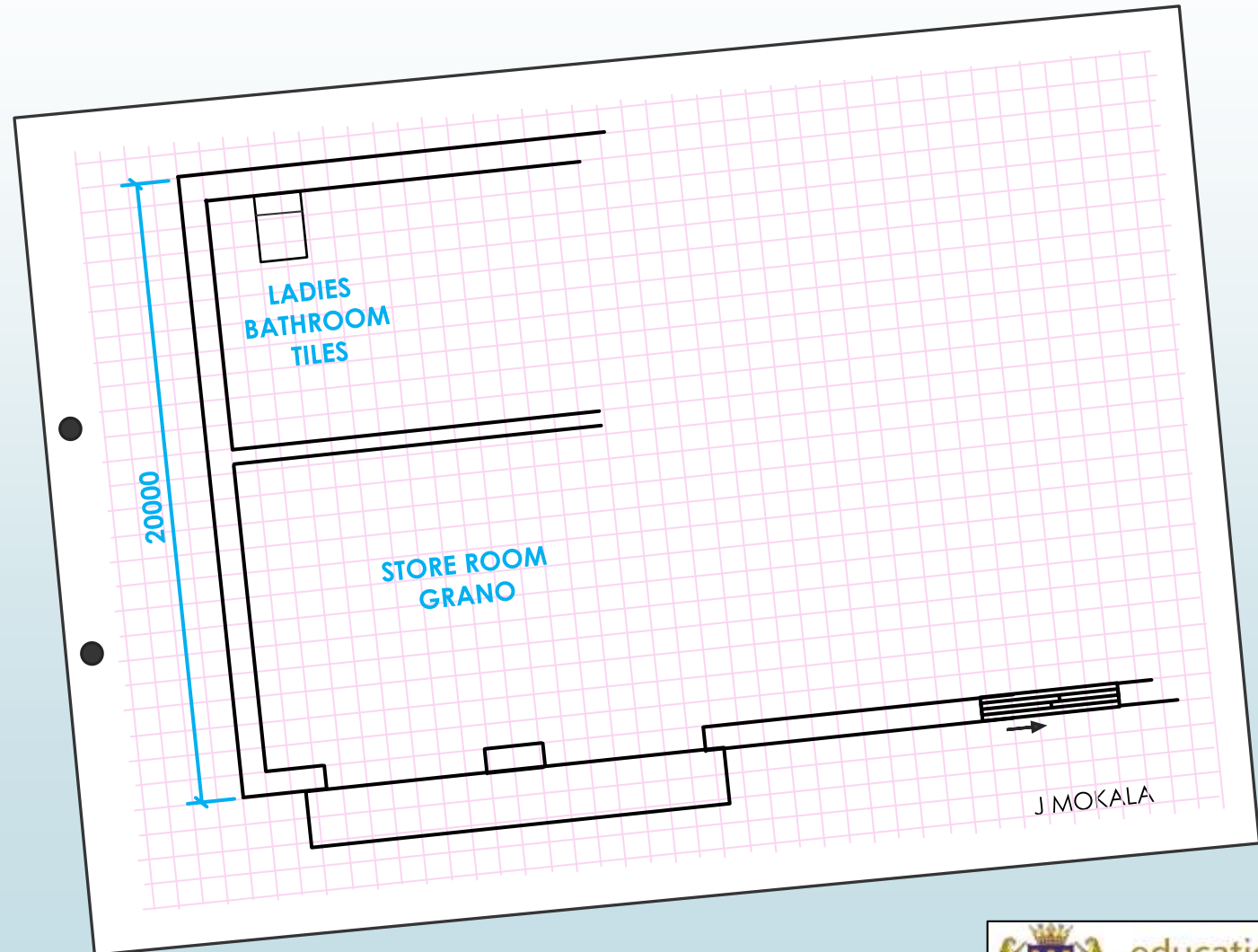
PAT Strategies

- Include:
 - The primary dimensions.



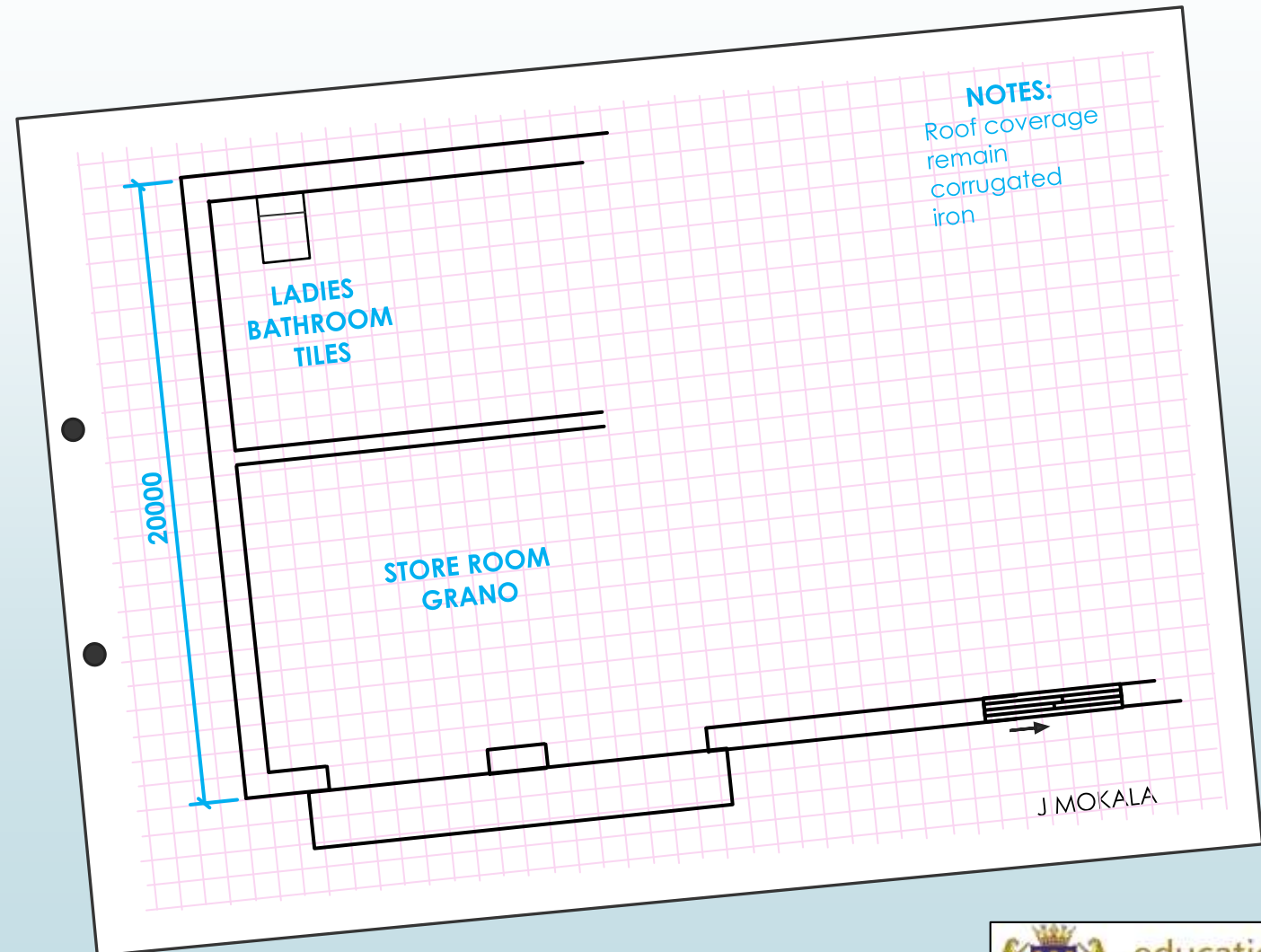
PAT Strategies

- Include:
 - Labels.



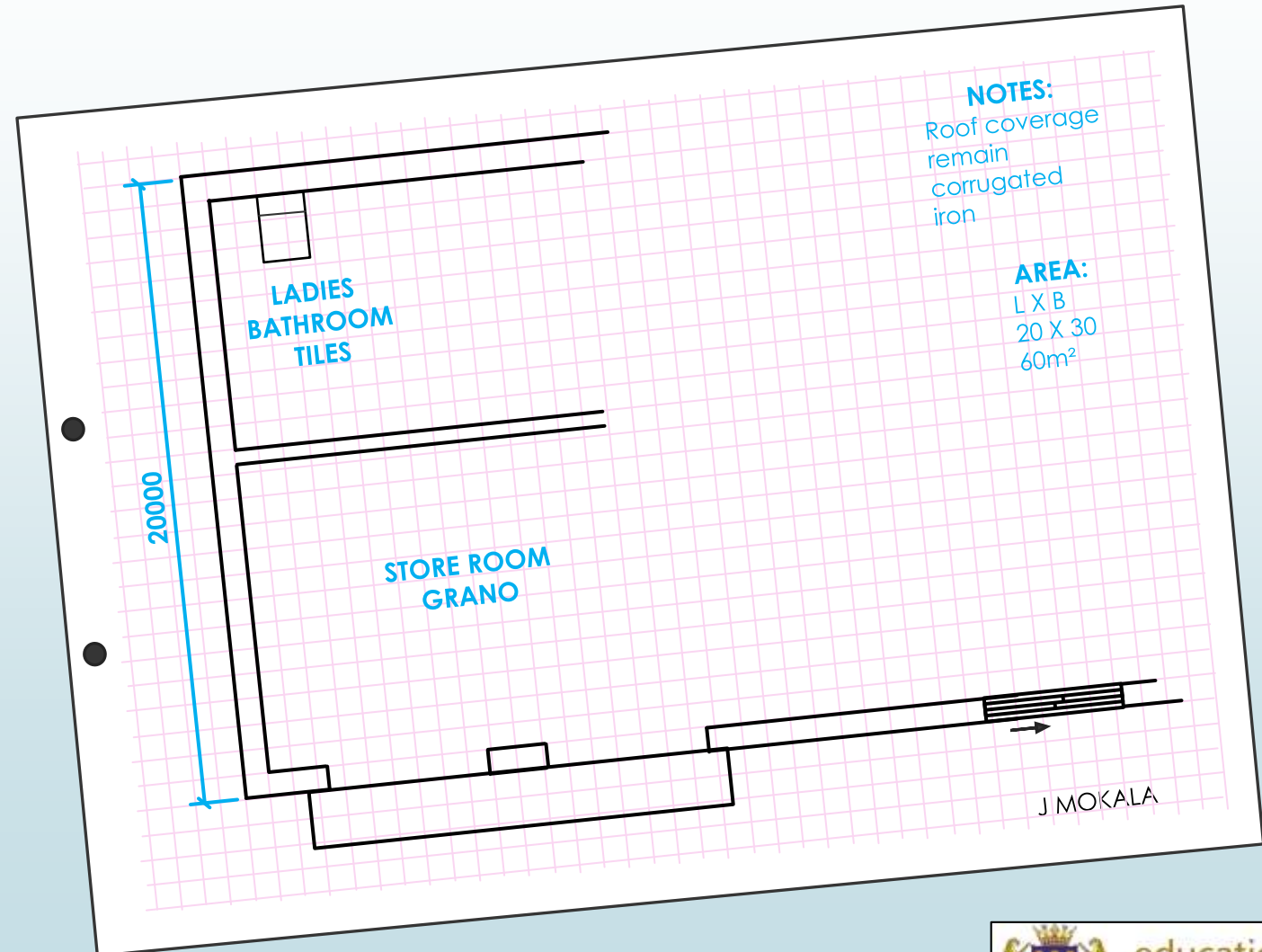
PAT Strategies

- Include:
- Notes.



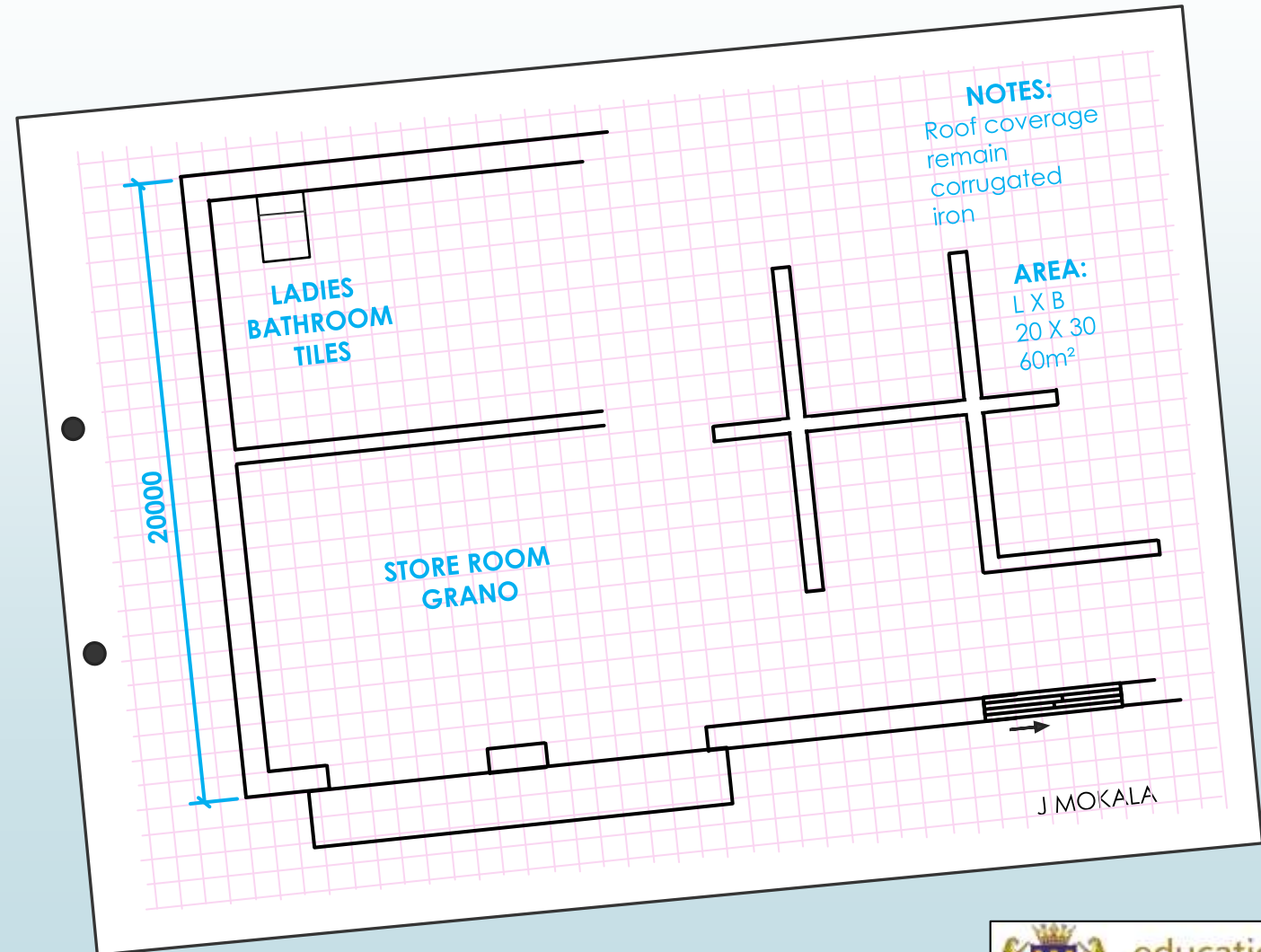
PAT Strategies

- Include:
 - The calculation of the total area



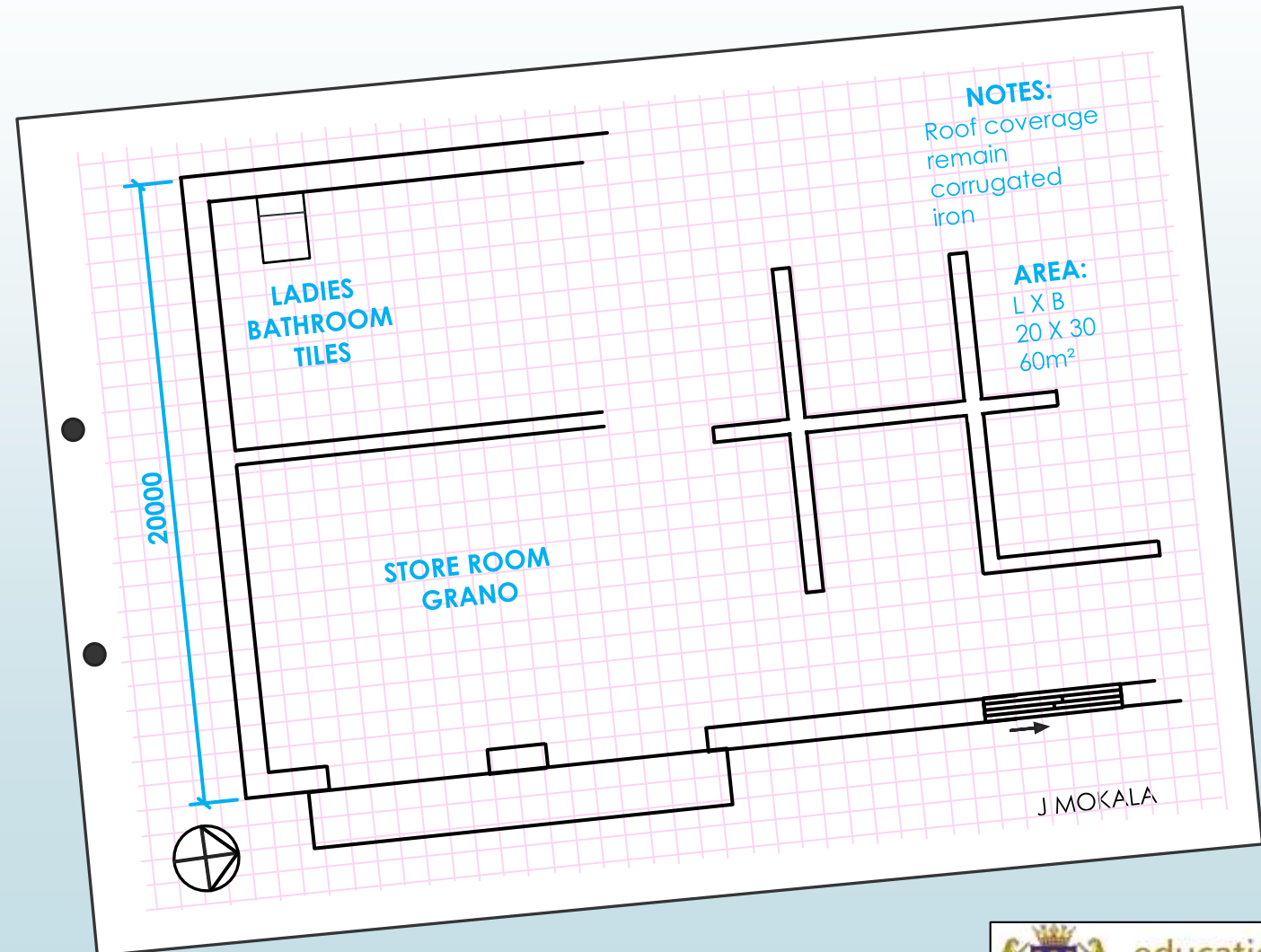
PAT Strategies

- Include:
 - Design: functionality and effective utilization of space (Comparing bathrooms close to lounge/kitchen).



PAT Strategies

- Include:
 - The North point.



PAT Strategies

- Learners **will be evaluated** on the information listed on the Assessment Criteria and Checklist sheet (grade 11 Civil PAT p 3-6)

3 Generate TWO detailed self-explanatory FREEHAND DRAWINGS as possible solutions.					
<u>No</u>	<u>Assignment</u>	<u>Mark</u>	<u>Learner mark</u>	<u>Date of completion</u>	<u>Remarks</u>
3.1	Freehand drawing with building features.	2			
3.2	Correct presentation of all fixtures according to SANS 10143	2			
3.3	Relative size/proportion of features to each other.	2			
3.4	Supply each free hand drawing with the necessary labels on the required floor plan.	1			
3.5	Supply each free hand drawing with the necessary dimensions on the required floor plan.	1			
3.6	Supply each free hand drawing with the necessary notes on the required floor plan.	1			
3.7	Area calculation clearly shown and within constraint	2			
3.8	Supply the North point at each drawing.	2			
3.9	Design. Functionality and effective utilisation of space .	2			

PAT Strategies

- Learners can use the Assessment Criteria and Checklist sheet (grade 11 Civil p 3-6) to complete the **management plan** by supplying the dates of completion

3 Generate TWO detailed self-explanatory FREEHAND DRAWINGS as possible solutions.					
<u>No</u>	<u>Assignment</u>	<u>Mark</u>	<u>Learner mark</u>	<u>Date of completion</u>	<u>Remarks</u>
3.1	Freehand drawing with building features.	2			
3.2	Correct presentation of all fixtures according to <i>SANS 10143</i>	2			
3.3	Relative size/proportion of features to each other.	2			
3.4	Supply each free hand drawing with the necessary labels on the required floor plan.	1			
3.5	Supply each free hand drawing with the necessary dimensions on the required floor plan.	1			
3.6	Supply each free hand drawing with the necessary notes on the required floor plan.	1			
3.7	Area calculation clearly shown and within constraint.	2			
3.8	Supply the North point at each drawing.	2			
3.9	Design: Functionality and effective utilisation of space .	2			

PAT Strategies

- Let the learners do **self evaluation** according to the Assessment Criteria and Checklist sheet as they progress with each phase (grade 11 Civil p 3-6)

3 Generate TWO detailed self-explanatory FREEHAND DRAWINGS as possible solutions.					
<u>No</u>	<u>Assignment</u>	<u>Mark</u>	<u>Learner mark</u>	<u>Date of completion</u>	<u>Remarks</u>
3.1	Freehand drawing with building features.	2			
3.2	Correct presentation of all fixtures according to <i>SANS 10143</i>	2			
3.3	Relative size/proportion of features to each other.	2			
3.4	Supply each free hand drawing with the necessary labels on the required floor plan.	1			
3.5	Supply each free hand drawing with the necessary dimensions on the required floor plan.	1			
3.6	Supply each free hand drawing with the necessary notes on the required floor plan.	1			
3.7	Area calculation clearly shown and within constraint.	2			
3.8	Supply the North point at each drawing.	2			
3.9	Design: Functionality and effective utilisation of space .	2			

PAT Strategies

- File in either A4 or A3 format, all current pages of the PAT in the correct sequence
- Use dividers between the topics.

