

### DOOR AND WINDOW SCHEDULE

**WINDOW NOTES:**  
 A = OPEN SIDE  
 B = FIXED PANEL

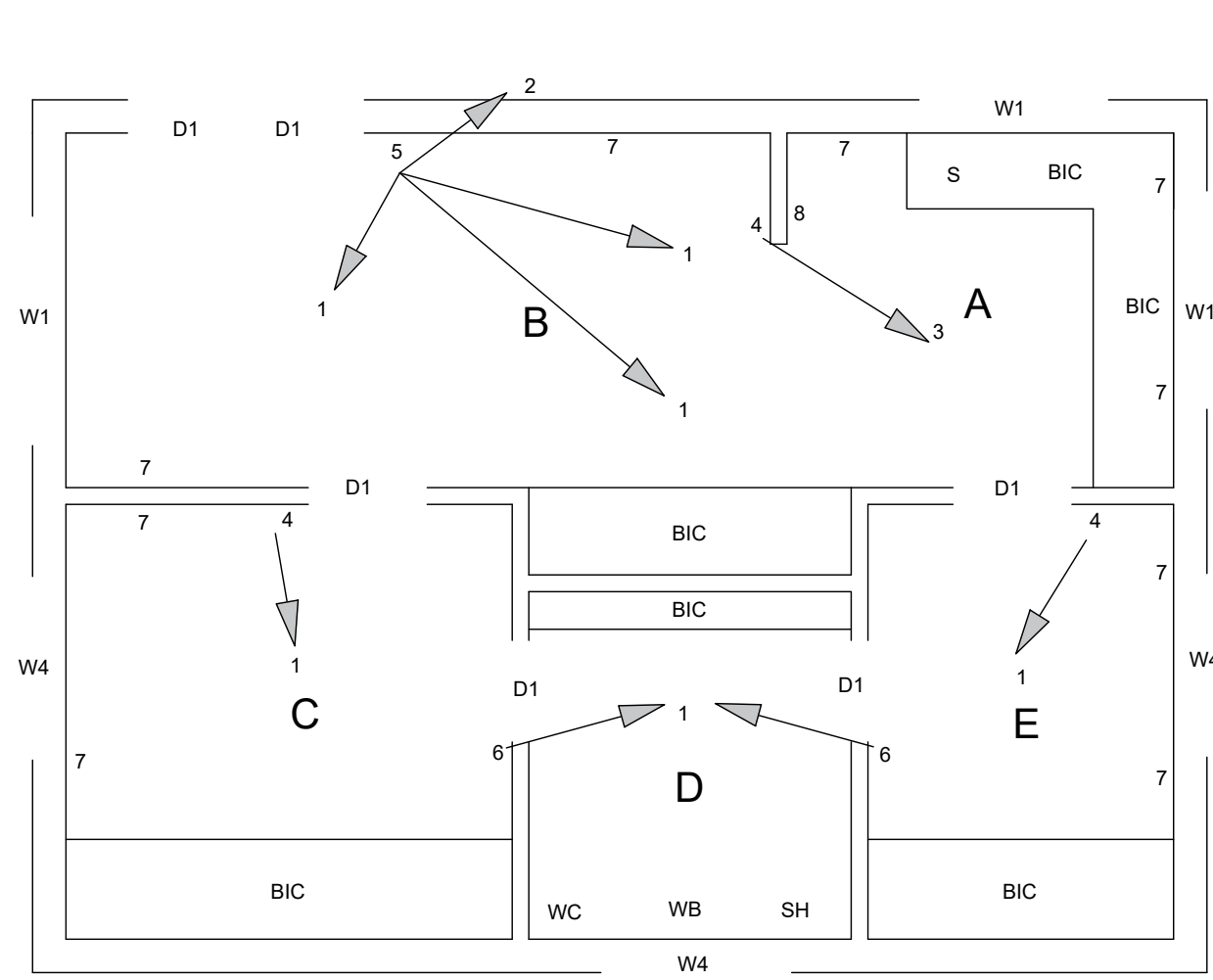
**NOTE:**  
 150 x 25 mm FIBRE-CEMENT SILL UNDER EACH WINDOW

### FIXTURES

WASH BASIN (WB)  
 TOILET (WC)  
 SHOWER (SH)  
 SINK (S)

### DOORFRAME

### ELECTRICAL SCHEDULE

**INCOMPLET FLOOR PLAN**  
 SCALE 1:70

ROOM DESCRIPTIONS	FIXTURES	ELECTRICAL FEATURES
A. KITCHEN TILE	SH Shower	1. Ceiling mounted light
B. LIVING ROOM WOOD	WB Wash-Basin	2. Wall mounted light
C. BEDROOM 1 CARPET	WC Toilet	3. 2 x 40 W Fluoresced light
D. BATHROOM TILES	S Sink	4. Light Switch - Single pole
E. BEDROOM 2 CARPET	BIC built in cabinet	5. Light Switch - Double pole
		6. Two way switch
		7. Switch Socket Outlet
		8. Distribution board

**QUESTION 4: CIVIL DRAWING**

**Given:**

- The incomplete floor plan of a house showing the outlines of the common brick walls and the positions of all the features, relevant notes and dimensions.
- A table of electrical symbols.
- A door and window schedule.
- Detailed drawings of all the sanitary fixtures.
- According to scale 1:40, the outlines of the floor plan of the house on the answer sheet.

**Instructions:**

- Answer this questions on the answer sheet.
- Use the given incomplete floor plan and complete, according to scale 1:40, the floor plan:

**Specifications:**  
**Show the following features on the drawing:**

- All the walls with hatching detail.
- The doors and windows.
- The graphic symbols and abbreviations of all the sanitary fixtures as indicated on the incomplete floor plan.
- ALL the electrical features as indicated with the numbers on the incomplete floor plan.
- The room descriptions with their finishes in all of the rooms as described by the letters.
- Name the view and indicate the scale.
- Show the north symbol.

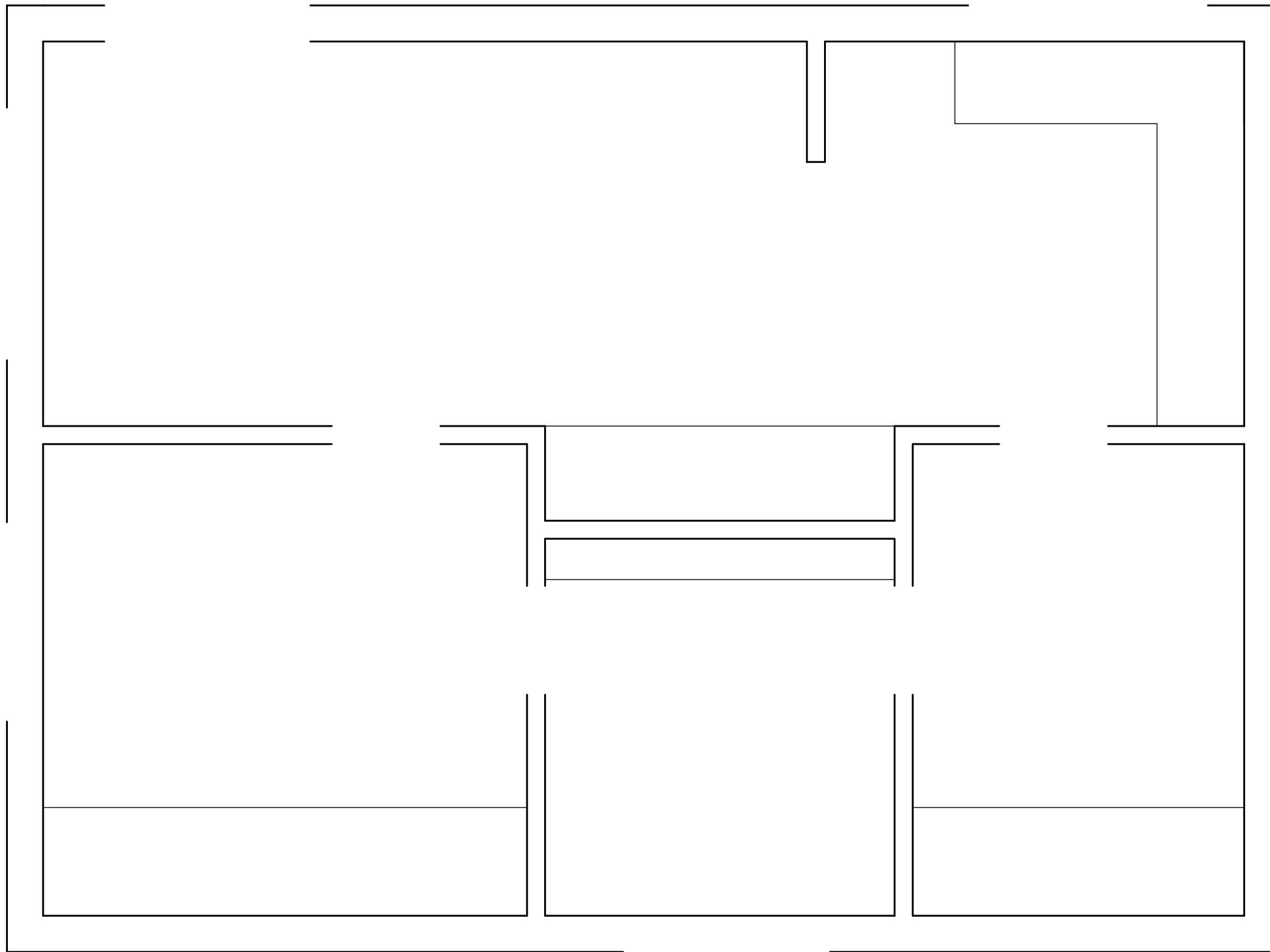
**Note:**  
 All drawings must comply with the graphic symbol and guidelines contained in SANS 10143



**NOTE:**  
 THE ARROW SHOWS THE LIGHT CONNECTION TOWARDS THE SWITCH

CIVIL	ESTIMATED TIME FOR COMPLETION	30 MIN	GRADE 11	INITIALS & SURNAME	TASK 5.4	PAGE 17
	YOUR TIME FOR COMPLETION	MIN				

STAPEL



ASSESSMENT CRITERIA				
FLOOR PLAN				
1	DOORS	7		
2	WINDOWS	15		
3	FIXTURES	13		
4	ELECTRICAL	17		
5	HATCHING	6		
6	LABELS	7		
<b>TOTAL</b>		<b>65</b>		



CIVIL WORK DRAWING

ESTIMATED TIME FOR COMPLETION  
YOUR TIME FOR COMPLETION

30 MIN  
MIN

GRADE  
**11**

INITIALS &  
SURNAME

TASK  
**5.4**

PAGE  
**18**