

**QUESTION 2: INTERPENETRATION AND DEVELOPMENT**

**Given:**

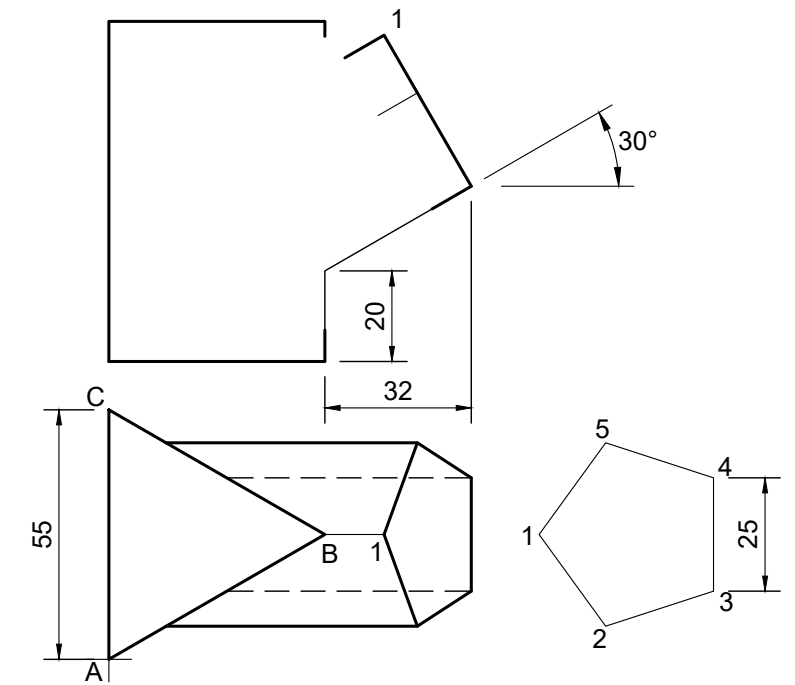
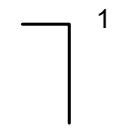
- The incomplete front view and the top view of a pentagonal pipe has been shaped to fit around an equilateral triangular pipe.
- The axes of both pipes lie in a common vertical plane.
- The auxiliary view of the pentagonal pipe.
- The start position of point A on the drawing sheet.

**Instructions:**

Draw to scale 1 : 1, the following:

- 2.1 The given top view
- 2.2 The complete front view, clearly showing the curve of interpenetration
- 2.3 Develop the surface of the equilateral triangular pipe. Make A to B the start position.
- 2.4 Develop the surface of the pentagonal pipe. Make 1 to 2 the start position.

Show all hidden detail, the necessary constructions and show all the fold lines. **[37]**



ASSESSMENT CRITERIA			
1	TOP VIEW	5.5	
2	FRONT VIEW	7.5	
4	DEVELOPMENT TRIANGLE	11	
5	DEVELOPMENT PENTAGON	13	
PENALTIES (-)			
<b>TOTAL</b>		<b>37</b>	



INTERPENETRATION & DEVELOPMENTS	ESTIMATED TIME FOR COMPLETION	35 MIN	GRADE <b>11</b>	NAME & SURNAME		TASK	PAGE
	YOUR TIME OF COMPLETION	MIN				8.5	35