

QUESTION 2: INTERPENETRATION AND DEVELOPMENT

Given:

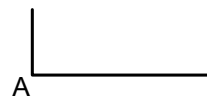
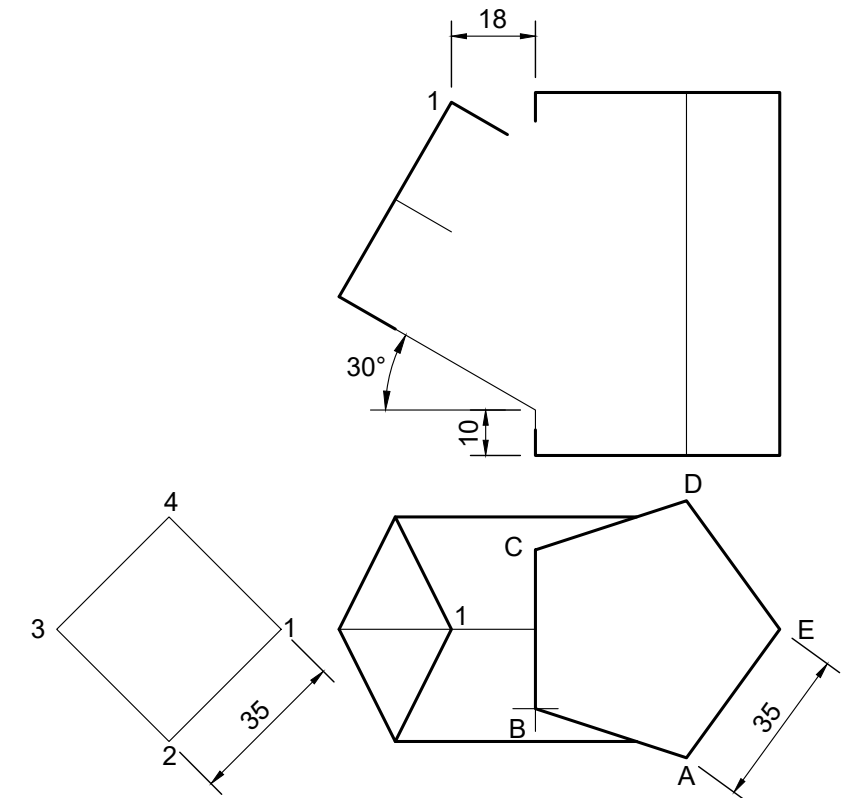
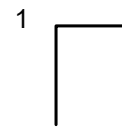
- The incomplete front view and the top view of a square pipe has been shaped to fit around a regular pentagonal pipe.
- The axes of both pipes lie in a common vertical plane.
- The auxiliary view of the square pipe.
- The start position point B on the drawing sheet.

Instructions:

Draw to scale 1 : 1, the following:

- 2.1 The given top view
- 2.2 The complete front view, clearly showing the curve of interpenetration
- 2.3 Develop the surface of the regular pentagonal pipe. Make A to B the start position.
- 2.4 Develop the surface of the square pipe. Make 1 to 2 the start position.

Show all hidden detail, the necessary constructions and show all the fold lines. **[43]**



ASSESSMENT CRITERIA			
1	TOP VIEW	8	
2	FRONT VIEW	8.5	
4	DEVELOPMENT PENTAGON	13	
5	DEVELOPMENT SQUARE	13.5	
PENALTIES (-)			
TOTAL		43	



INTERPENETRATION & DEVELOPMENTS	ESTIMATED TIME FOR COMPLETION	35 MIN	GRADE 11	NAME & SURNAME		TASK	PAGE
	YOUR TIME OF COMPLETION	MIN				8.6	36