

QUESTION 2: INTERPENETRATION AND DEVELOPMENT

Given:

- The incomplete front view and the top view of a regular pentagonal pipe that has been shaped to fit around a right regular hexagonal pipe.
- The axes of both prisms lie in a common vertical plane.
- The auxiliary view of the hexagonal pipe.
- The position of point O on the drawing sheet.

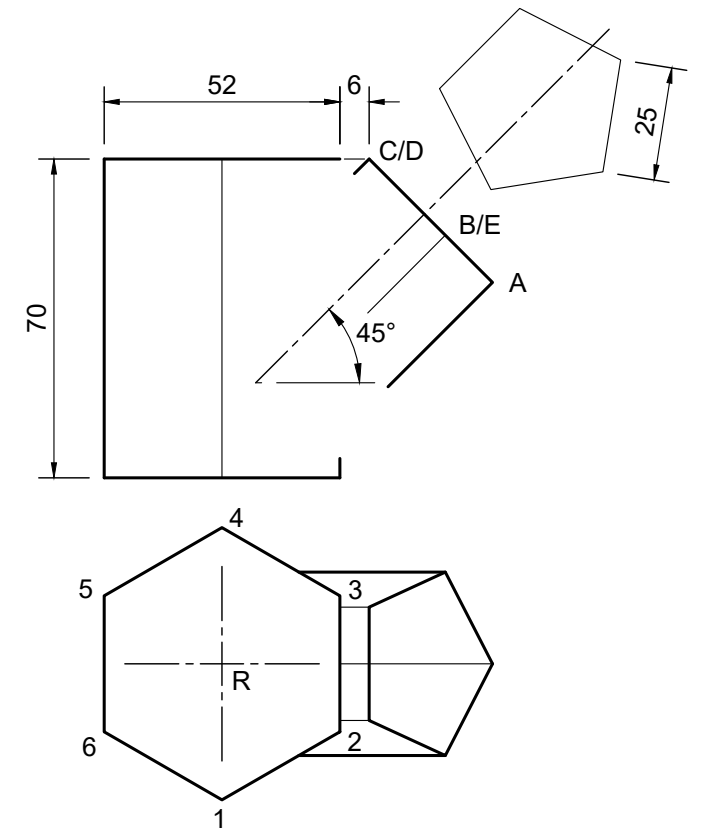
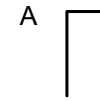
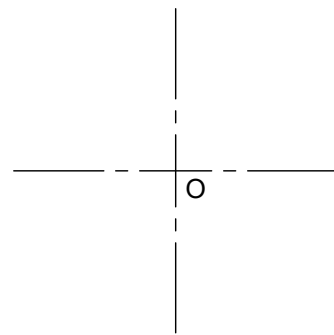
Instructions:

Draw to scale 1 : 1, the following views:

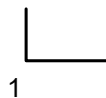
- 2.1 The given top view
- 2.2 The complete front view, clearly showing the curve of interpenetration
- 2.3 The right view. No hidden detail is required.
- 2.4 Develop the surface of the hexagonal pipe. Use point 1 - 2 as the start position.
- 2.5 Develop the surface of the pentagonal pipe. Use point A as the start position.

Show all construction lines and fold lines.

[64]



ASSESSMENT CRITERIA			
1	TOP VIEW	6.5	
2	FRONT VIEW	9	
3	LEFT VIEW	19.5	
4	DEVELOPMENT HEXAGON	15	
5	DEVELOPMENT SQUARE	14	
PENALTIES (-)			
TOTAL		64	



INTERPENETRATION & DEVELOPMENTS	ESTIMATED TIME FOR COMPLETION	35 MIN	GRADE 11	NAME & SURNAME		TASK 8.7	PAGE 37
	YOUR TIME OF COMPLETION	MIN					