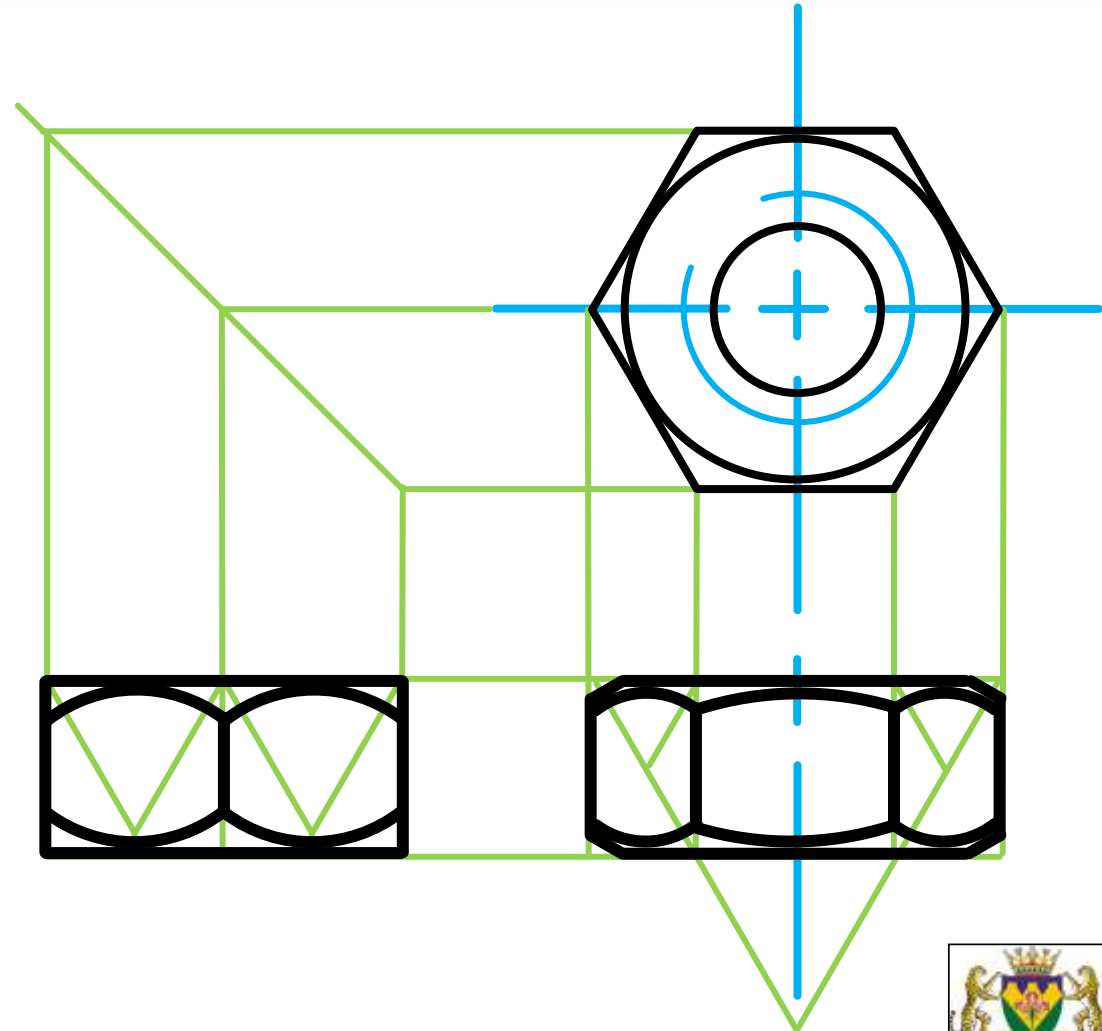


Principles of Mechanical Drawings – PRESENTATION OF COMMON FEATURES

Developed by: PC Viljoen
Senior Educational Specialist for
Engineering Graphics and Design
Free State Province

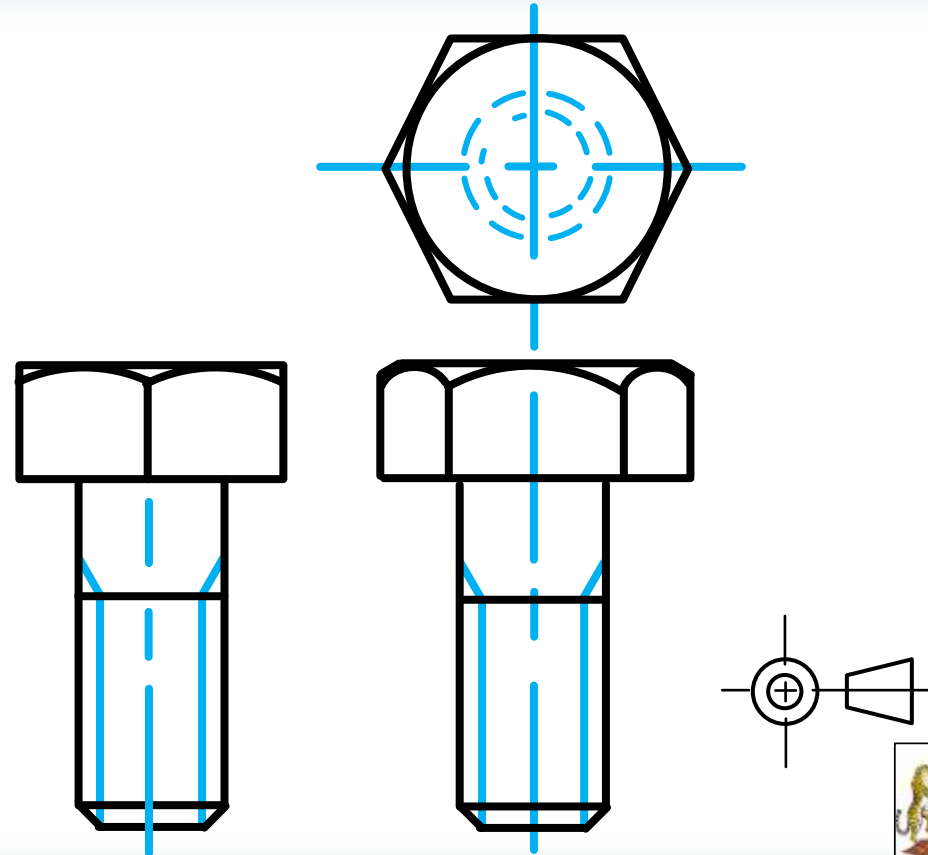
Presentation of Common Features

- The conventional representation of a **nut**.



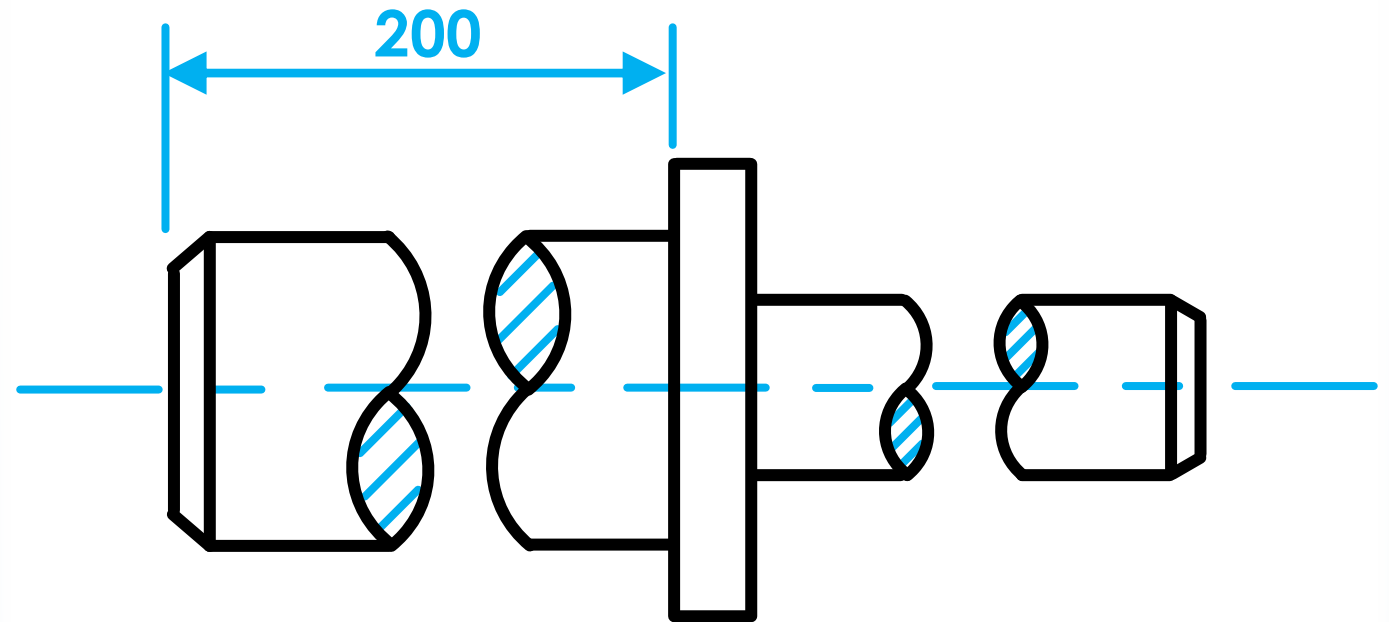
Presentation of Common Features

- The conventional representation of a **bolt**.



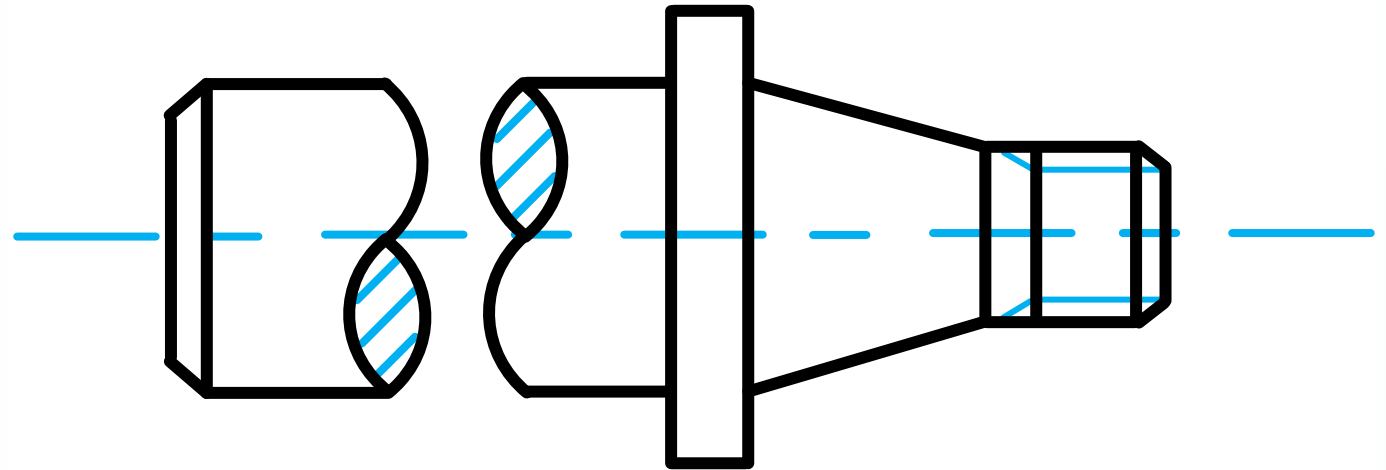
Presentation of Common Features

- The conventional representation of **interrupted view** where the too long shaft has been reduced.



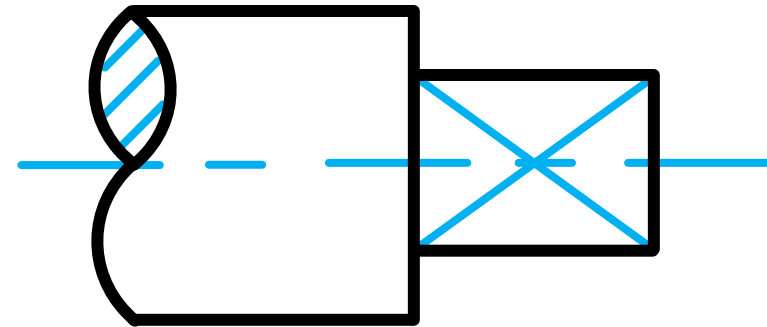
Presentation of Common Features

- A representation of a **tapered shaft**.

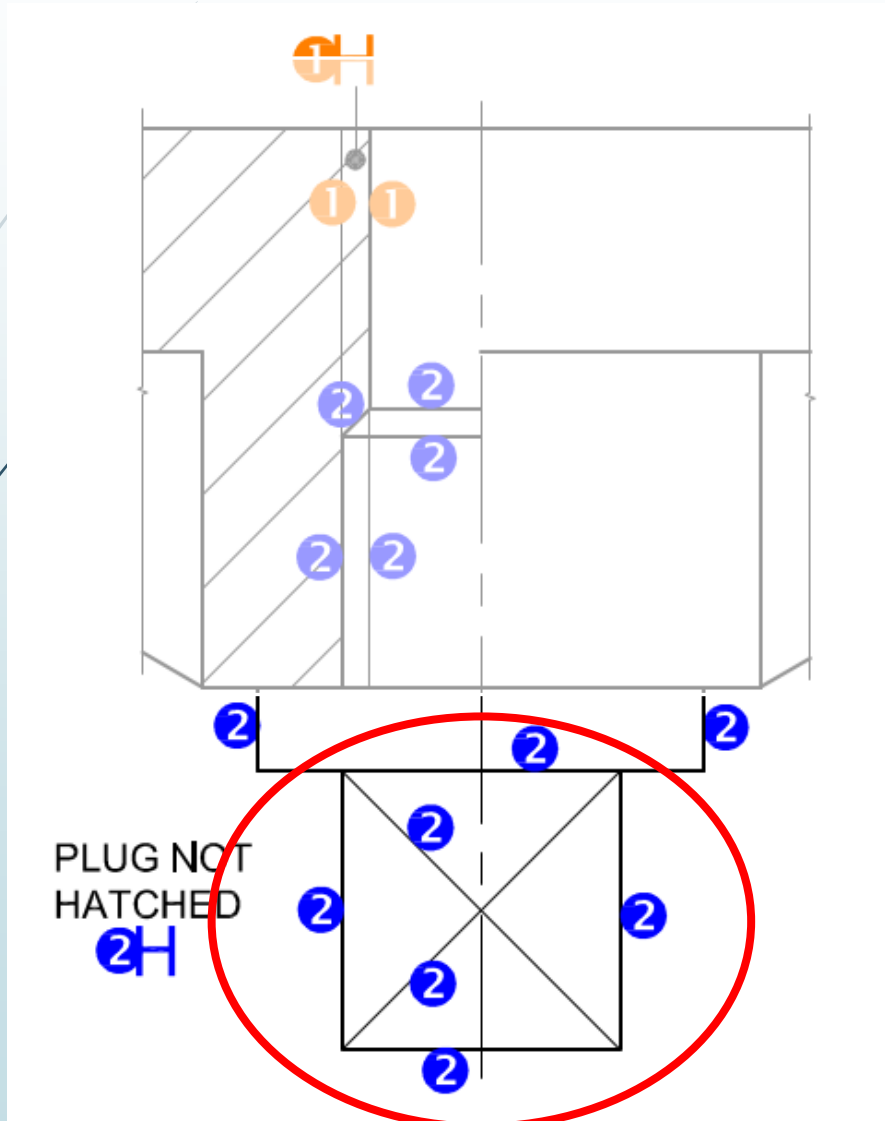


Presentation of Common Features

- The conventional representation of a **square on a shaft**.



Presentation of Common Features



- Asked as question:
 - 2019

Presentation of Common Features

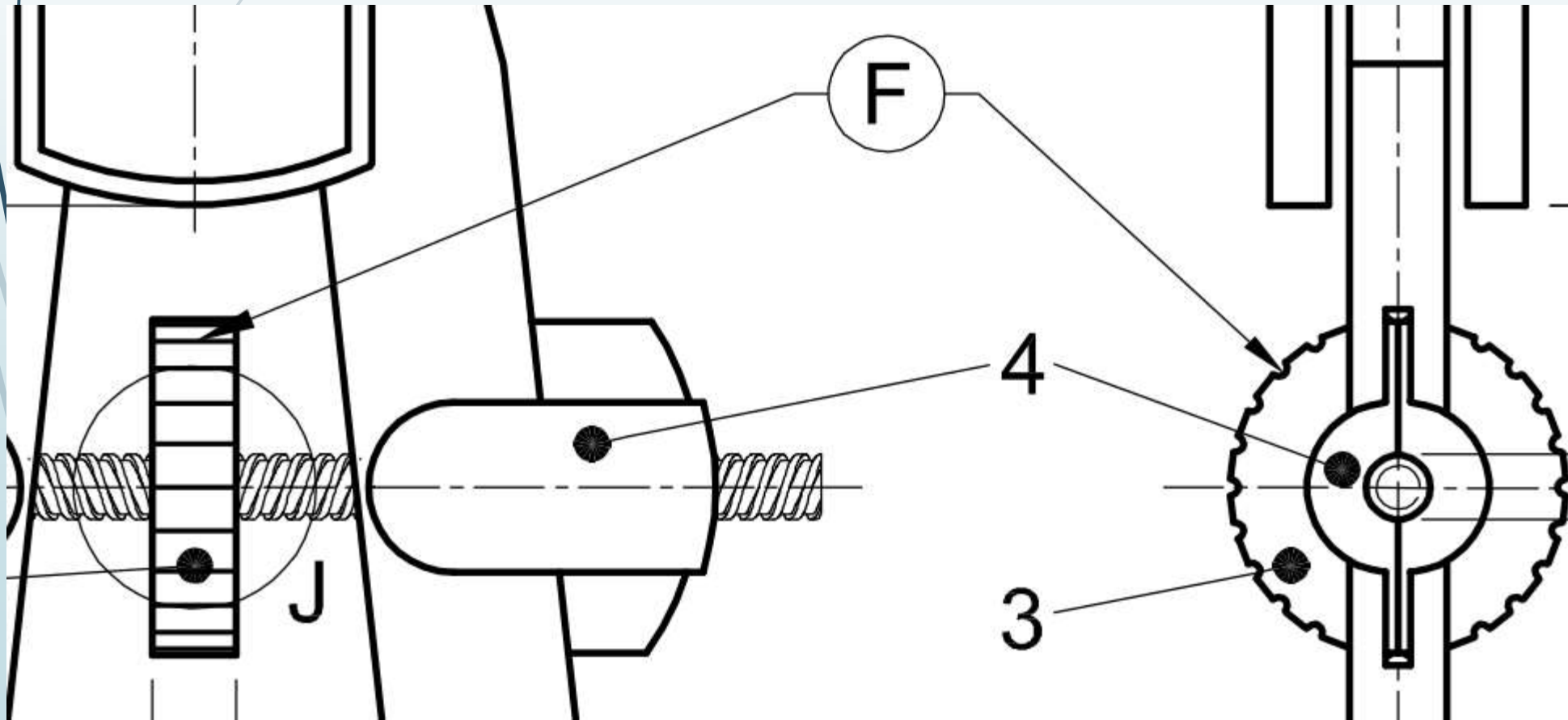
- The conventional representation of **parallel knurling**.



Presentation of Common Features

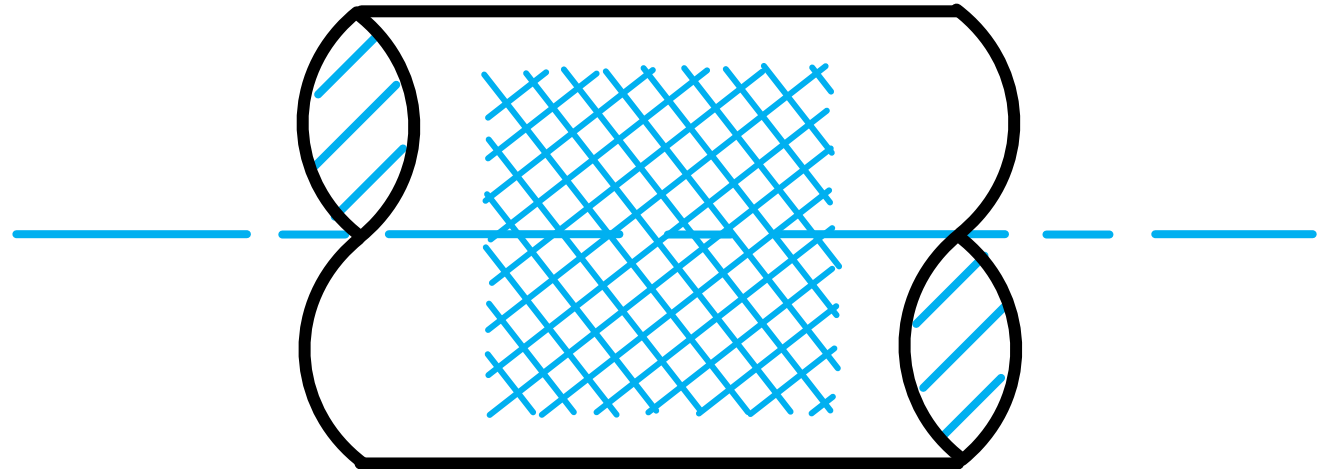
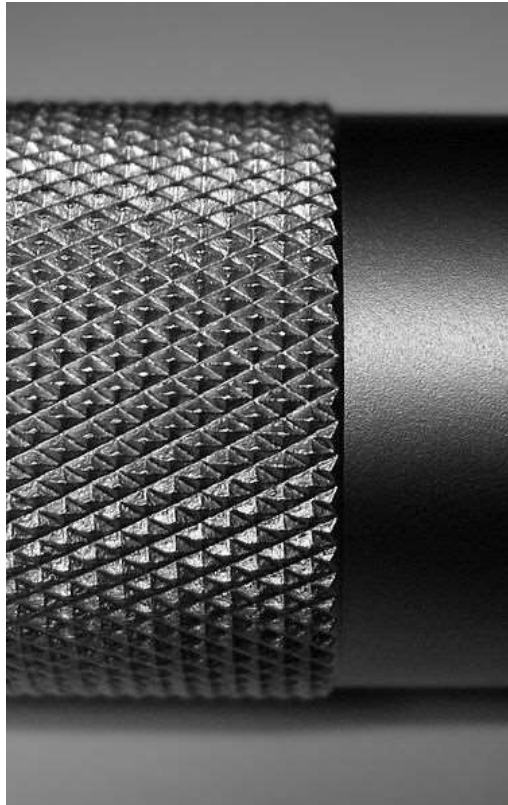
► Asked as question:

► 2019



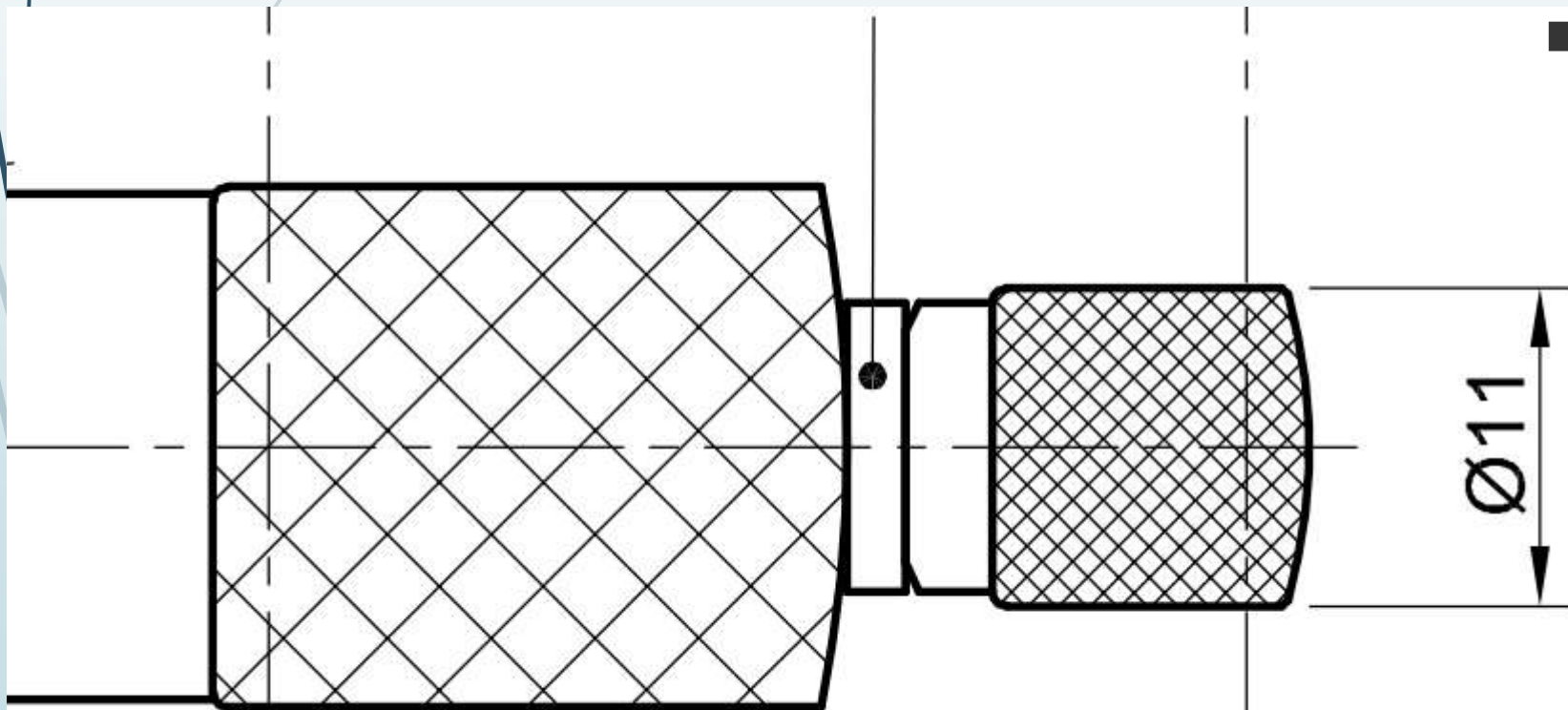
Presentation of Common Features

- The conventional representation of **diamond knurling**.



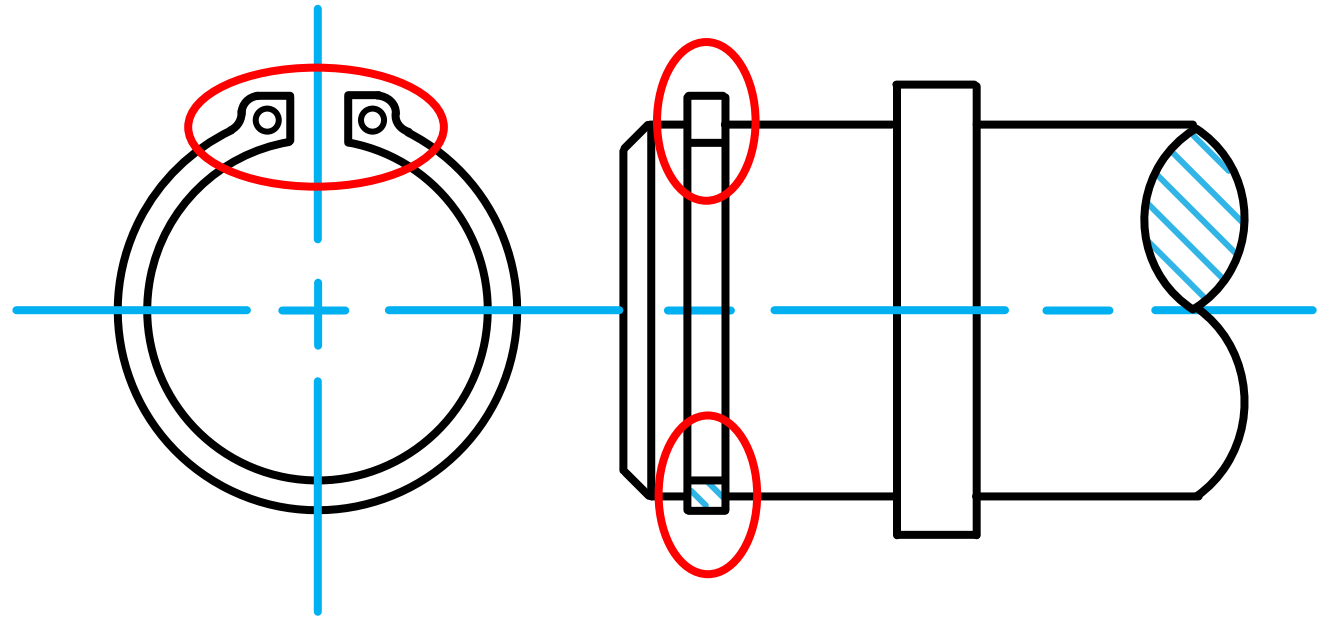
Presentation of Common Features

- ▶ Asked as question:
 - ▶ 2018
 - ▶ 2019



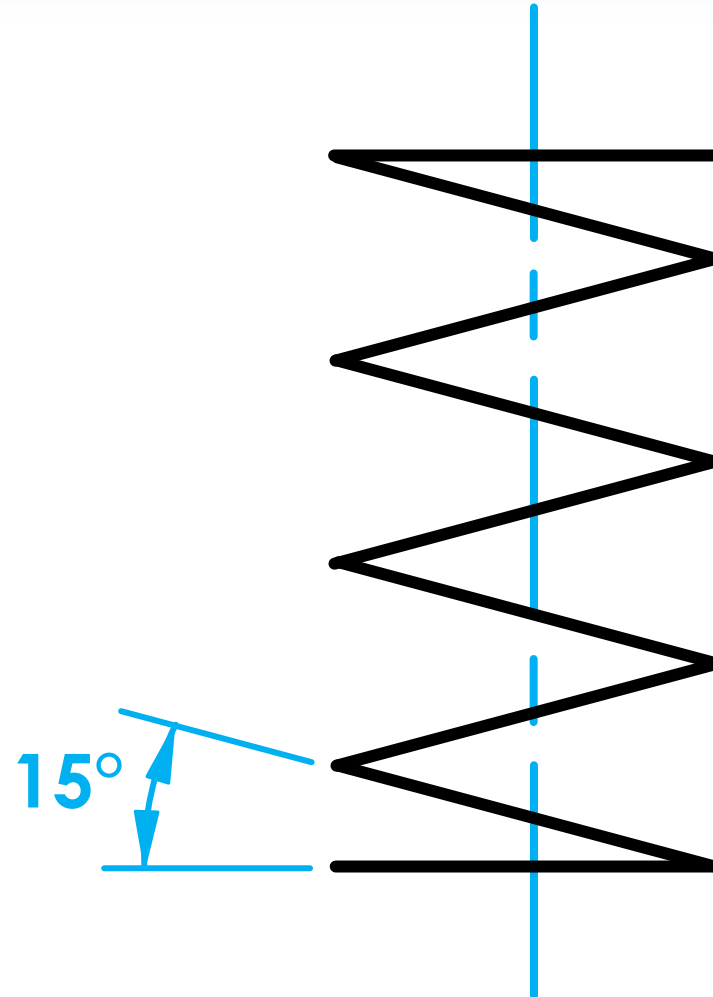
Presentation of Common Features

- ▶ A **circlip** should only be hatched on the bottom end.



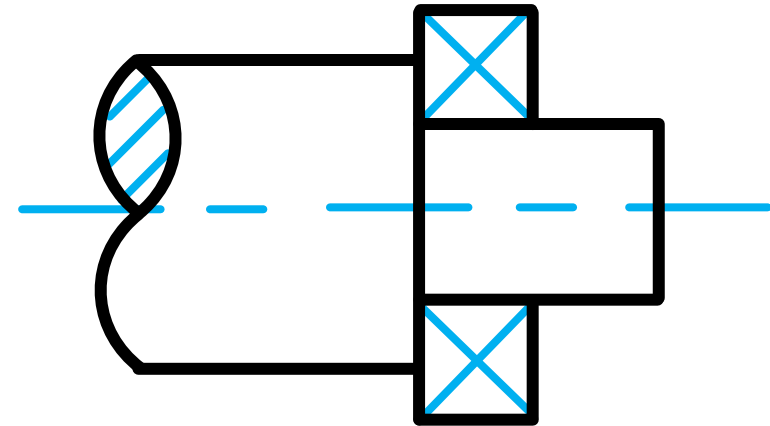
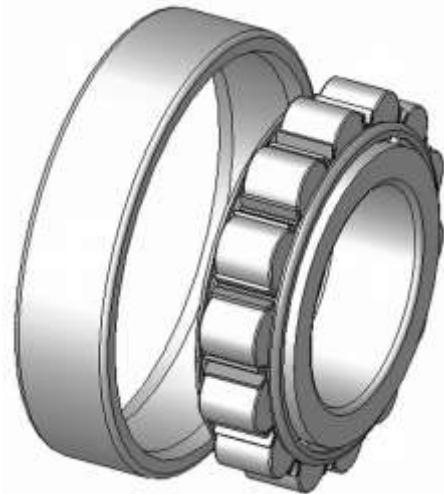
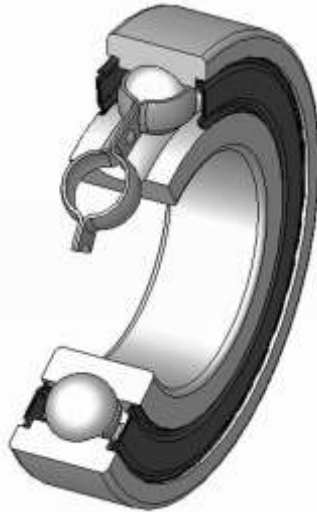
Presentation of Common Features

- The conventional representation of a **helical spring**.



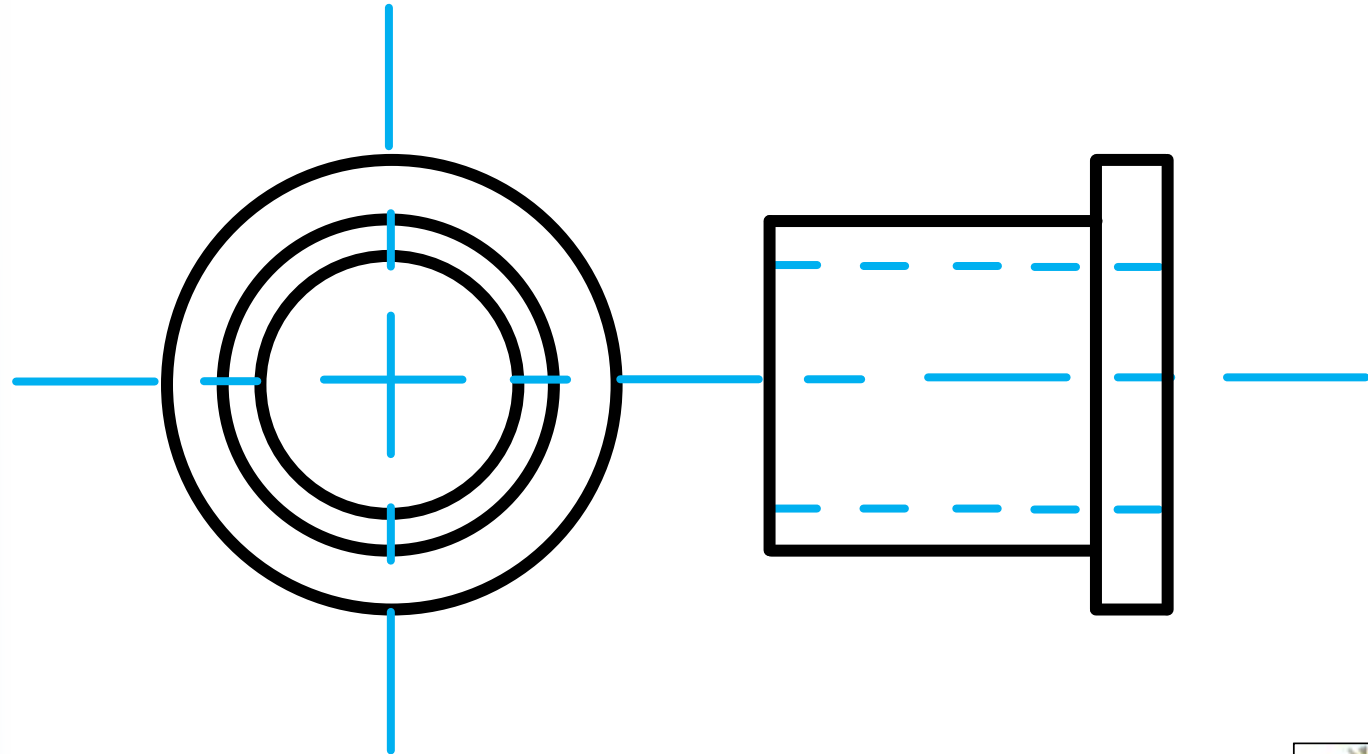
Presentation of Common Features

- The conventional representation of a **bearing**.



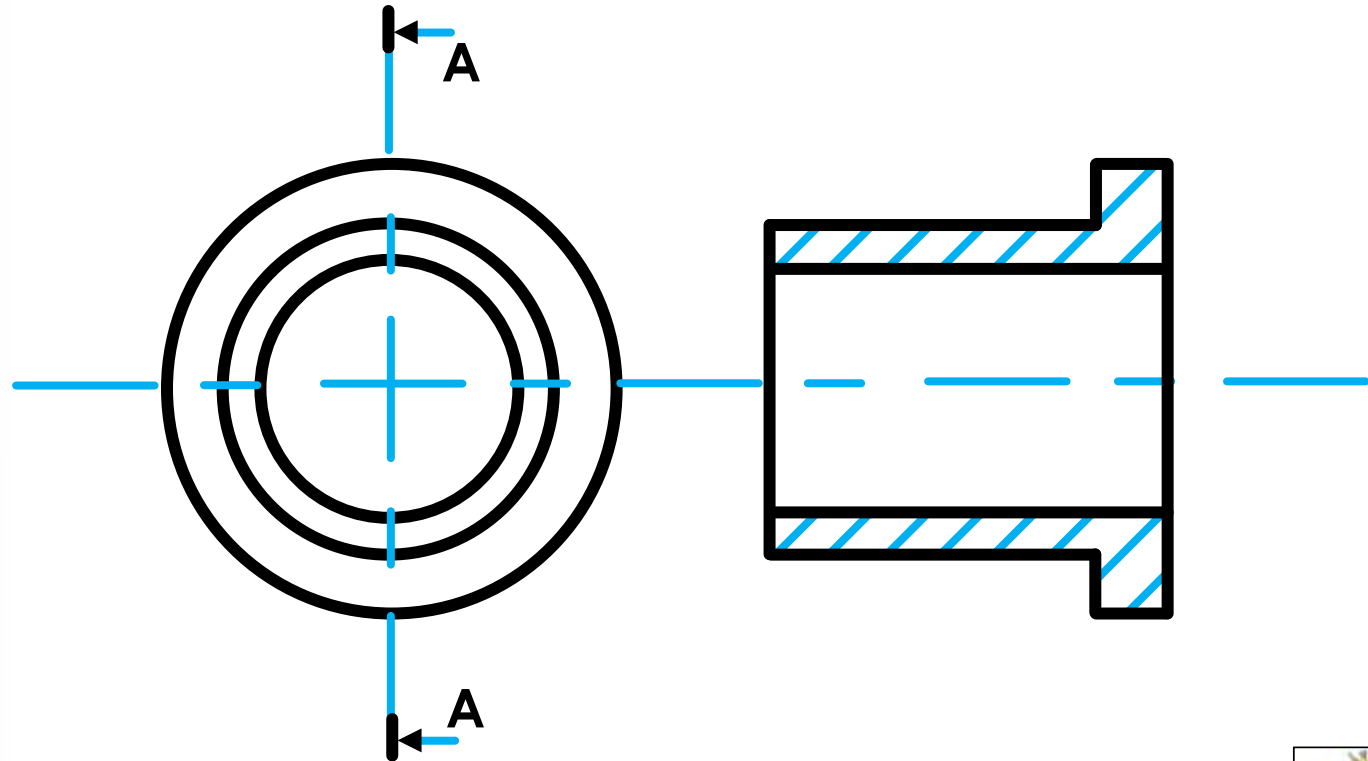
Presentation of Common Features

- A representation of a **bush**.



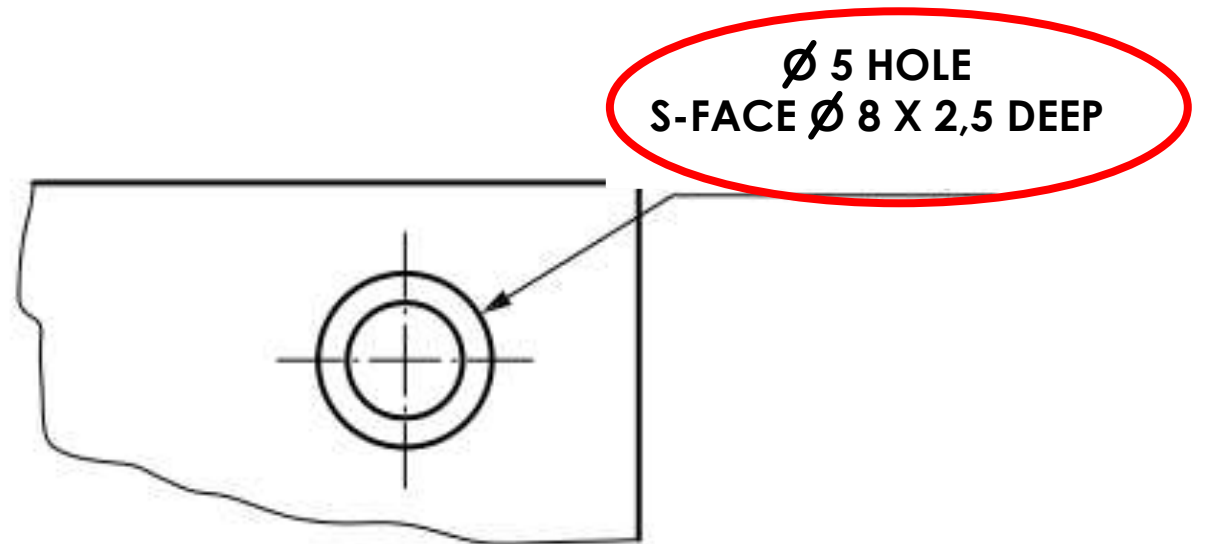
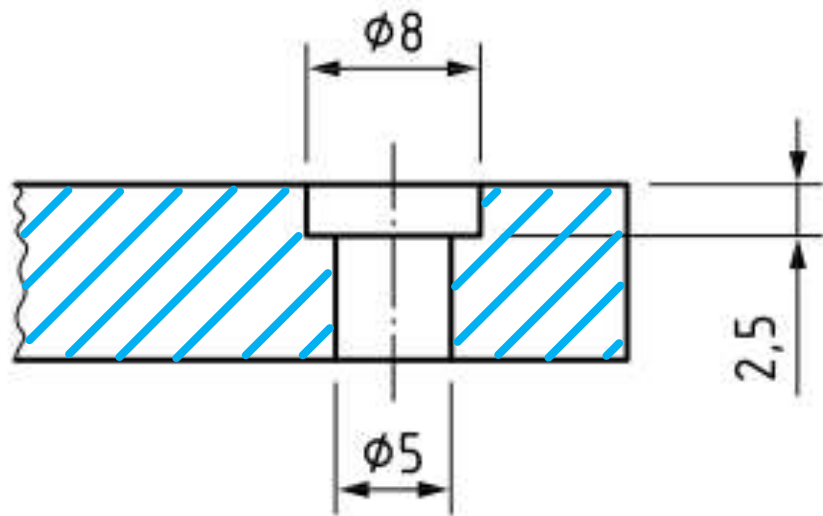
Presentation of Common Features

- A representation of a sectioned **bush**.



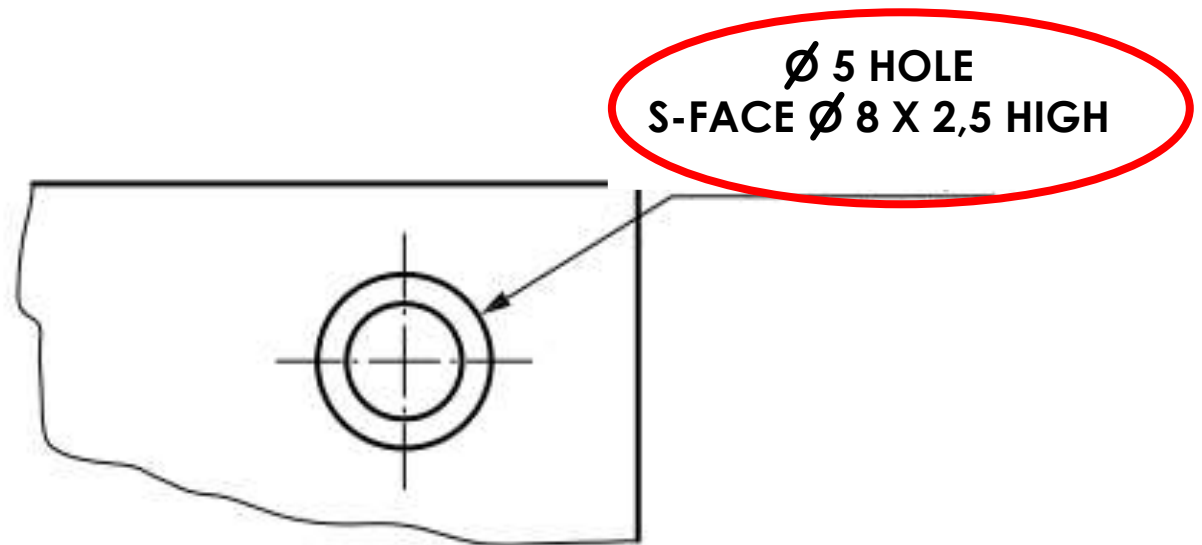
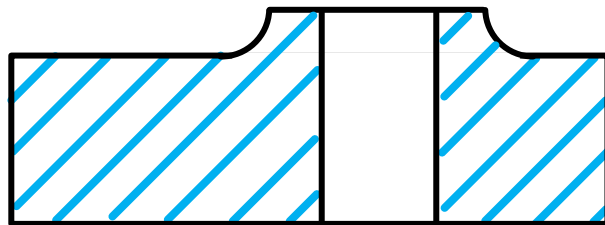
Presentation of Common Features

- ▶ A representation of a **spot face**
 - ▶ A **spot face** is normally **less than 4 mm**



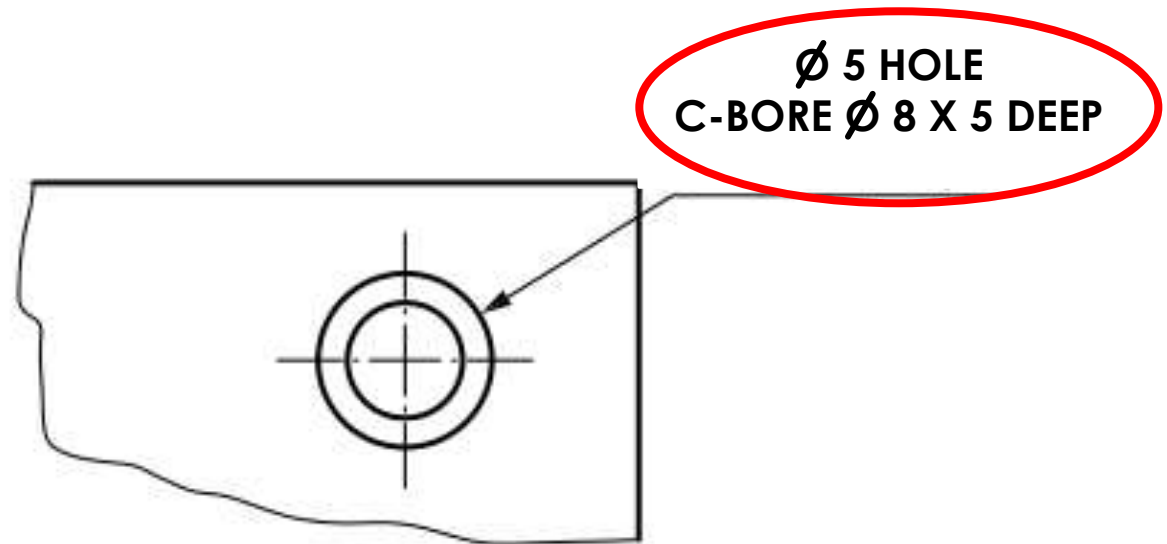
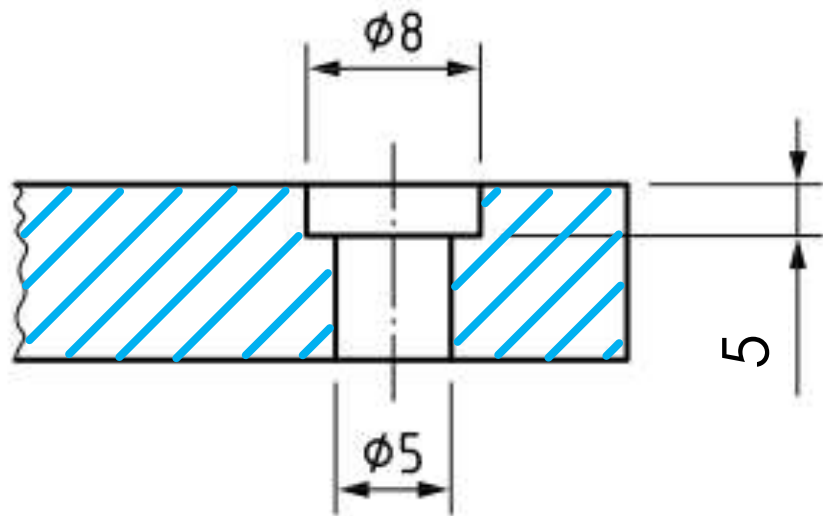
Presentation of Common Features

- ▶ A representation of a **spot face**
 - ▶ A **spot face** is normally **less than 4 mm**



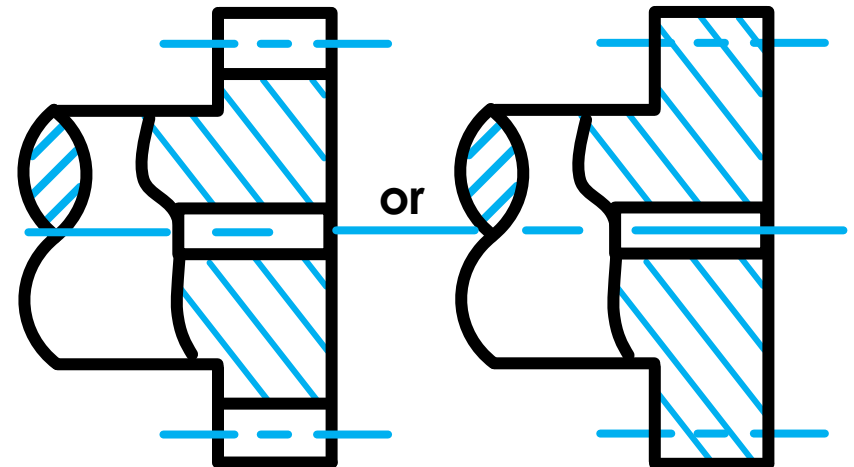
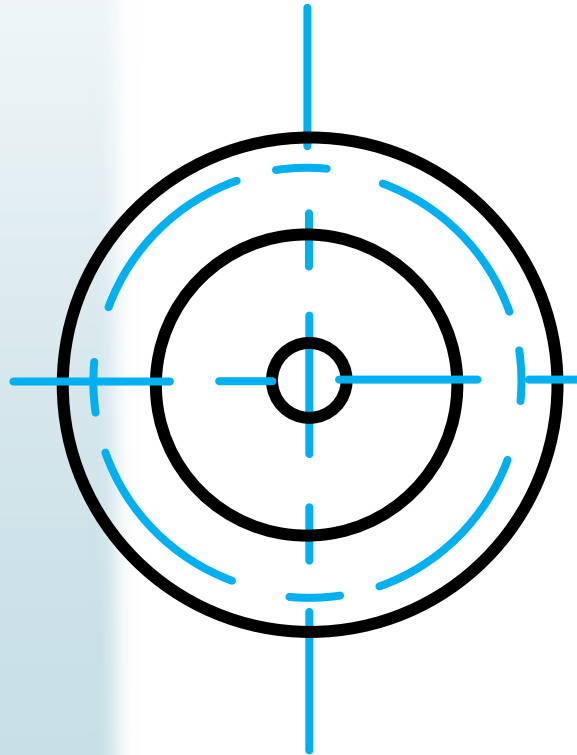
Presentation of Common Features

- ▶ A representation of a **counter bore**
 - ▶ A **counter bore** is normally **deeper** than **4 mm**
 - ▶ Asked as question in **2019**



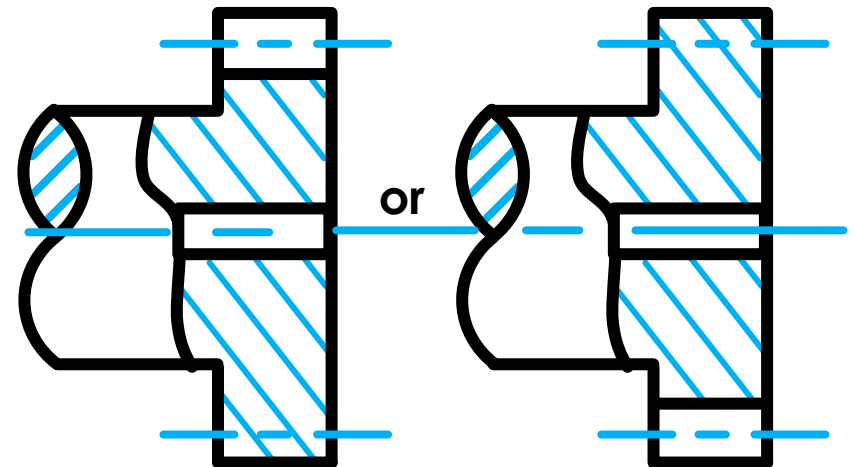
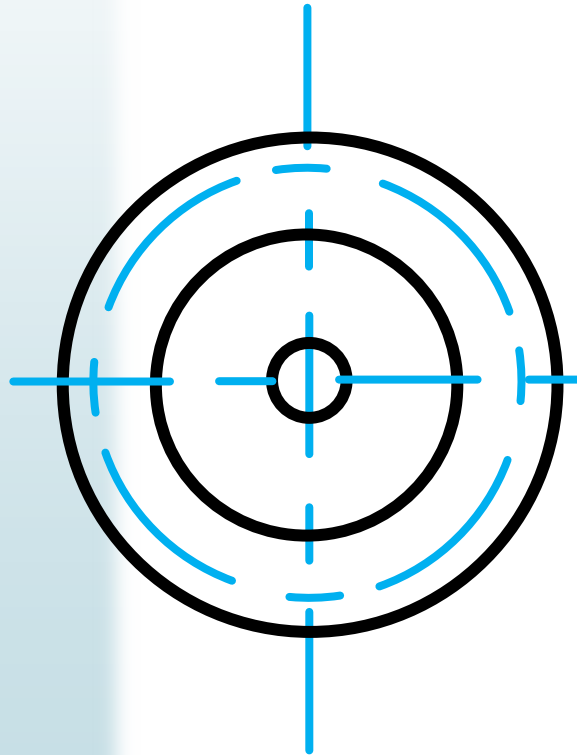
Presentation of Common Features

- The conventional representation of a gear.
 - Equal number of teeth.



Presentation of Common Features

- ▶ The conventional representation of a gear.
 - ▶ Unequal number of teeth.



Presentation of Common Features

► Asked as question:

► 2018

► 2019

