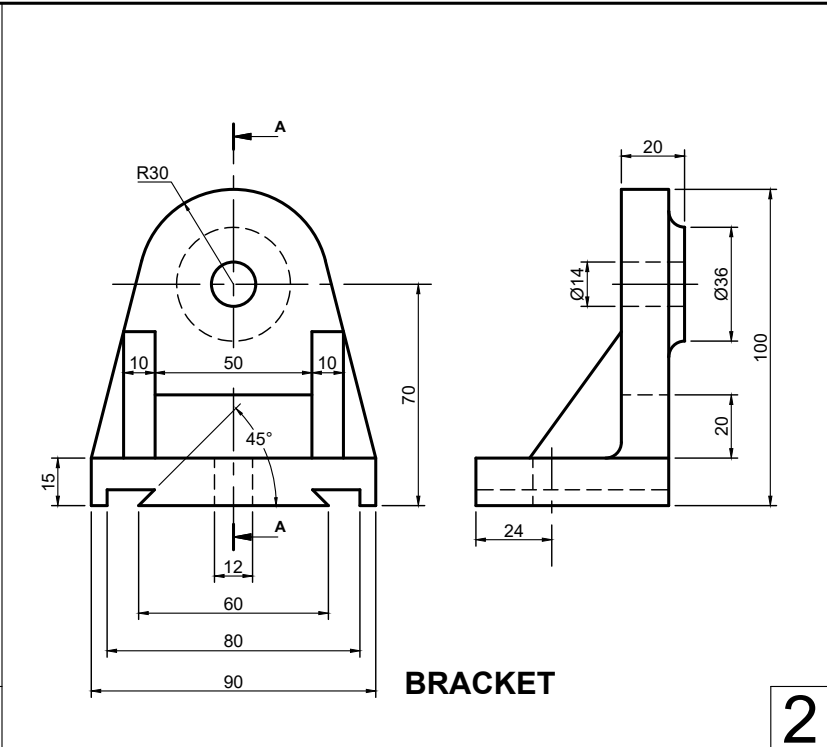


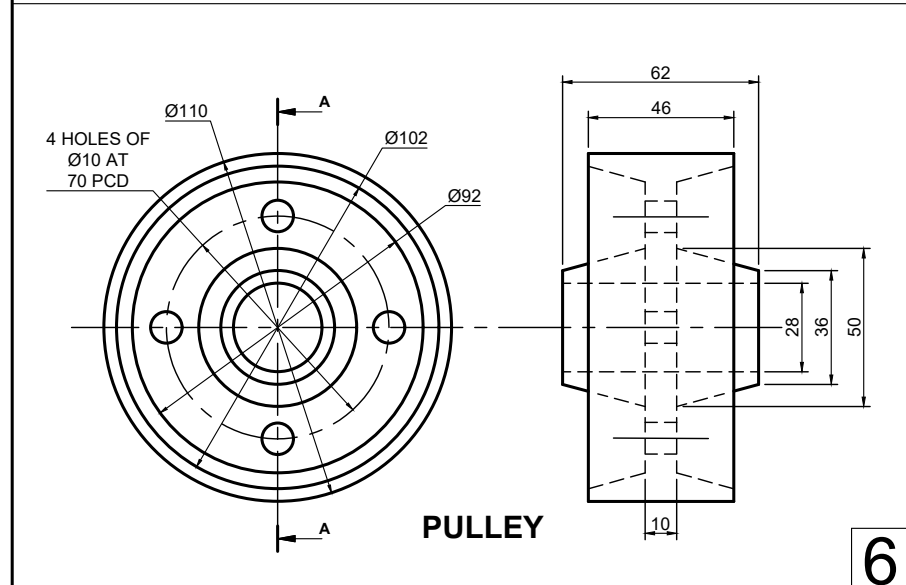
**BASE**

1



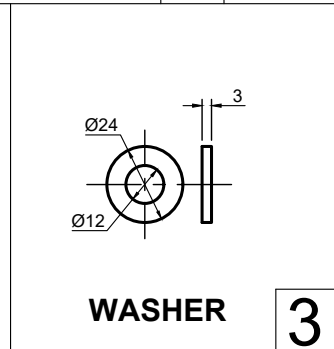
**BRACKET**

2



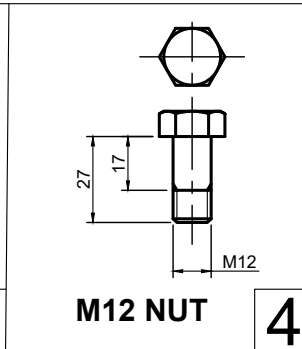
**PULLEY**

6



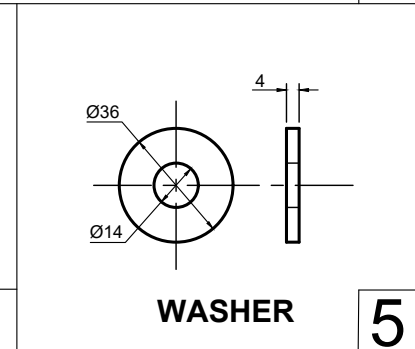
**WASHER**

3



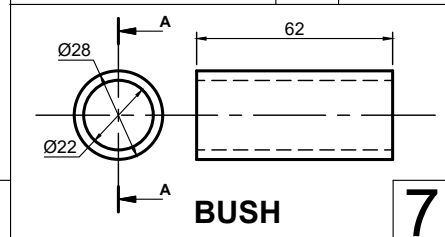
**M12 NUT**

4



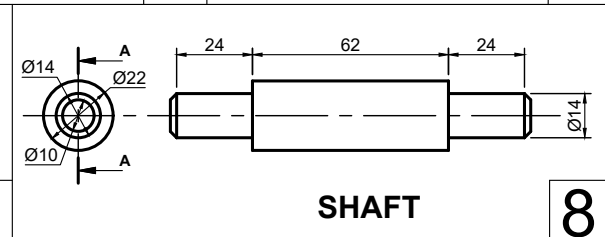
**WASHER**

5



**BUSH**

7



**SHAFT**

8

**QUESTION 3: MECHANICAL ASSEMBLY**

**GIVEN:**

The exploded isometric drawing of the parts of a pulley assembly, showing the position of each part relative to all the others. Orthographic views of each of the parts of the pulley assembly.

**INSTRUCTIONS:**

Answer this question on page 9.8. Draw, to scale 1:1 and in third-angle orthographic projection, the following views of the assembled parts of the pulley assembly.

- A sectional front view, on cutting plane A-A. The front view is seen from the direction of the arrow shown on the exploded isometric drawing.
- The left view

All drawings must comply with the guidelines contained in the SANS 10111.

**NOTE:**

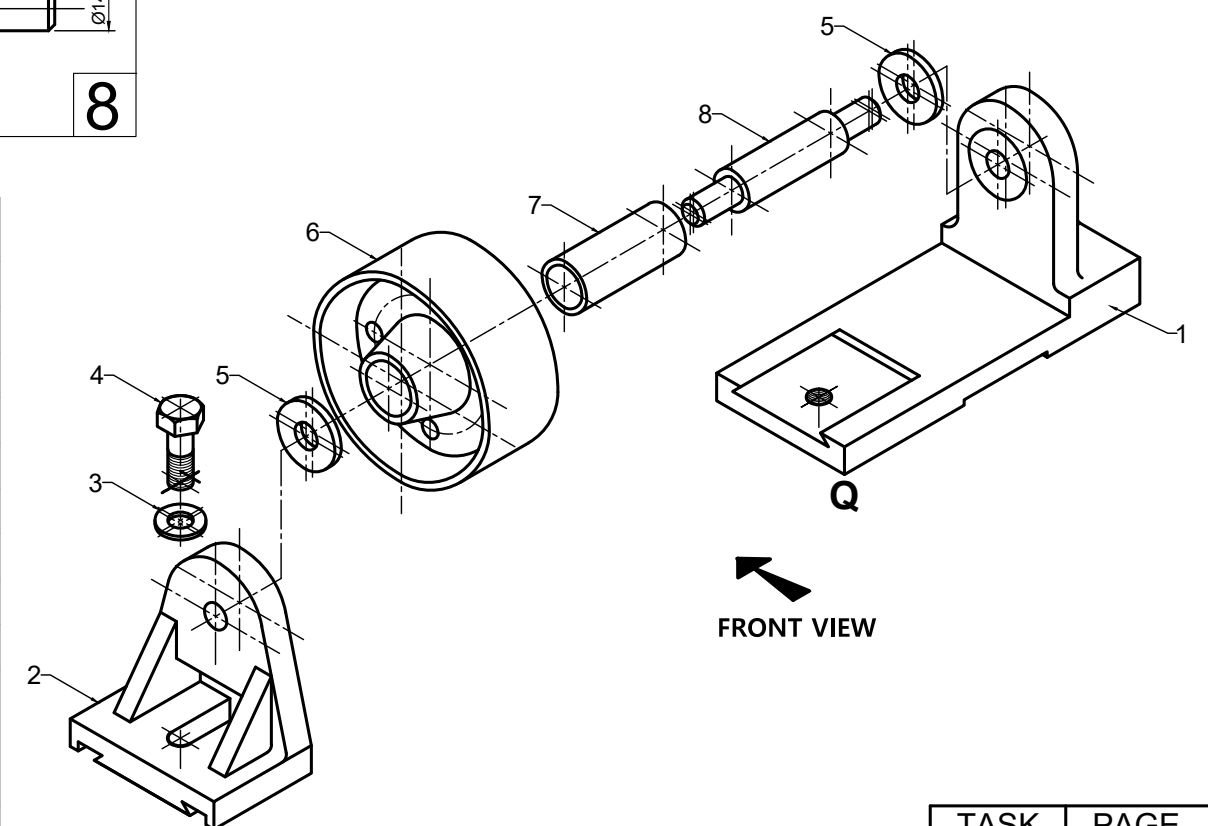
Add the following to the drawing:

- Three sides of the bolt in the sectional front view.
- The cutting plane A-A on the answer sheet.
- The projection system symbol for the system of projection used.
- Between 5 mm guidelines neatly supply the drawing with a title and scale in the title block provided

PULLEY ASSEMBLY  
SCALE 1:1

- Between 3 mm guidelines neatly label the sectional view: SECTIONED FRONT VIEW ON AA.
- No hidden detail is required.

[94]



PARTS LIST		
PART	QUANTITY	MATERIAL
1. BASE	1	CAST IRON
2. BRACKET	1	CAST IRON
3. WASHER	1	MILD STEEL
4. BOLT	1	MILD STEEL
5. WASHER	2	MILD STEEL
6. PULLEY	1	CAST IRON
7. BUSH	1	BRONZE
8. SHAFT	1	MILD STEEL

**Micro Steel**  
MANUFACTURING

JUTT STREET  
SOUTH CLIFF  
6005  
www.msteel.co.za

TITLE **PULLEY ASSEMBLY**

ALL DIMENSIONS ARE IN MILLIMETRES.

ALL UNSPECIFIED RADII ARE R5

DRAWING PROGRAM: CAD 2017

**DRAWN BY: JENN**  
**DATE: 02/04/2017**

**CHECKED BY: DAVID**  
**DATE: 29/04/2017**

**APPROVED BY: JOHN**  
**DATE: 05/05/2017**  
**SCALE / SKAAL 1:1**

TASK 12.1	PAGE 9.7
--------------	-------------

TITLE AND SCALE			
PROJECTION SYMBOL			
ASSESSMENT CRITERIA			
SECTIONED FRONT VIEW			
1	BASE	12	
2	BRACKET	8	
3	WASHERS	7	
4	BOLT	11	
5	PULLEY	15	
6	BUSH	3	
7	SHAFT	5	
<b>SUB TOTAL 1</b>		<b>61</b>	
LEFT VIEW			
1	BASE	4	
2	BRACKET	8	
3	WASHER	1.5	
4	BOLT	4	
5	PULLEY	6.5	
6	SHAFT	0.5	
<b>SUB TOTAL 2</b>		<b>24.5</b>	
GENERAL			
1	CENTRE LINES	2	
2	SECTION LINE ON AA	3	
3	PROJECTION SYMBOL	2	
4	TITLE & SCALE	1	
5	TITLE - SECTIONED VIEW	0.5	
<b>SUB TOTAL 3</b>		<b>8.5</b>	
<b>TOTAL</b>		<b>94</b>	
TOTAL PENALIZATION (-1)			
<b>GRAND TOTAL</b>			



MECHANICAL ASSEMBLY	ESTIMATED TIME FOR COMPLETION	45 MIN	GRADE <b>11</b>	NAME & SURNAME	TASK 12.1	PAGE 9.8
	YOUR TIME OF COMPLETION	MIN				