



QUESTION : CIVIL DRAWING (ROOF CONSTRUCTION)

Given:

- A schematic drawing of a roof truss.
- A drawing with incomplete roof detail.
- The position of the load-bearing walls.

Instructions:

- Using the given load-bearing walls as a guide , draw, to scale 1 : 20 and according to the given specifications:
- The complete roof truss.

ALL drawing must comply with the guidelines contained in SANS 0143

ROOF NOTES:
ROOF PITCH 20°

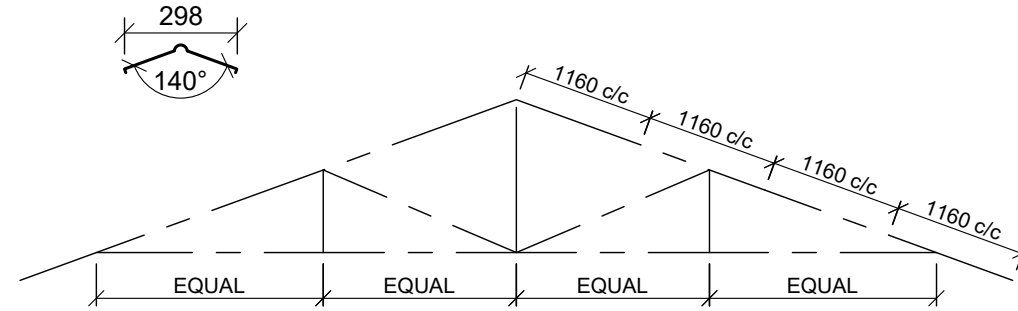
115 x 38 mm ROOF TRUSSES ON 115 x 38 mm WALL PLATES

ROOF OVERHANG 500 mm TO END OF ROOF TRUSSES

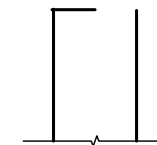
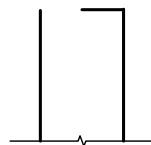
ROOF COVER 40 mm IBR SHEETING ON 75 X 50 mm PURLINS @ 1000 mm c/c

220 x 20 mm FASCIA BOARD ON ALL SIDES

9 mm CEILING BOARDS OP 38 x 38 mm BRANDERING STRIPS @ 400 mm c/c



ASSESSMENT CRITERIA			
ROOF CONSTRUCTION			
1	ROOF PITCH + ROOF COVERING	6	
2	PURLINS + SPACING	4	
3	ROOF TRUSSES	6	
4	FACIA BOARD + WALLPLATE	2	
5	BRANDERING + SPACING	4	
6	CEILING BOARD	1	
7	BEAM FILLING	2	
TOTAL 1		25	



CIVIL WORK DRAWING

ESTIMATED TIME FOR COMPLETION
YOUR TIME FOR COMPLETION

25 MIN
MIN

GRADE

INITIALS &
SURNAME

TASK
3.1.1

PAGE
9