

**2.2.1 THE**  
**CONSTRUCTION**  
**INDUSTRY**  
**CIVIL DRAWINGS**  
**(Floor plan)**

Developed by: PC Viljoen  
Senior Educational Specialist for  
Engineering Graphics and Design  
Free State Province

# PRESCRIBED CONTENT FOR GRADE 10, 11 & 12

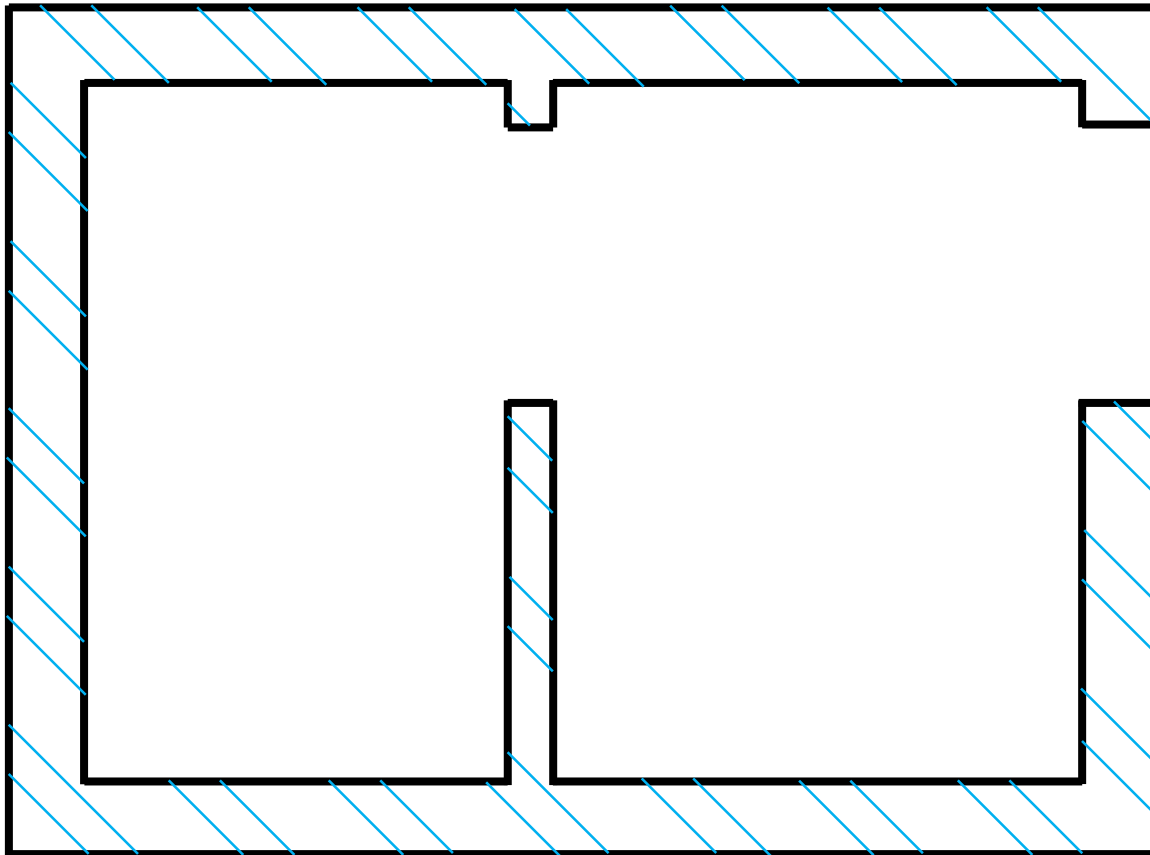
- **The floor plan showing the windows and doors.**
- Elevation drawings.
- Sectional elevations showing the detail from the foundation to the roof ceiling.

# FLOOR PLAN

- The walls of a house can be
  - load bearing (220mm)
  - or
  - non-load bearing (110mm)

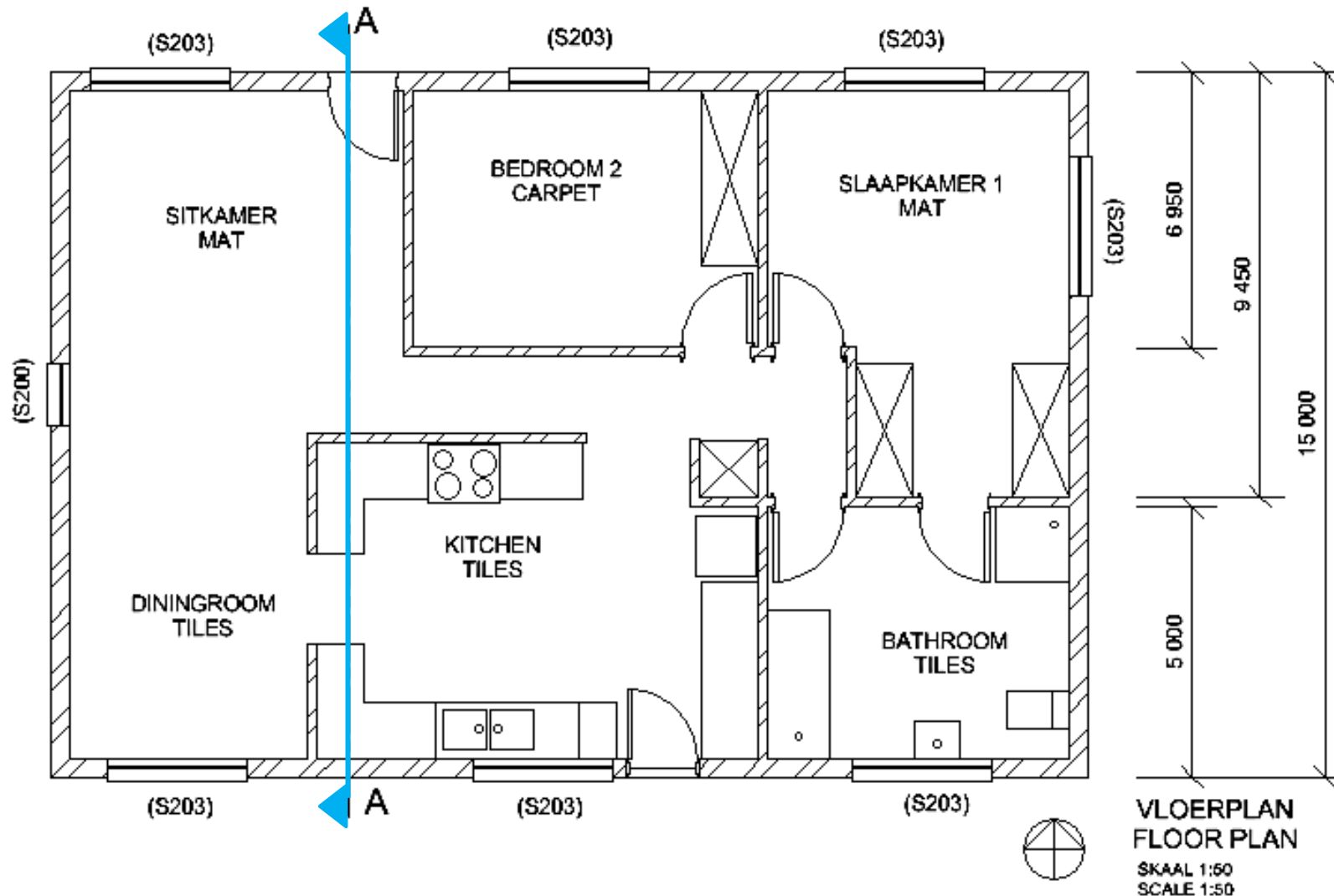
# FLOOR PLAN

- The walls of a house



# FLOOR PLAN

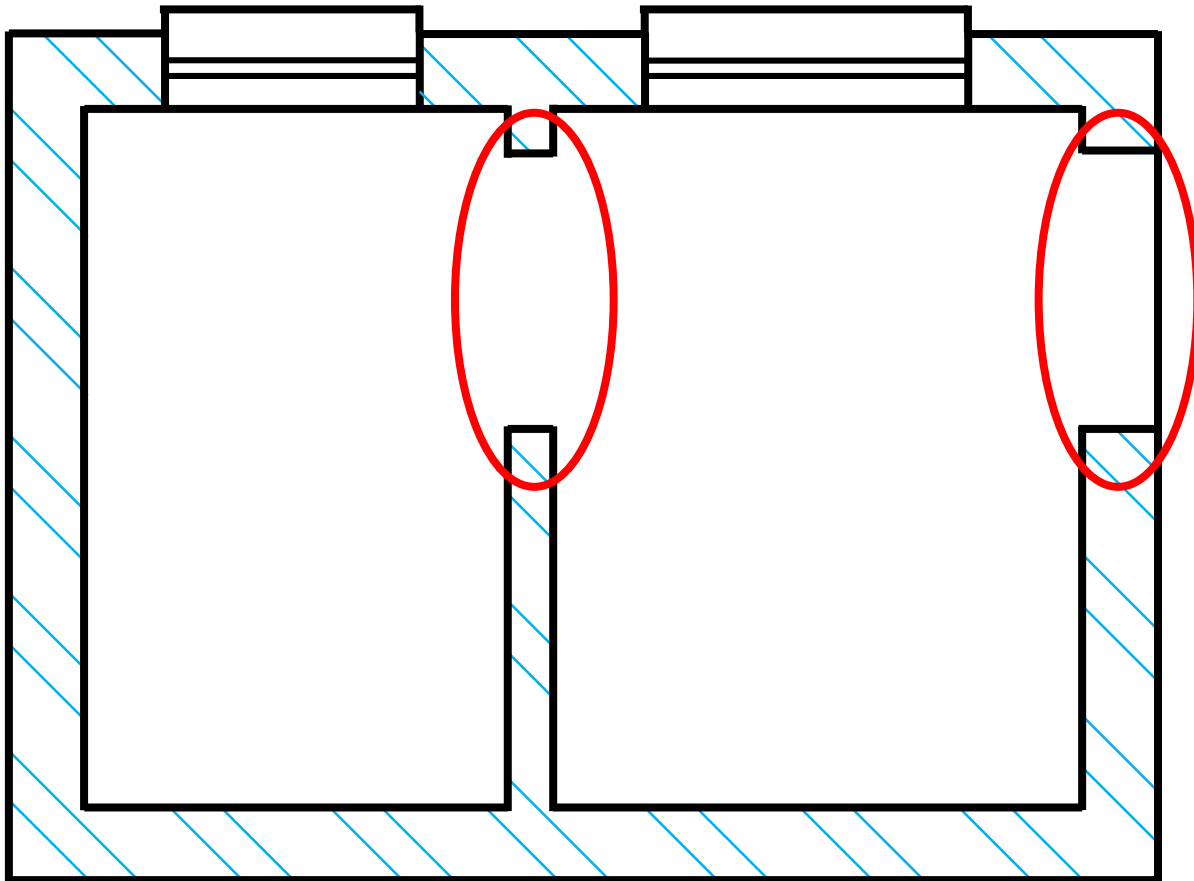
- The walls of the house



VLOERPLAN  
FLOOR PLAN  
SKAAL 1:50  
SCALE 1:50

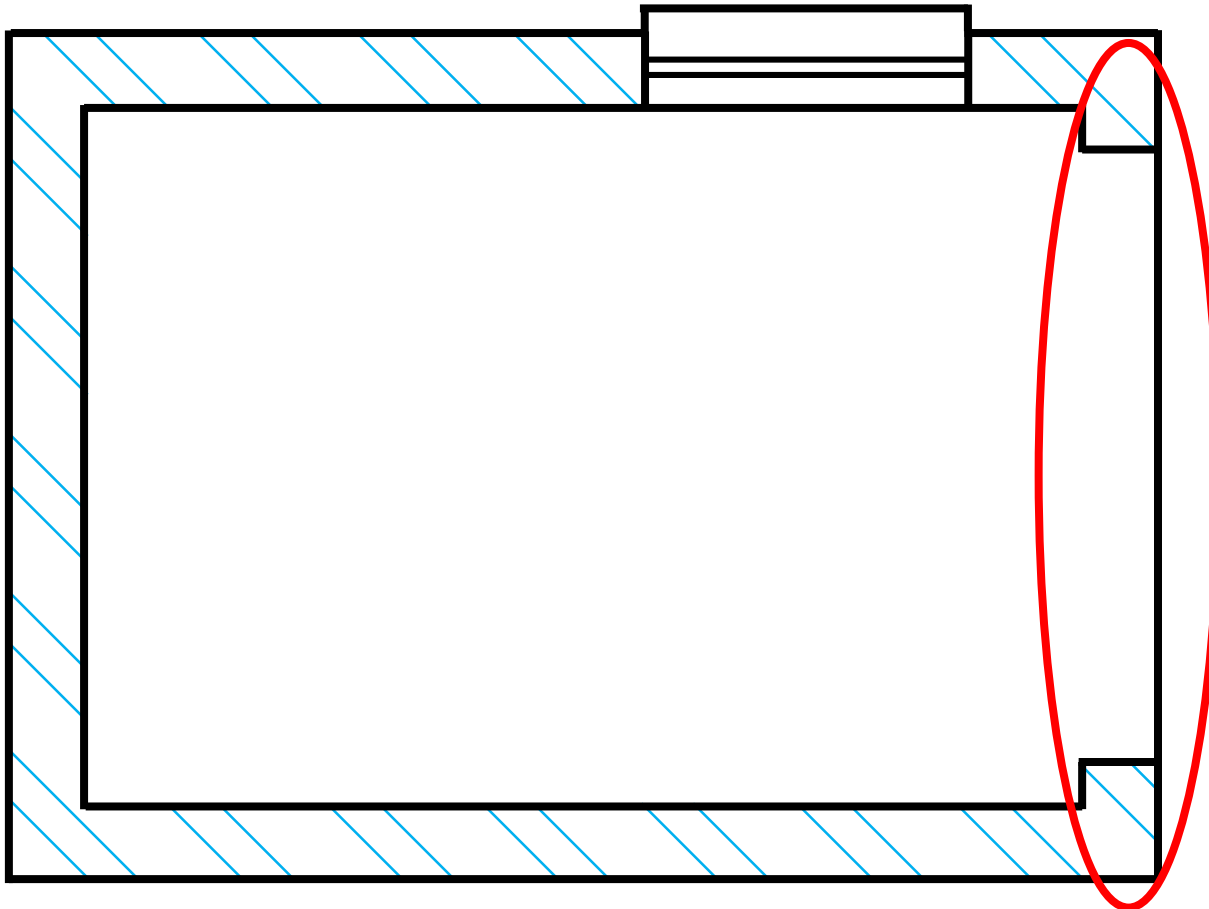
# FLOOR PLAN

- Interior & exterior door openings.



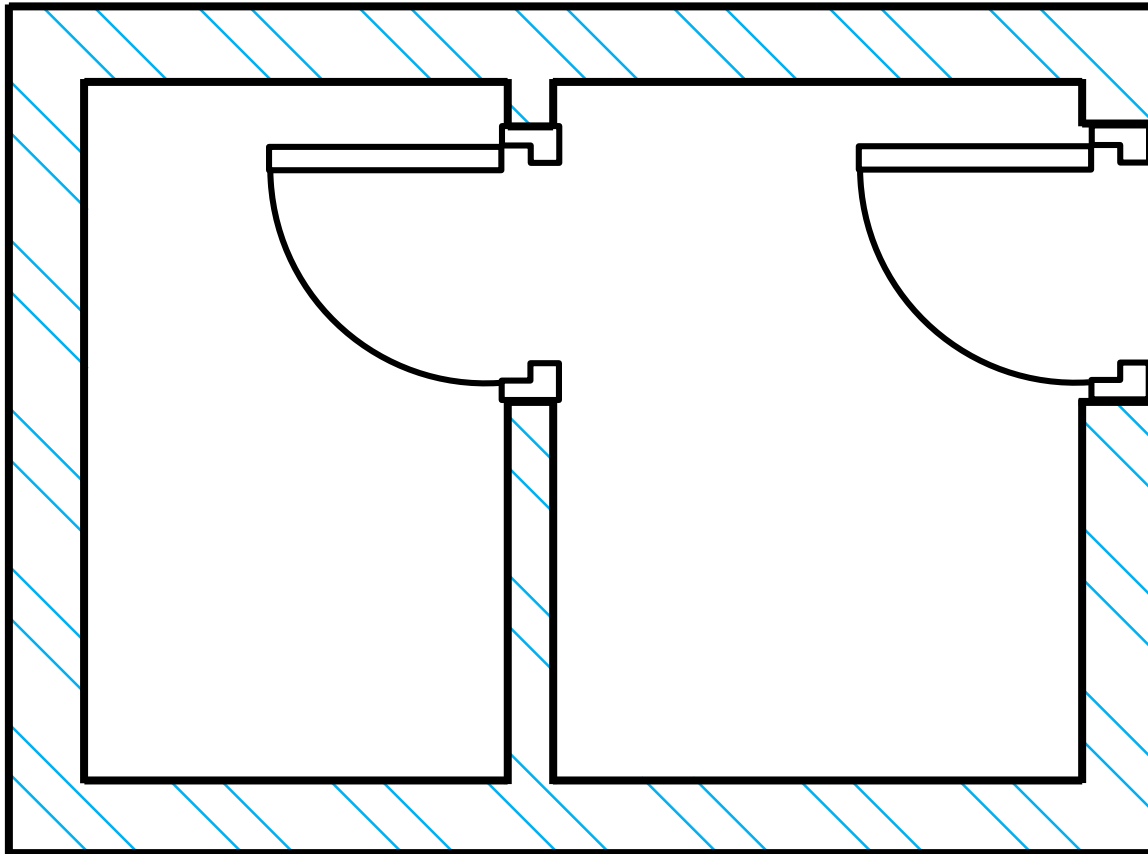
# FLOOR PLAN

- Exterior garage door openings.



# FLOOR PLAN

- The doors of a house

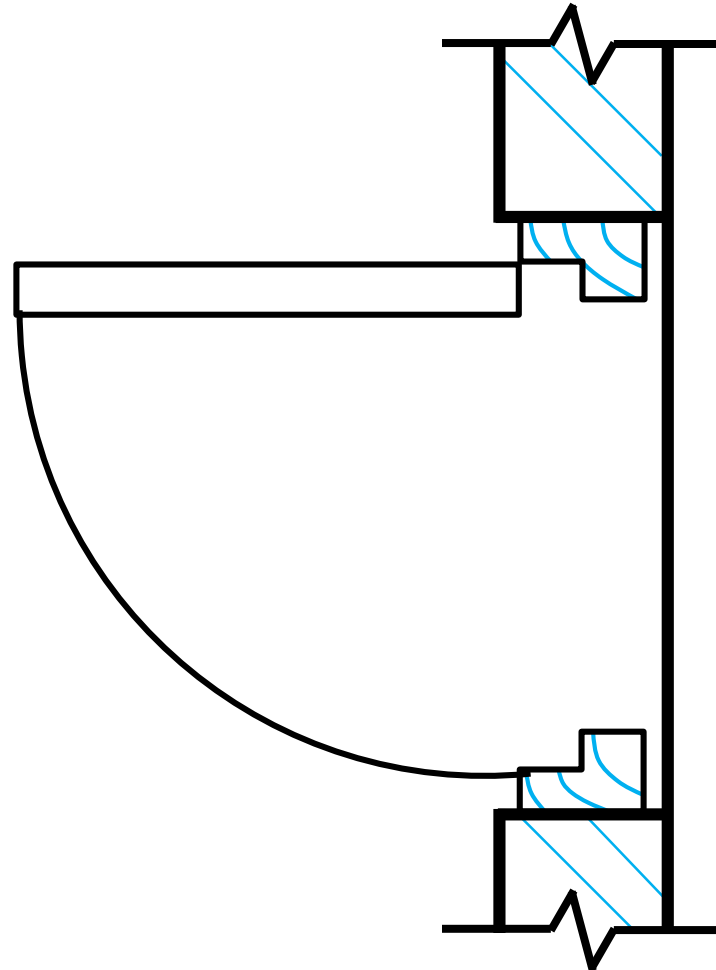


# FLOOR PLAN

- The door frames of a house can be manufactured from...
  - Wood
  - Steel or
  - Aluminum

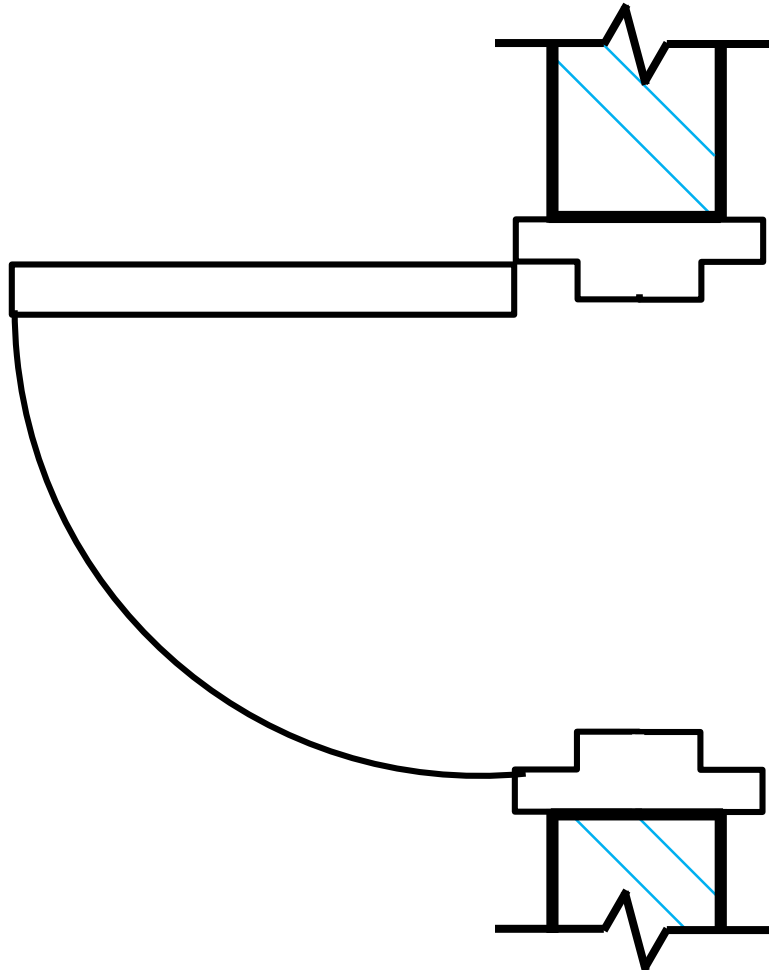
# FLOOR PLAN

- Wooden door frame



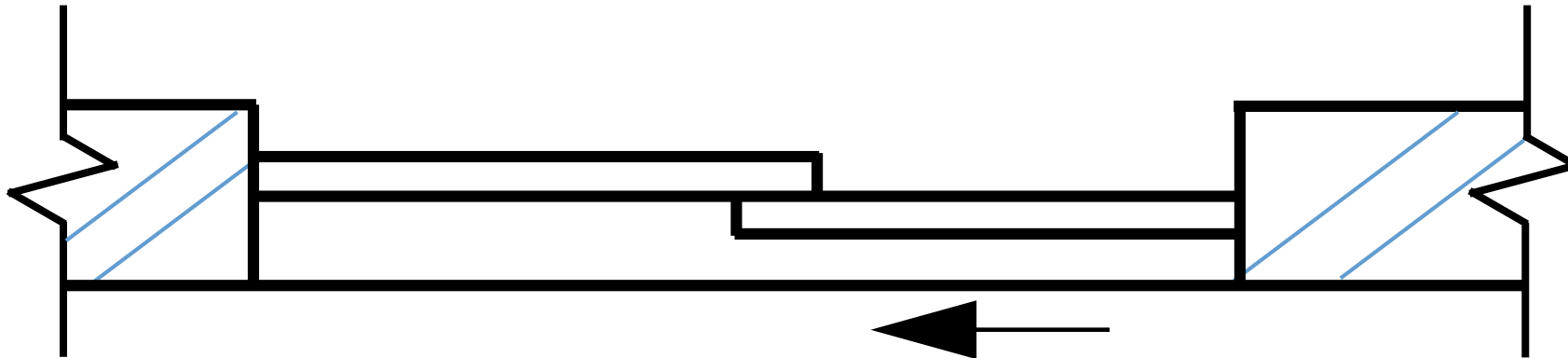
# FLOOR PLAN

- Steel door frame



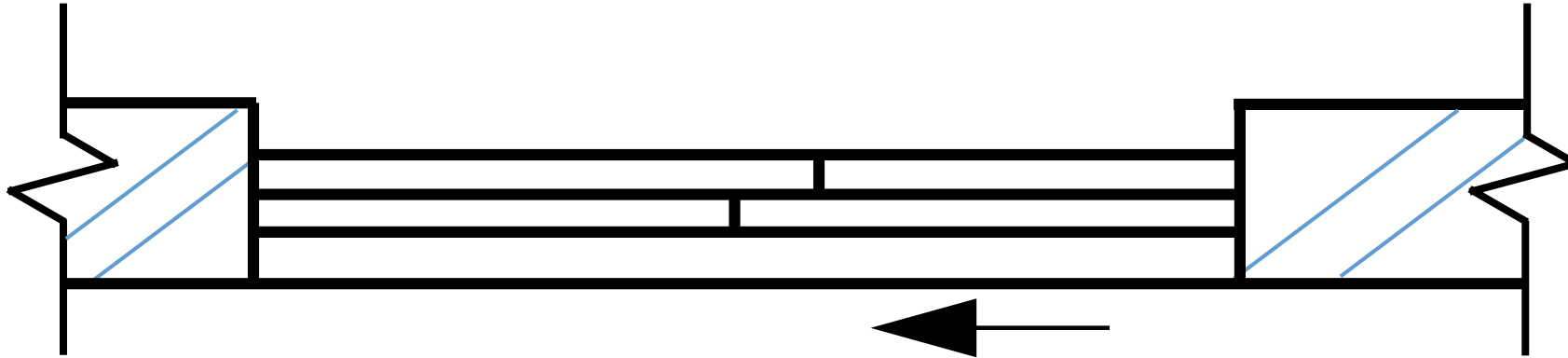
# FLOOR PLAN

- Aluminum door frame
  - The arrow indicate the sliding direction of the door.



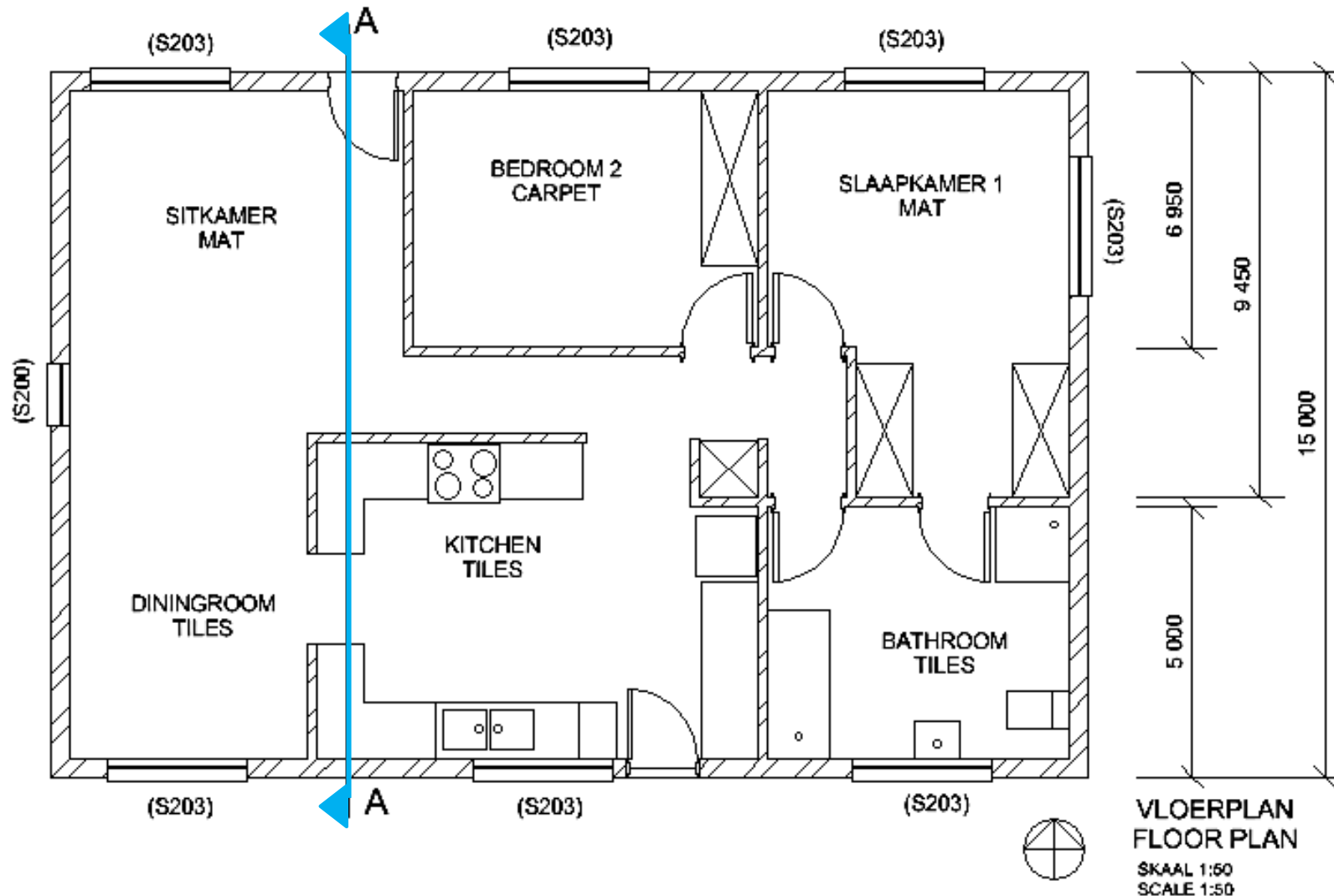
# FLOOR PLAN

- Aluminum door frame
  - The arrow indicate the sliding direction of the door.



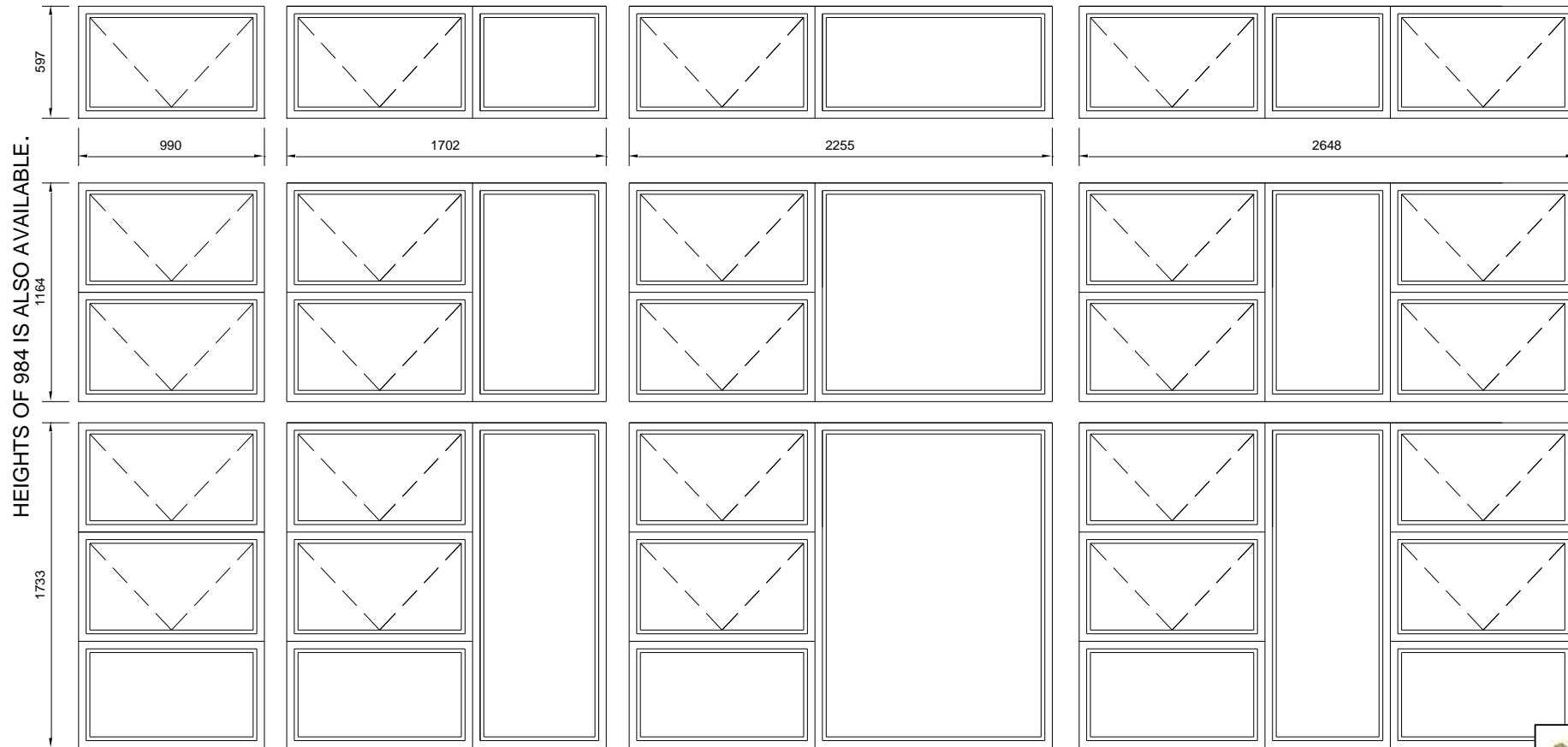
# FLOOR PLAN

- All door openings (functionality & privacy)



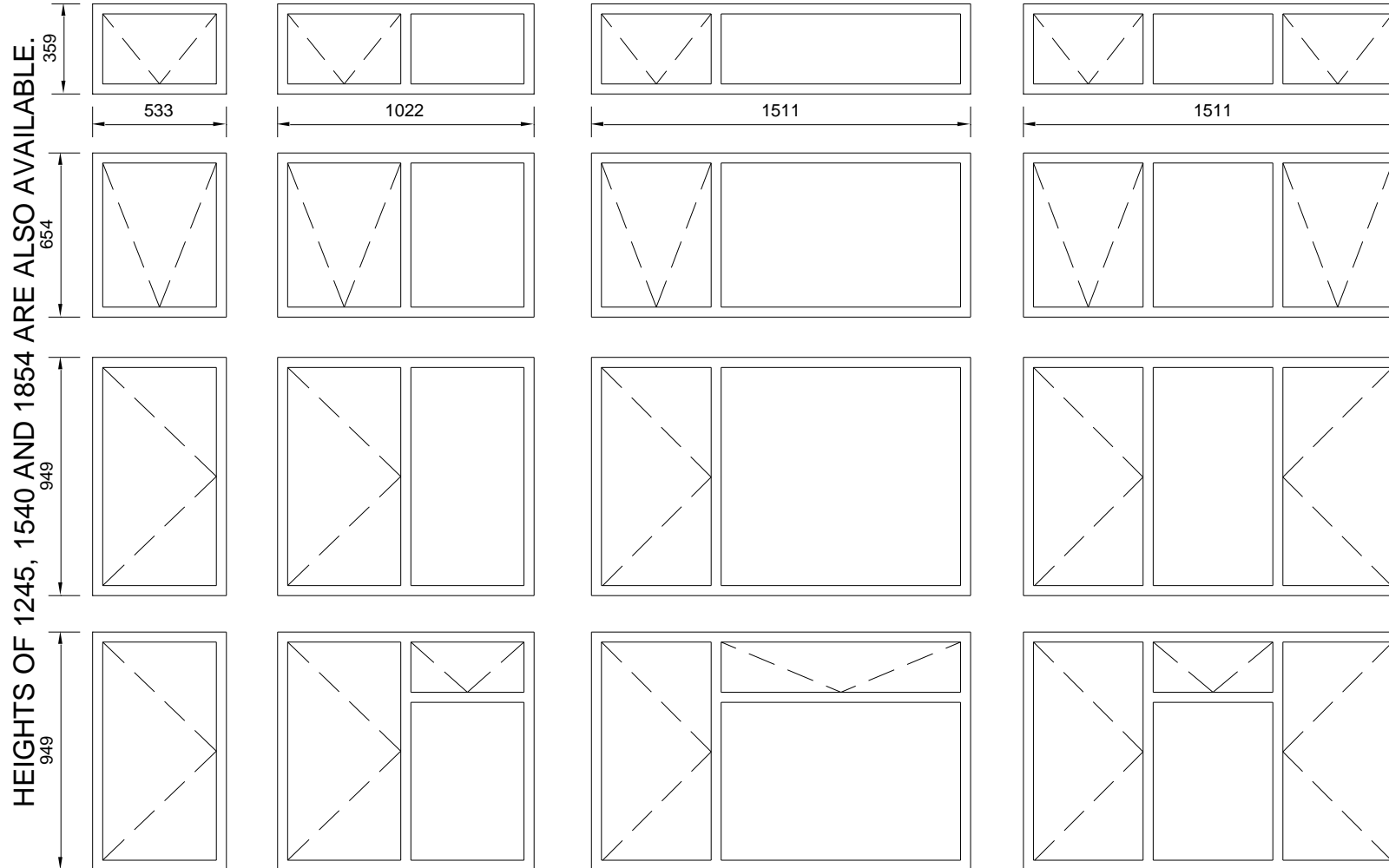
VLOERPLAN  
FLOOR PLAN  
SKAAL 1:50  
SCALE 1:50

# WINDOWS ARE AVAILABLE IN DIFFERENT SHAPES & SIZES



WIDTHS OF 3200 IS ALSO AVAILABLE.

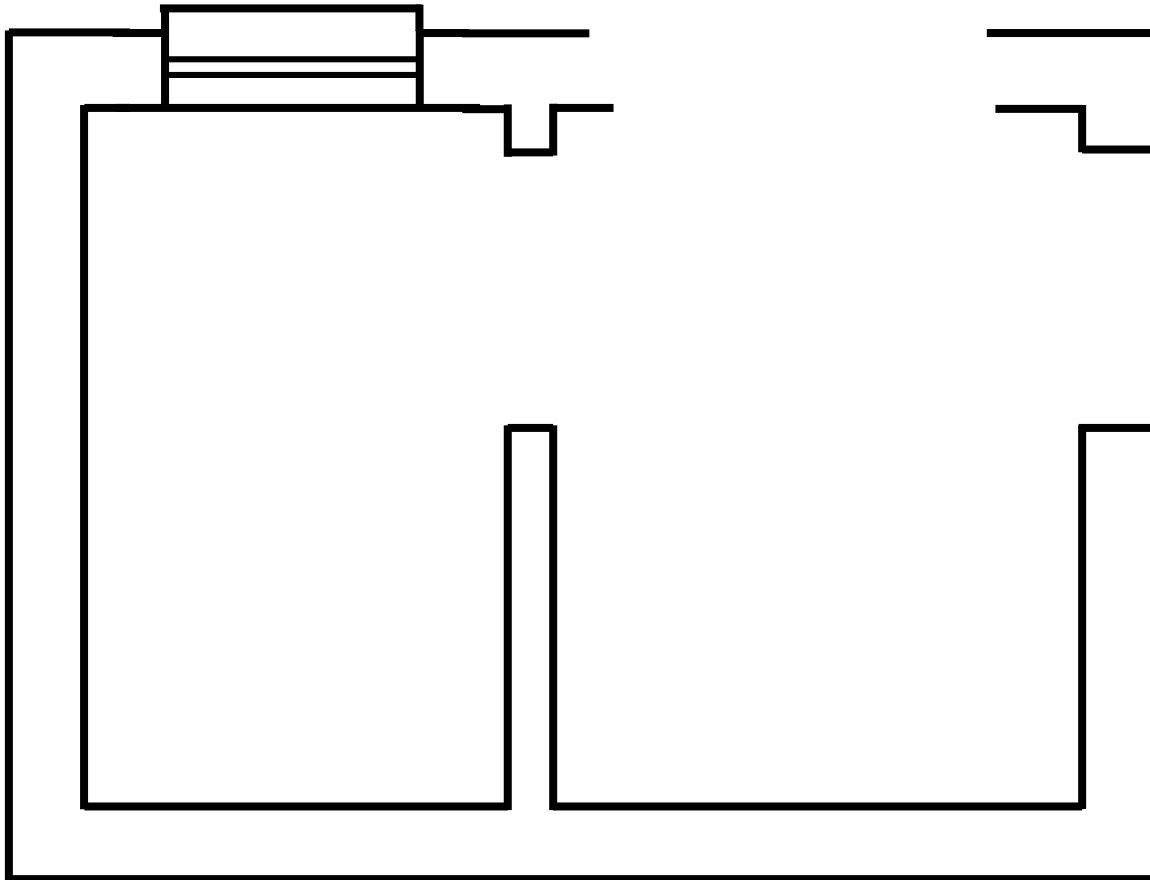
# WINDOWS ARE AVAILABLE IN DIFFERENT SHAPES & SIZES



WIDTHS OF 305, 2000 AND 2489 ARE ALSO AVAILABLE.

# FLOOR PLAN

- Drawing a window with a window sill

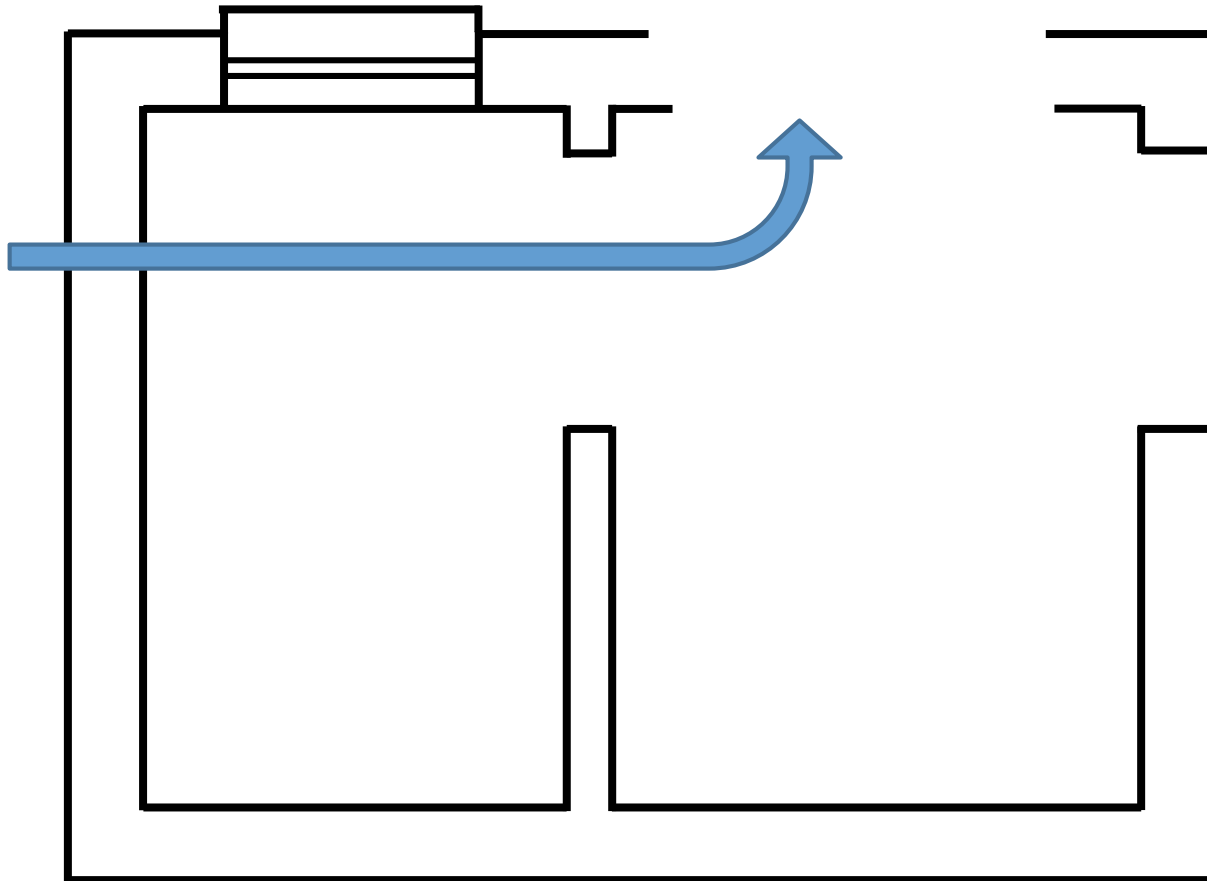
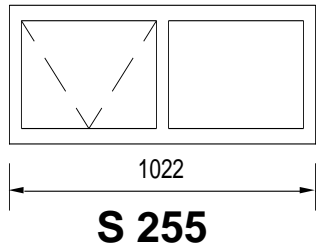


Scale 1:40



# FLOOR PLAN

- The window placement on exam scripts



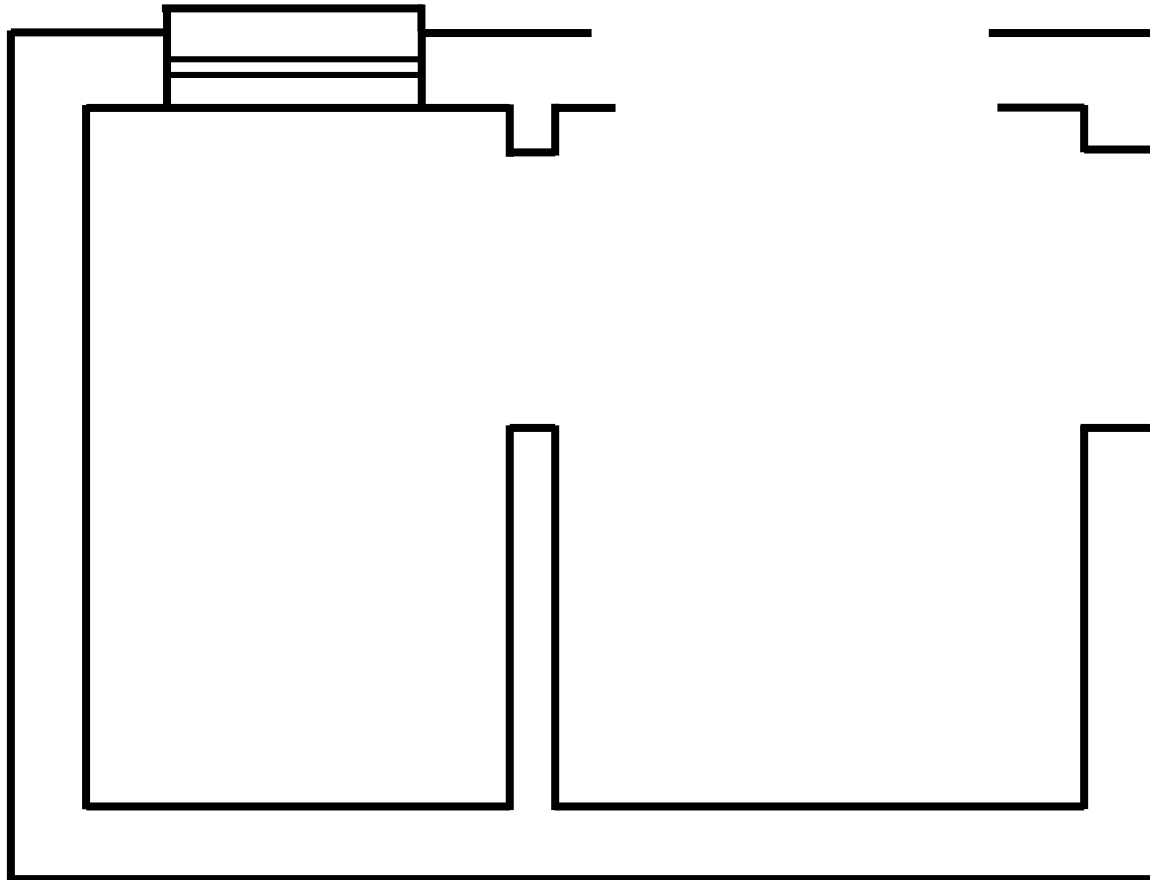
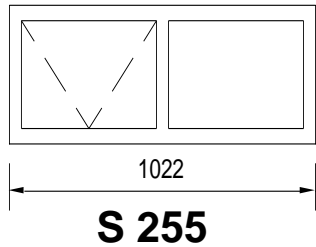
On an exam question paper, the gaps for window placement will be given larger than the size of the window.

Scale 1:40



# FLOOR PLAN

- The window placement on exam scripts



On an exam question paper, the gaps for window placement will be given larger than the size of the window.

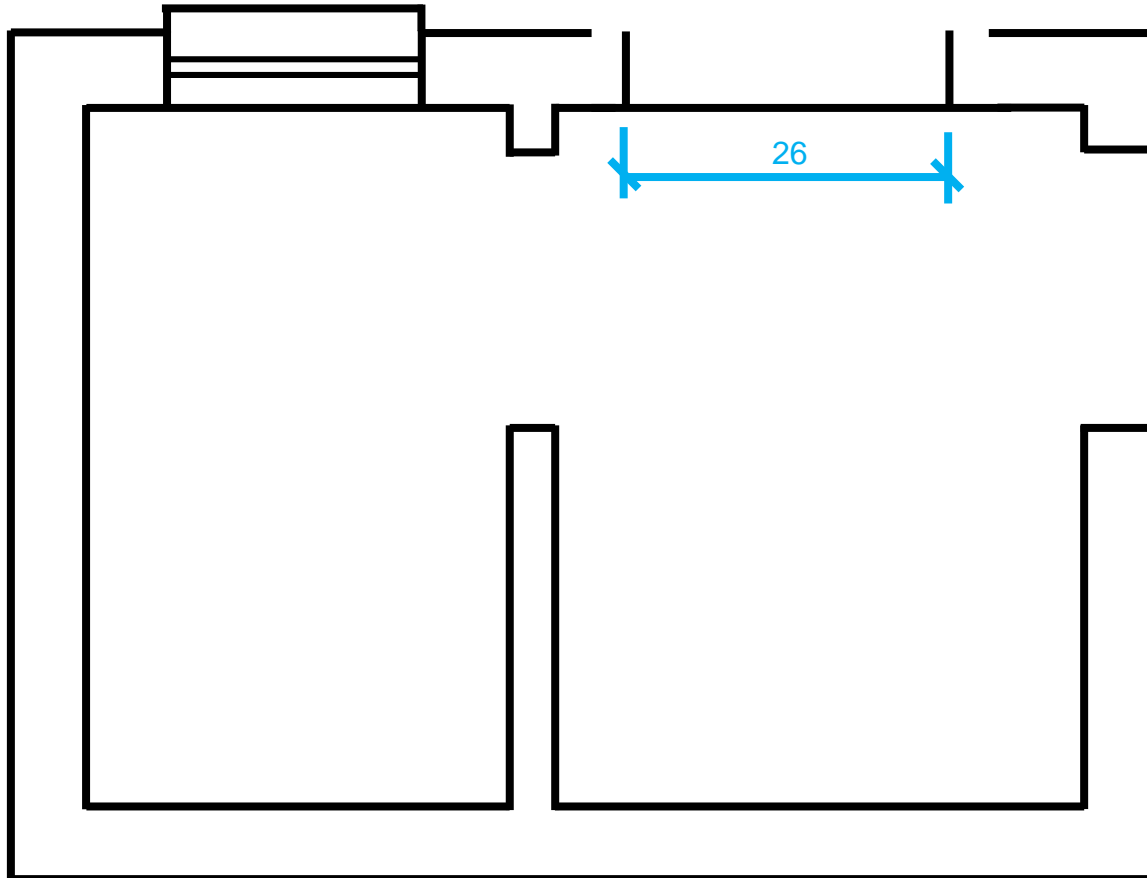
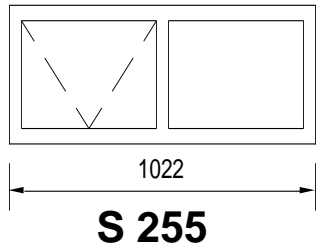
According to the given scale,  
determine the size of the window  
 $1022 \text{ mm} \div 40$   
 $= 25,55 \text{ mm}$   
 $= 26 \text{ mm}$

Scale 1:40



# FLOOR PLAN

- The window placement on exam scripts



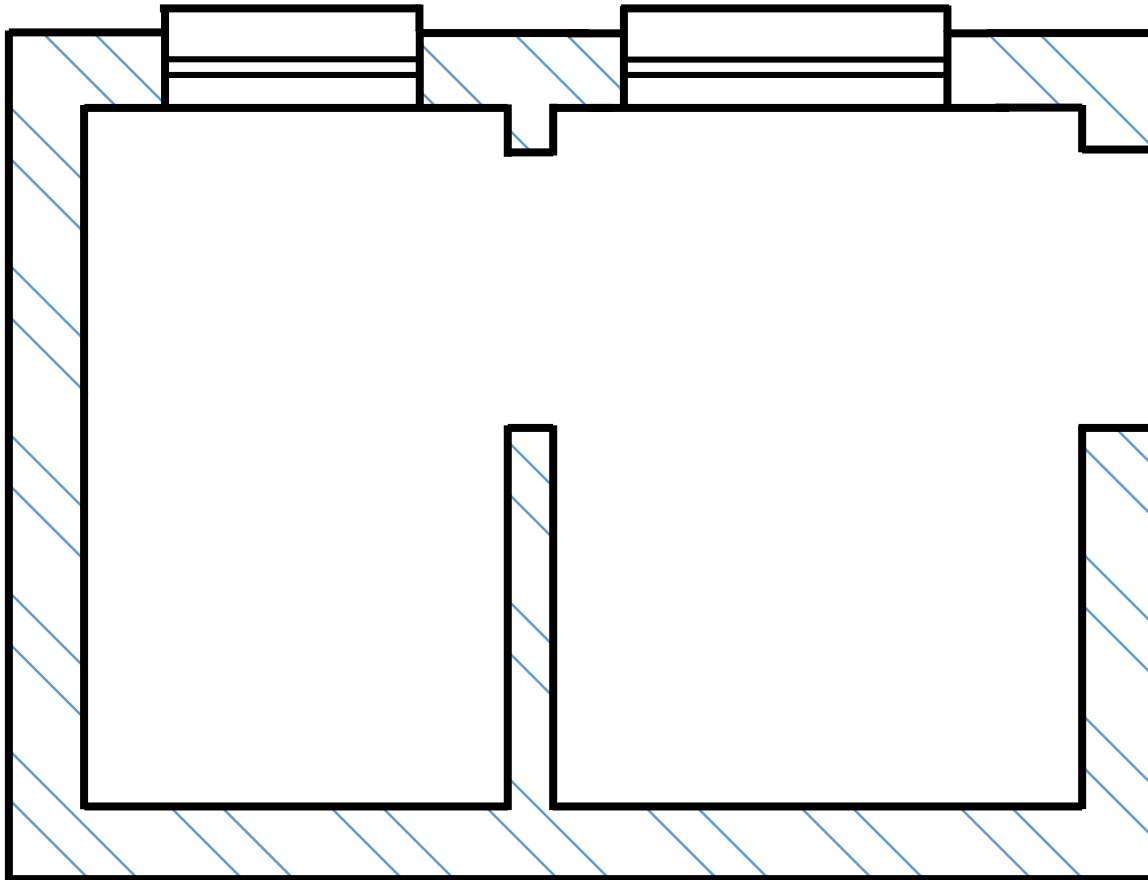
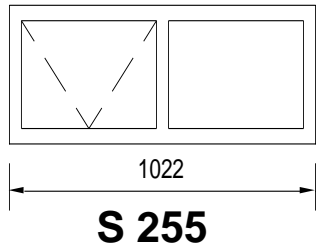
According to the given scale,  
determine the size of the window  
 $1022 \text{ mm} \div 40$   
 $= 25,55 \text{ mm}$   
 $= 26 \text{ mm}$

Scale 1:40



# FLOOR PLAN

- The window placement on exam scripts



Scale 1:40

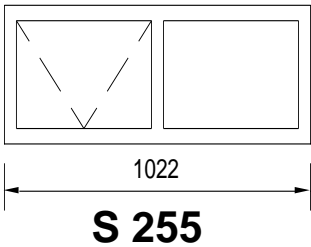
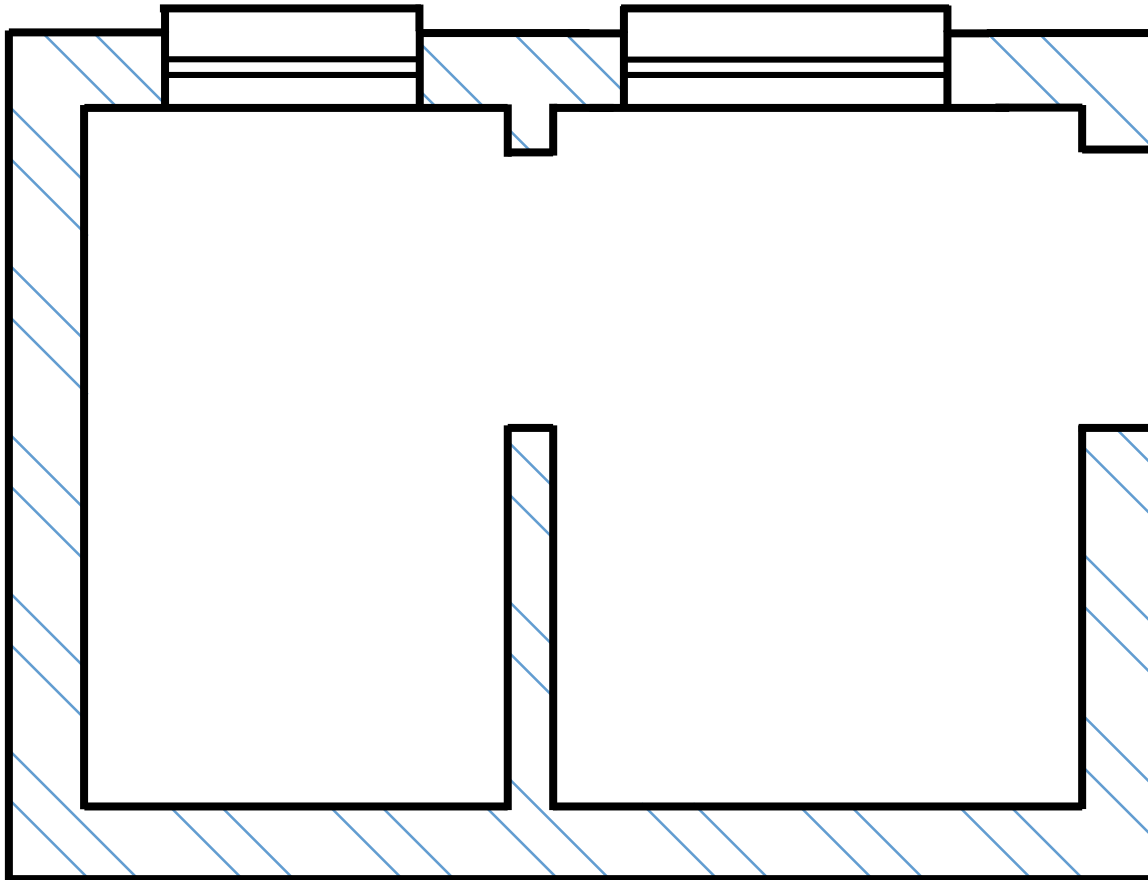


# FLOOR PLAN

- The window placement on exam scripts

S 118

S 255

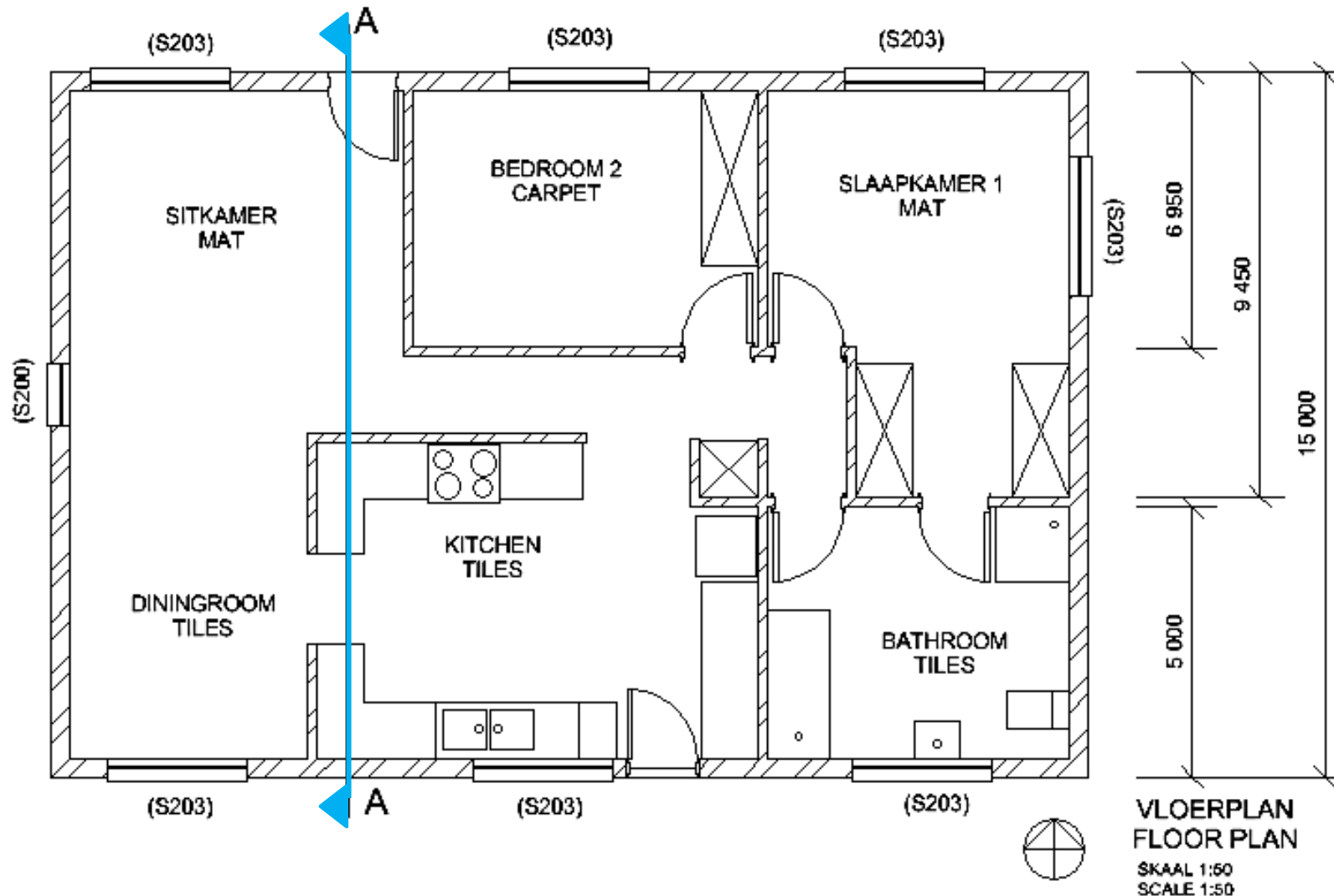


Scale 1:40



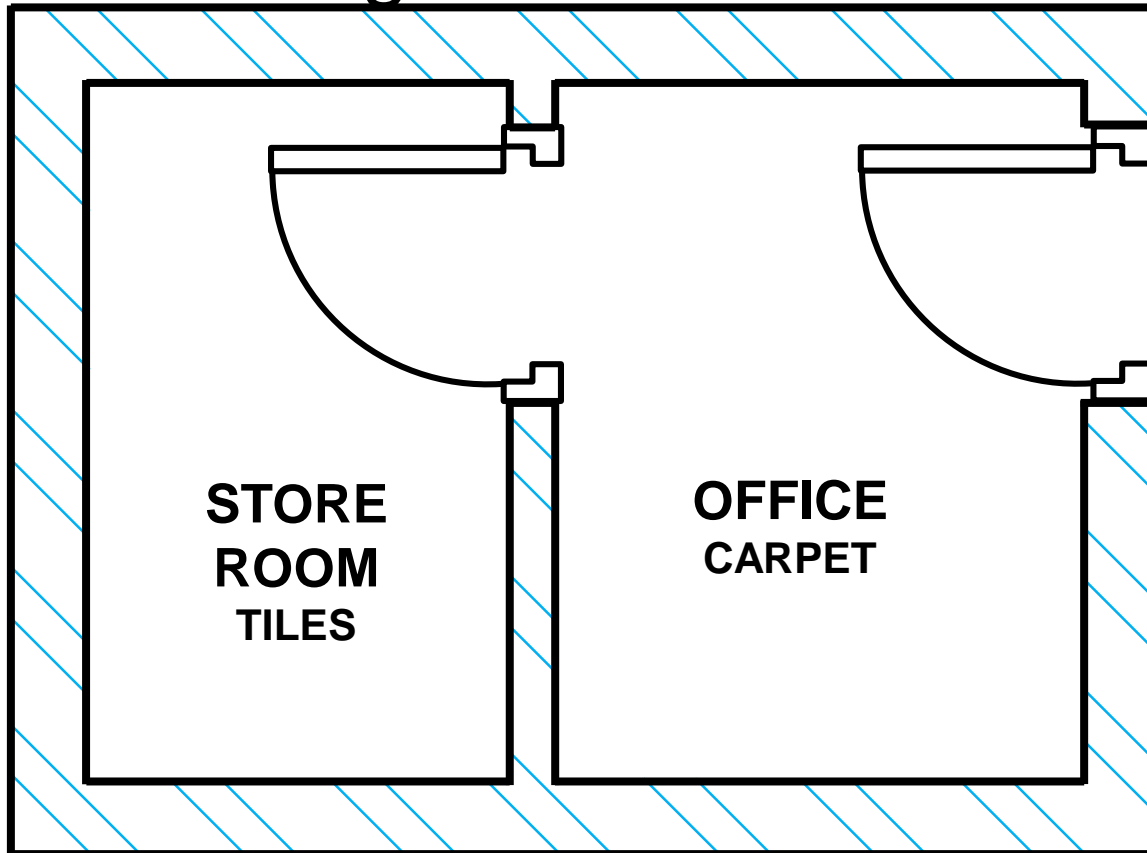
# FLOOR PLAN

- The windows of a house



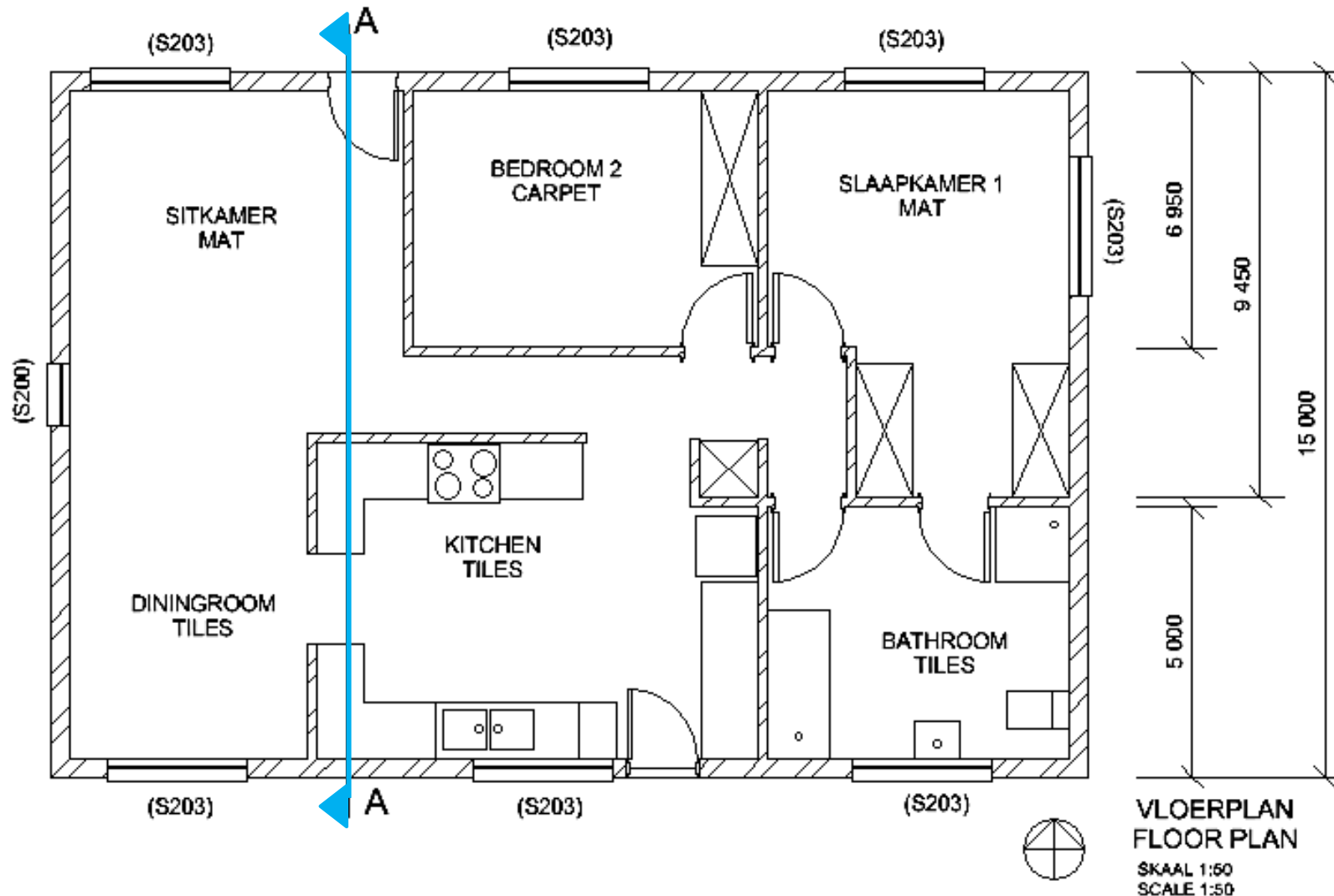
# FLOOR PLAN

- Label room designations & floor coverage



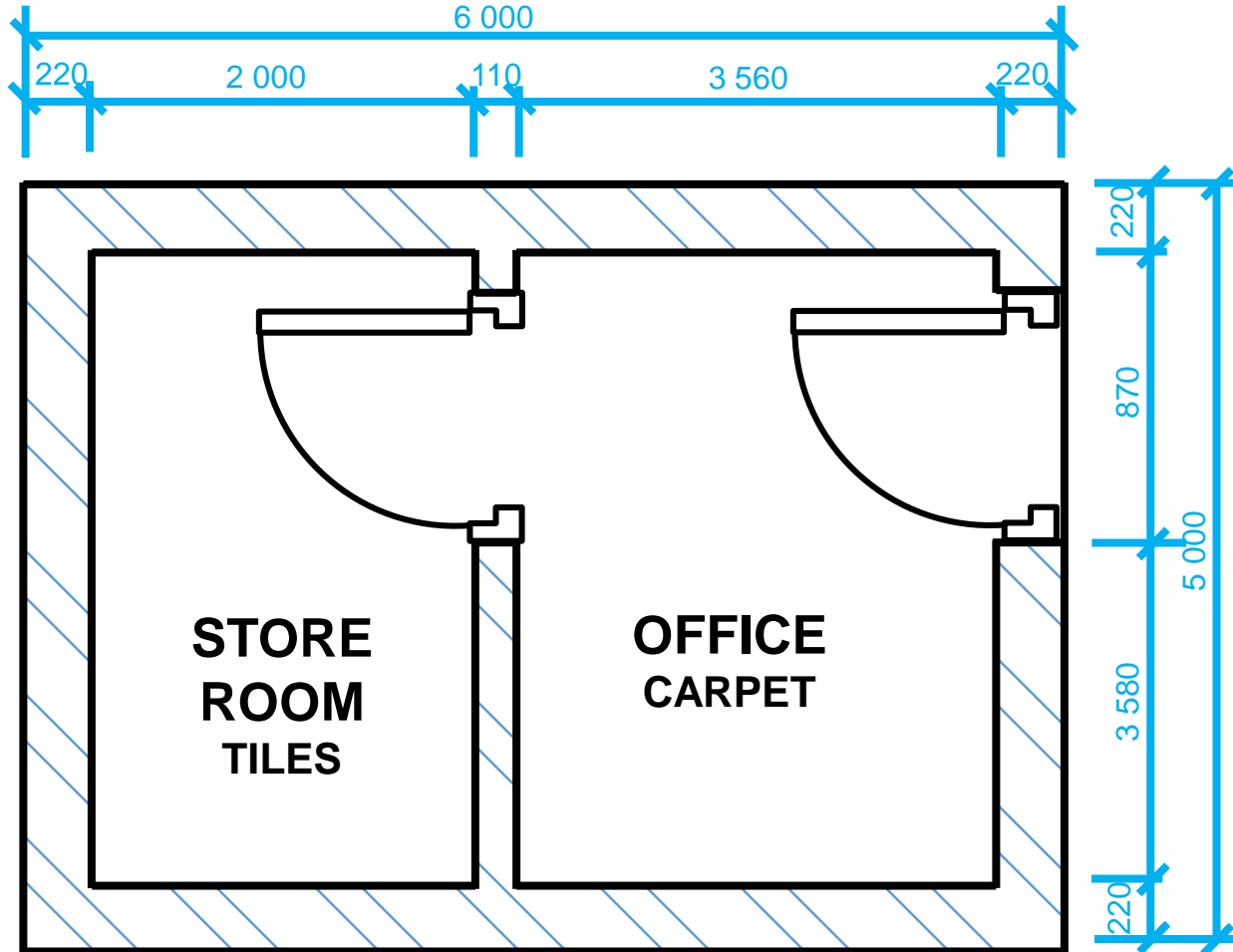
# FLOOR PLAN

- Label room designations & floor coverage



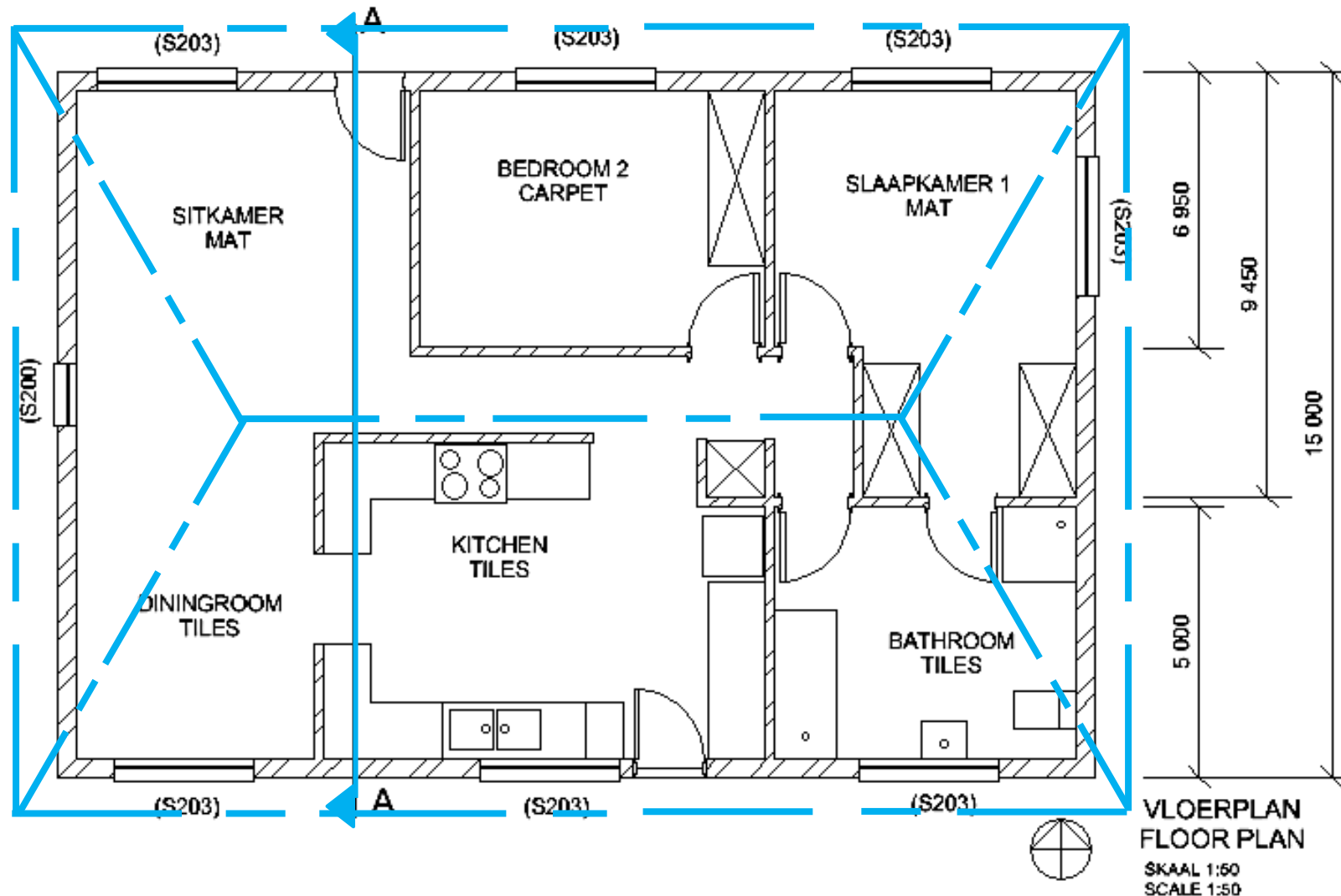
# FLOOR PLAN

## ■ Dimensions



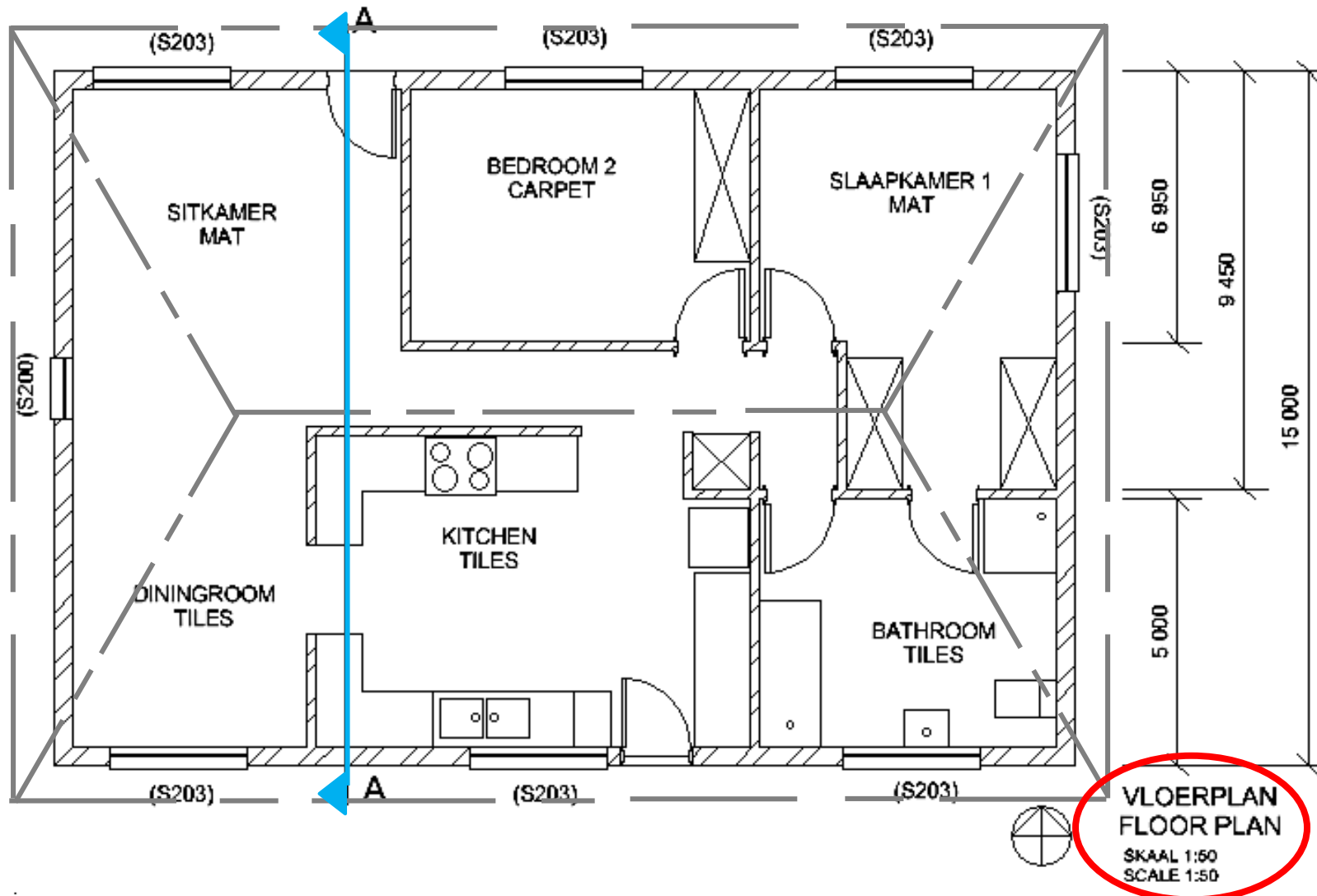
# FLOOR PLAN

- The roof line



# FLOOR PLAN

- The scale of the drawing



# FLOOR PLAN

- The North arrow of the drawing

