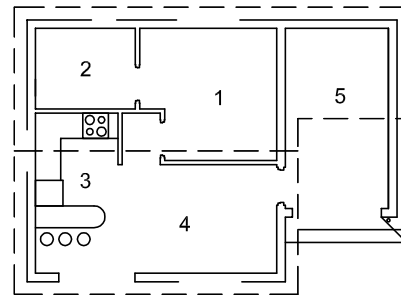


INCOMPLETE SOUTH ELEVATION



ROOM DESIGNATIONS

ROOF COMPONENTS	
	300 x 75 mm BARGE BOARD
	220 x 20 mm FASCIA BOARD

ELECTRICAL SYMBOLS	

FLOOR FINISHES

1 BEDROOM:	CARPET
2 BATHROOM:	TILE
3 KITCHEN:	TILE
4 LOUNGE/DINING ROOM:	WOOD
5 GARAGE:	GRANO

QUESTION 4: CIVIL DRAWING

Given:

- The incomplete south elevation of a **new house**, showing the walls, the door, window and garage openings, the roof and notes
- The incomplete floor plan showing the walls, positions of the doors, windows, fixtures and the electrical layout
- A schematic diagram of a roof truss and roof notes
- The incomplete foundation and external wall details of the living areas and the garage
- Room designations and floor finishes
- The rainwater down-pipe
- A table of roof components
- A table of electrical symbols
- A door and window schedule
- A table of fixtures
- The incomplete floor plan of the **new house**, drawn to scale 1 : 50, and the incomplete foundation and the break line of the detailed section, drawn to scale 1 : 20, on page 6

Instructions:

Answer this question on page 6.

4.1 Using the given incomplete floor plan, draw, in first-angle orthographic projection and to scale 1 : 50, the following views of the **new house**:

4.1.1 THE COMPLETE FLOOR PLAN

Add the following features to the drawing:

- ALL doors and windows
- ALL fixtures as indicated by the abbreviations
- ALL electrical fittings as indicated by the numbers
- ALL hatching detail

4.1.2 THE COMPLETE SOUTH ELEVATION

Show the following features on the drawing:

- The outside walls, door and window details and the garage opening
- The roof detail, including the fascia boards, barge boards, gutters and rainwater down-pipes
- The finished floor level

4.2 Using the incomplete foundation and break line on page 6, draw, to **scale 1 : 20**, a **DETAILED SECTION** on cutting plane A-A of the area in the ellipse shown on the incomplete floor plan.

Show the following features on the drawing:

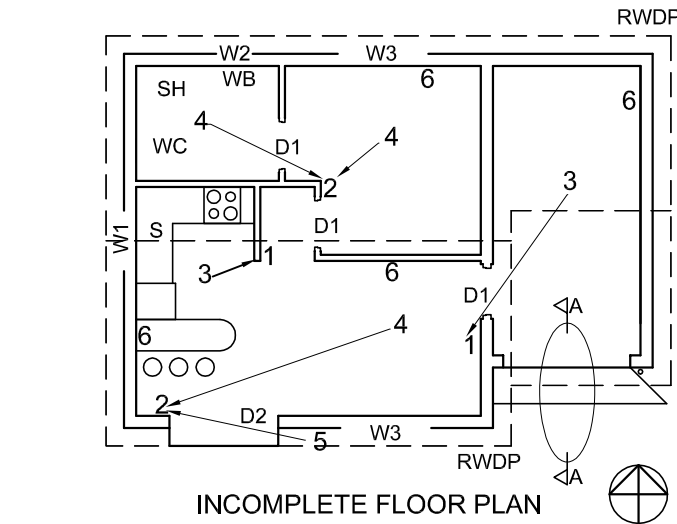
- The foundation, wall and garage opening detail
- The roof detail, including the fascia board and gutter
- ALL the external features of the **new house** to the left (west) of the ellipse
- ALL hatching detail. ONLY the substructure hatching may be drawn in neat freehand.

Label the following:

- The south elevation
- The room designations and floor finishes
- Ground level (use the correct abbreviation and show it on ALL the relevant views)

NOTE:

ALL drawings must comply with the **guidelines** and **graphical symbols** contained in the **SANS 10143**. [93]



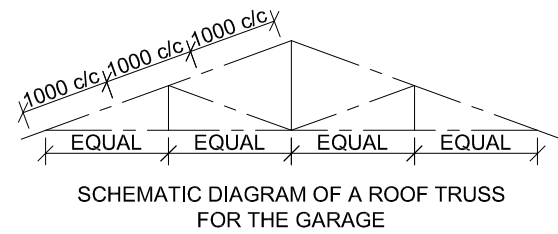
INCOMPLETE FLOOR PLAN

- FEATURES**
- D1 DOOR
 - D2 SLIDING DOOR
 - W1 WINDOW
 - W2 WINDOW
 - W3 WINDOW

- FIXTURES**
- WC TOILET
 - WB WASH BASIN
 - SH SHOWER
 - S SINK

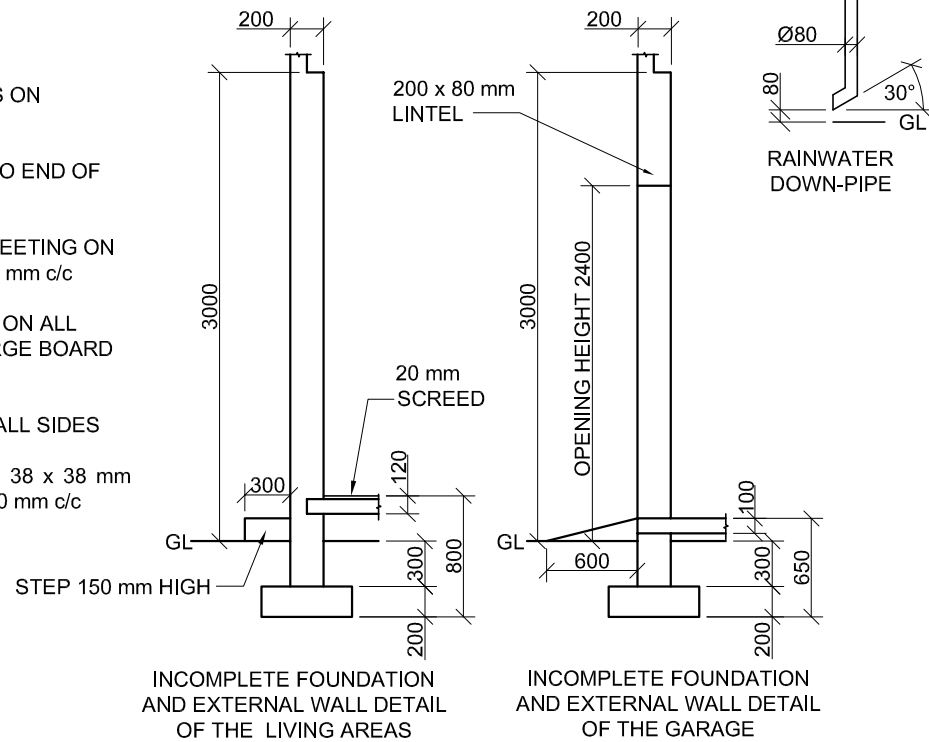
- ELECTRICAL FITTINGS**
- ONE-WAY SWITCH - SINGLE-POLE
 - ONE-WAY SWITCH - DOUBLE-POLE
 - FLUORESCENT LIGHT 2 x 40 W
 - CEILING LIGHT
 - WALL-MOUNTED LIGHT
 - SWITCHED SOCKET OUTLET

NOTE:
THE ARROW SHOWS THE LIGHT CONNECTION TO THE SWITCH.



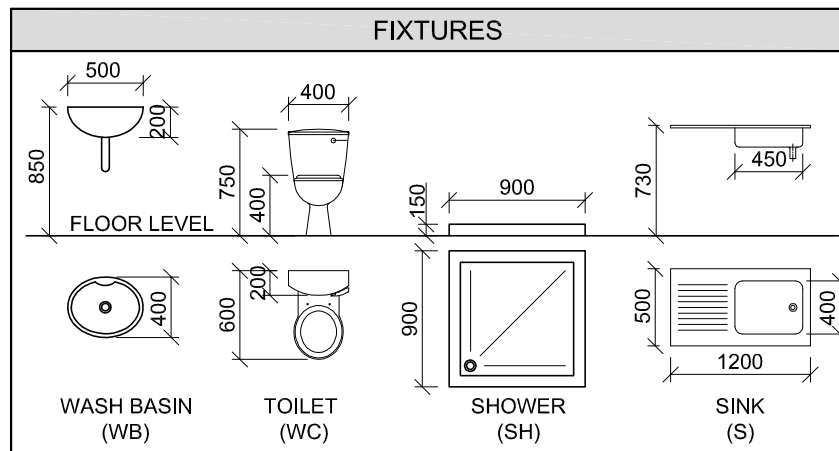
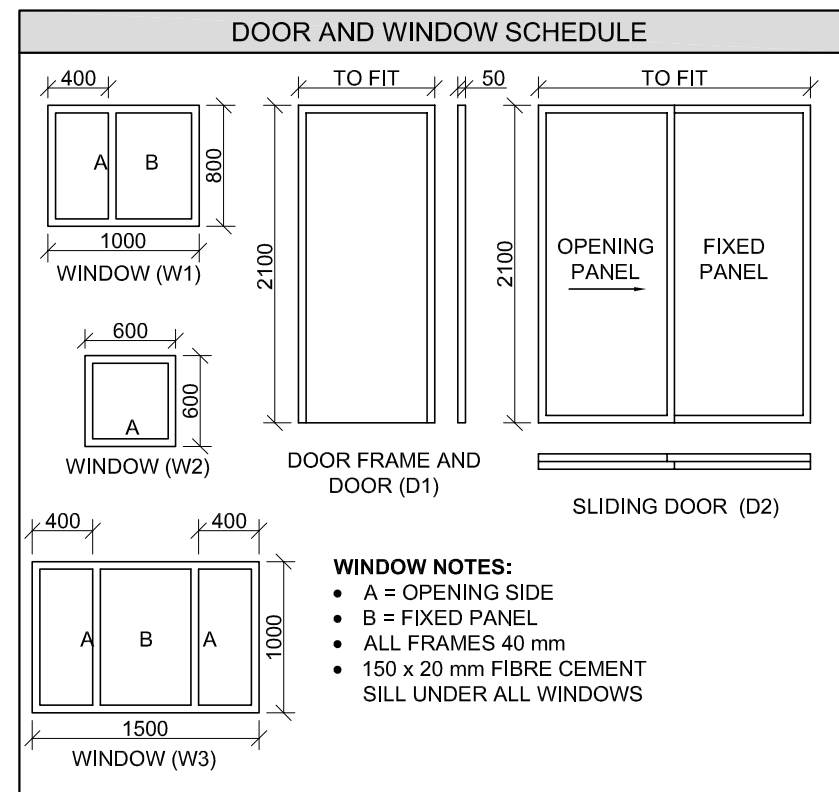
ROOF NOTES:

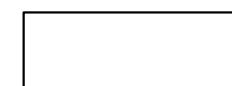
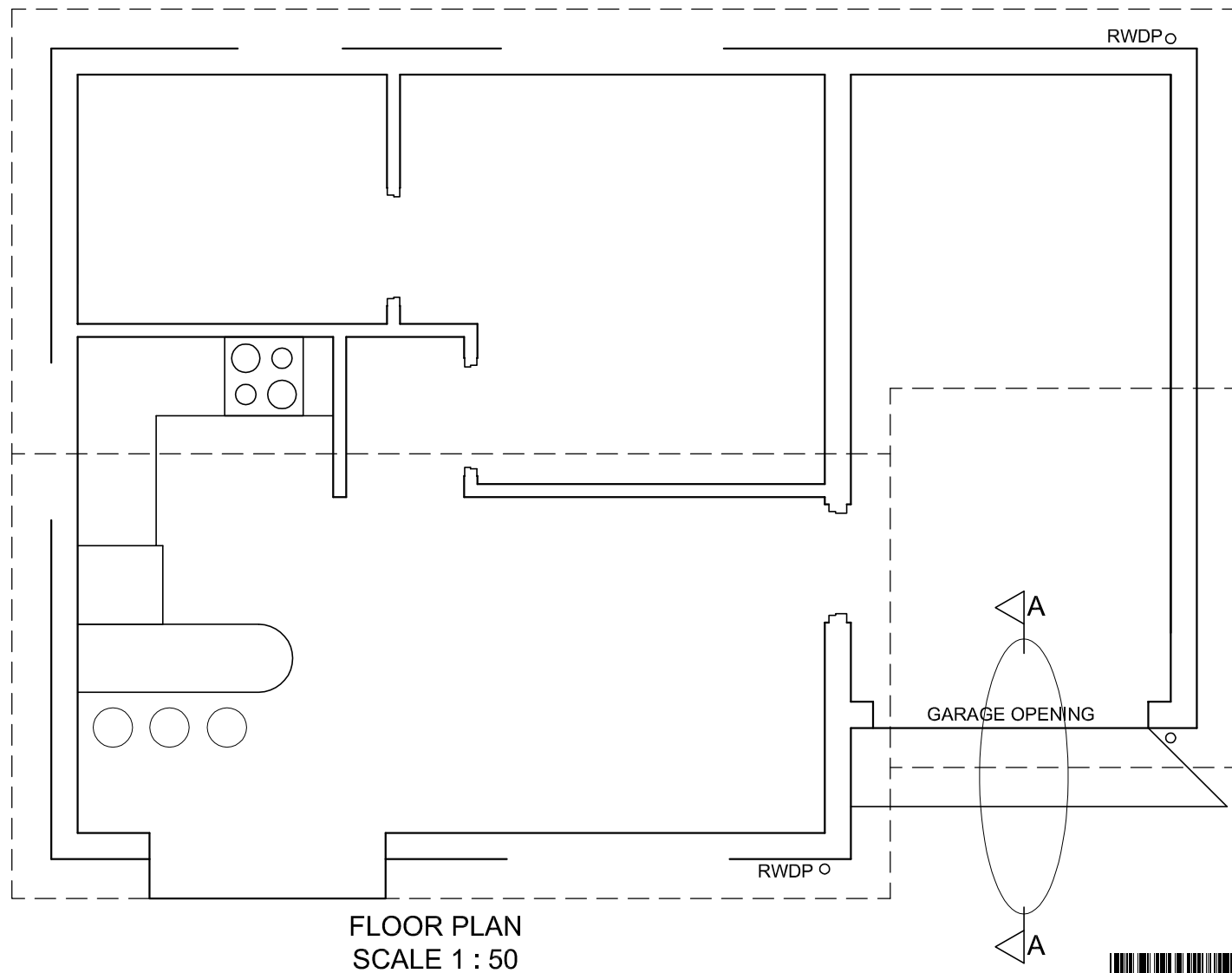
- ROOF PITCH 20°
- 115 x 38 mm ROOF TRUSSES ON 115 x 38 mm WALL PLATES
- ROOF OVERHANG 300 mm TO END OF ROOF TRUSSES
- ROOF COVER 40 mm IBR SHEETING ON 75 x 50 mm PURLINS @ 1000 mm c/c
- 220 x 20 mm FASCIA BOARD ON ALL SIDES AND 300 x 75 mm BARGE BOARD ON GABLED ENDS
- 100 x 150 mm GUTTERS ON ALL SIDES
- 9 mm CEILING BOARDS ON 38 x 38 mm BRANDING STRIPS @ 300 mm c/c



INCOMPLETE FOUNDATION AND EXTERNAL WALL DETAIL OF THE LIVING AREAS

INCOMPLETE FOUNDATION AND EXTERNAL WALL DETAIL OF THE GARAGE





SECTION A-A
SCALE 1 : 20

1. MARK ALLOCATION FOR SECTION OF ROOF		FOR OFFICIAL USE ONLY	
A (1)		INCORRECT SCALE	
B (1)		INCORRECT POSITIONING OF VIEWS	
C (1)		NON-ALIGNMENT OF VIEWS	
D (2)			
E (1)			
F (1)			
G (1)			
H (1)			
I (2)			
TOTAL		TOTAL	

ASSESSMENT CRITERIA				
FLOOR PLAN				
1	DOORS + WINDOWS	14		
2	ELECTRICAL	11		
3	FIXTURES	8		
4	HATCHING	4		
5	LABELS	5		
SUBTOTAL		42		
SOUTH ELEVATION				
1	ROOF	5 1/2		
2	WALLS + RWDP + FFL	7		
3	DOOR + WINDOW	10		
4	LABELS	1		
SUBTOTAL		23 1/2		
DETAILED SECTION				
1	ROOF	11		
2	FOUNDATION + WALLS + SLAB	7		
3	GUTTER + RWDP	4		
4	HATCHING	5		
5	LABELS	1/2		
SUBTOTAL		27 1/2		
TOTAL		93		
PENALTIES (-)				
GRAND TOTAL				
EXAMINATION NUMBER				
EXAMINATION NUMBER				6

