

STAPEL

QUESTION 3: PERSPECTIVE

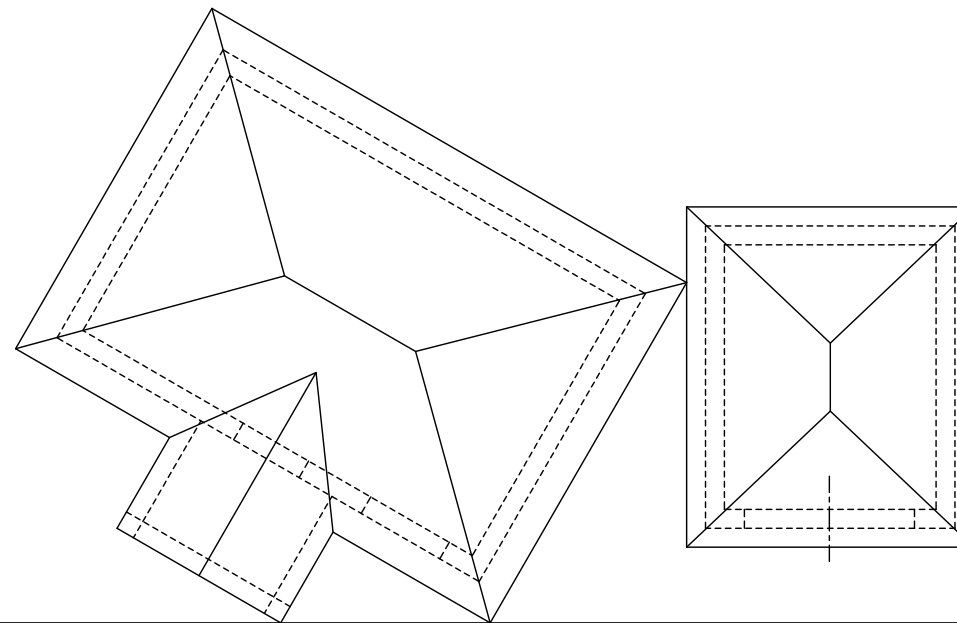
Given:

Three views of a dwelling with a garage and the information needed to draw a one-point-perspective and two-point-perspective drawing

- PP - Picture plane
- HL - Horizon line
- GL - Ground Line
- SP - Station point

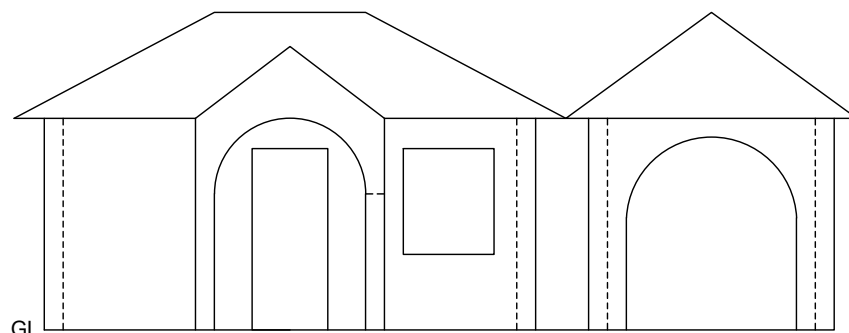
Instructions:

1. Locate and label the vanishing points.
2. Show ALL necessary constructions.
3. Show the wall thickness at the door and windows.
4. NO hidden detail is required.



PV

HL



GL



ASSESSMENT CRITERIA				
1	CIRCLE	8		
2	2-P-P ROOF	8		
3	1-P-P ROOF	4		
4	2-P-P WALLS	10		
5	1-P-P WALS	5		
6	1-P-P ARCH	5		
TOTAL		40		



PERSPECTIVE DRAWING

ESTIMATED TIME FOR COMPLETION 35 MIN
YOUR TIME FOR COMPLETION MIN

35 MIN
MIN

GRADE

INITIALS & SURNAME

TASK
6.1

PAGE
14