

QUESTION 3: PERSPECTIVE

Given:

Three views of a shelter with a viewing deck and the information needed to draw a two-point perspective drawing

PP – Picture plane

HL – Horizon line

GL – Ground line

SP – Station point

Instructions:

Complete the perspective drawing.

- Align the drawing sheet with the ground line (GL).
- Determine and label the vanishing points.
- Show ALL necessary construction.
- NO hidden detail is required. **[40]**

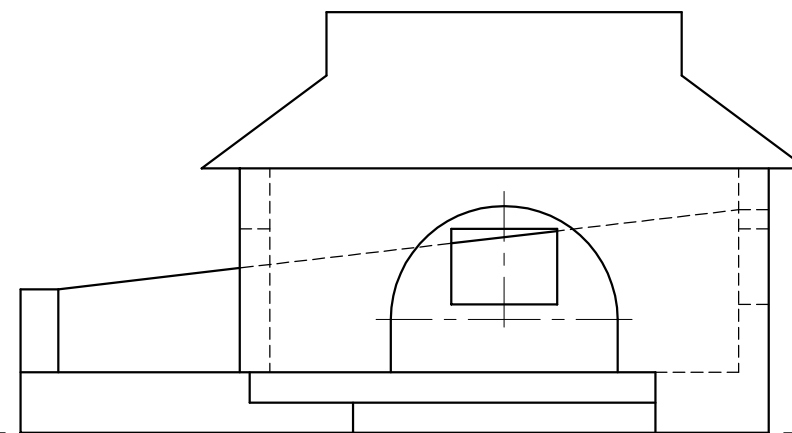
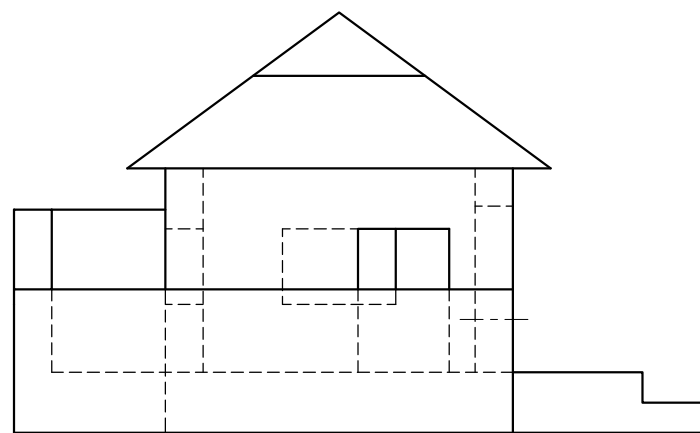
PP

PP

HL

HL

GL



SP

ASSESSMENT CRITERIA			
1	CONSTRUCTION + VPs	7	
2	WALLS + DOORS	22	
3	ROOF	5	
4	CIRCULAR ARC	6	
TOTAL		40	
EXAMINATION NUMBER			
EXAMINATION NUMBER			
EXAMINATION NUMBER			4

