

STAPEL

QUESTION 3: ISOMETRIC DRAWING

Given:

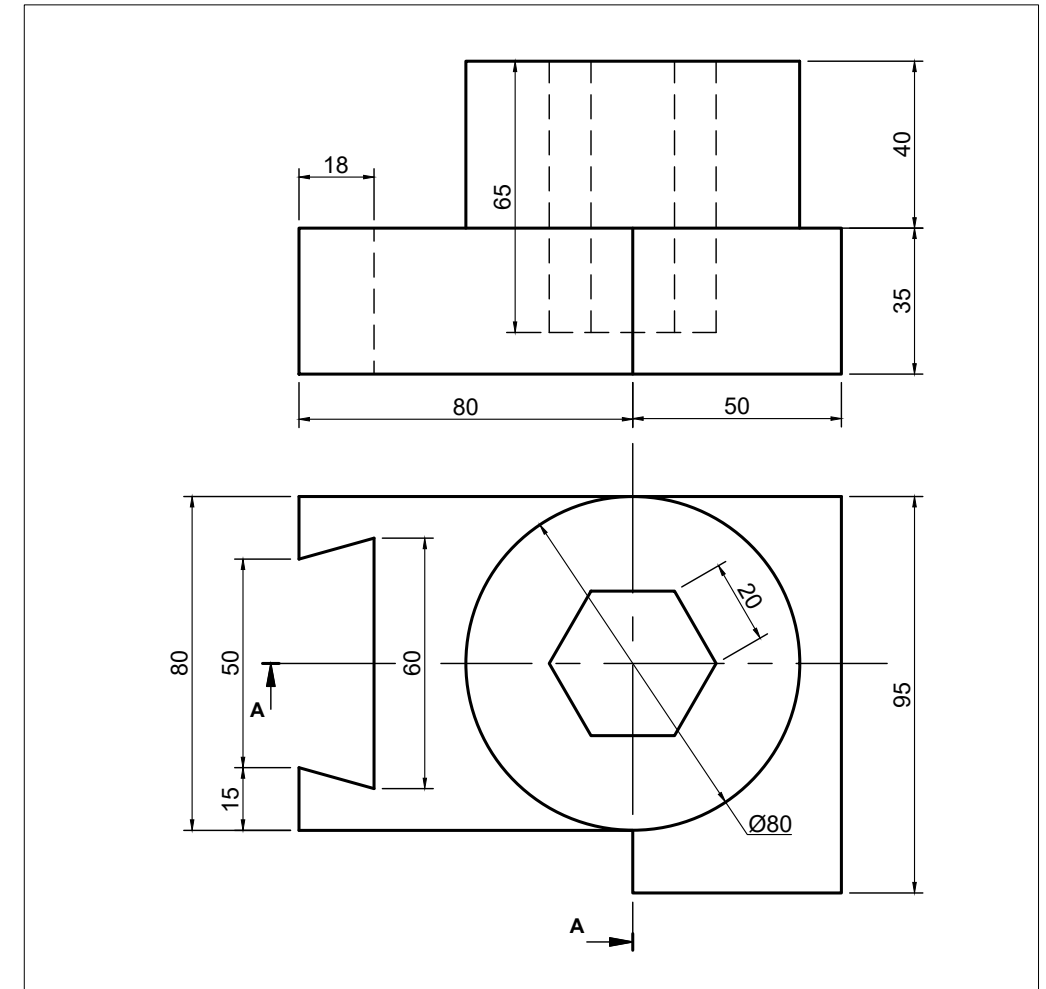
The figure below shows two orthographic views of a casting.
The position of point S on page 22.

Instructions:

Use a scale of 1:1 to convert the orthographic view of the casting into a sectional isometric drawing on cutting plane A-A.

- Make S the lowest point of the drawing.
- Show ALL necessary constructions.
- NO hidden detail is required.

[46]



↓
S



ASSESSMENT CRITERIA			
1	BASE ($\frac{30}{2}$)	15	
2	ISOMETRIC CIRCLE ($\frac{20}{2}$)	10	
3	AUXILIARY VIEW (6)	6	
4	HEXAGON	13	
5	HATCHING ($\frac{4}{2}$)	2	
6	PLACEMENT WRONG MAX -2		
TOTAL		46	

ISOMETRIC DRAWING	ESTIMATED TIME FOR COMPLETION	40 MIN	GRADE	INITIALS & SURNAME		TASK	PAGE
	YOUR TIME FOR COMPLETION	MIN					